

Because life is

Petty<sup>TM</sup>  
Real

3 Carr Road  
Colne  
BB8 9LL



For Sale

£200,000

- Spacious extended semi detached property
- Popular location
- Ideal for a family
- Hallway & utility
- Lounge
- Dining kitchen
- Conservatory
- Four bedrooms
- Bathroom
- Driveway & garage



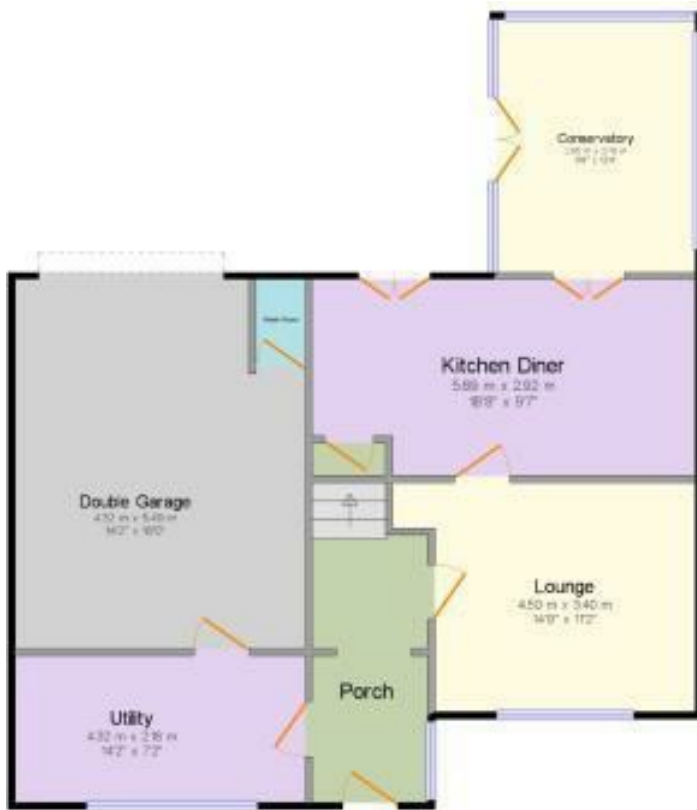
This spacious four-bedroom family home offers expansive living spaces, showcasing an array of appealing features that truly necessitate an in-person viewing to fully appreciate the quality and expansiveness of the accommodations on offer.

The home unfolds with an inviting porch leading into a welcoming hall, flowing into a cozy lounge and a sunlit conservatory. At its heart, a contemporary kitchen diner awaits, equipped with an extensive range of wall & base units and appliances, complemented by a practical utility room. The integrated garage includes a convenient washroom, adding to the thoughtful layout.

Upstairs, four generously sized bedrooms provide ample space for family and guests alike, alongside a well-appointed family bathroom.

The property is framed by a meticulously maintained front garden with secure gated access, while the rear unveils a private Indian stone paved patio, ideal for outdoor entertaining, a driveway, and additional parking space for up to three vehicles.

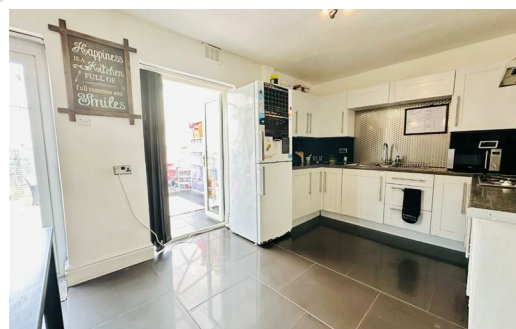
Strategically positioned to offer easy access to major transport links, this home is also within close proximity to sought-after schools and a variety of local amenities, making it an ideal setting for both convenience and quality of life.



Ground Floor



1st Floor



These particulars, whilst believed to be accurate are set out as a general outline only for guidance and do not constitute any part of an offer or contract. Intending purchasers should not rely on them as statements of representation of fact, but must satisfy themselves by inspection or otherwise as to their accuracy. No person in this firm's employment has the authority to make or give any representation or warranty in respect of the property.