

Because life is

PettyTM
Real

Ashdown Church Meadows
Barrowford
BB9 6QS



For Sale

£314,995

- New Development
- Sought After Location
- Built in Natural Stone & Slate Tiles
- 3 Bedrooms
- En-Suite to Master Bedroom

- Fitted Wardrobes to Master Bedroom
- Downstairs WC & Utility
- Solar Panels
- EV Car Charger
- 10-Year NHBC Warranty



MILLRIGG SHOW HOME NOW OPEN!

Plot 65 - Ashdown

INCLUDES UPGRADES AND A FLOORING PACKAGE!

Discover modern living at its finest in this beautifully designed three-bedroom end mews property, part of an exciting new development in the desirable village of Barrowford, brought to you by McDermott Homes.

The Ashdown is perfect for families, first-time buyers, or downsizers alike, this thoughtfully laid-out home offers a welcoming lounge ideal for relaxing or entertaining, along with a convenient downstairs WC. To the rear, the spacious kitchen diner features contemporary units and ample space for dining, flowing through to a separate utility room, ideal for laundry and additional storage.

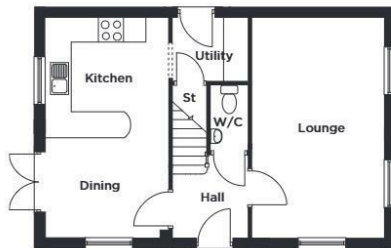
Upstairs, the main bedroom features a private en-suite shower room, while two further bedrooms provide flexibility for family, guests, or a home office. A modern family bathroom completes the first floor.

Externally the property boasts private parking and a South West facing rear garden.

Built to McDermott Homes' high standards, this property combines stylish design with quality finishes and energy efficiency – all in a sought-after location just moments from local amenities, scenic countryside, and excellent transport links.

THE ASHDOWN

3 Bedroom Detached / Mews Home



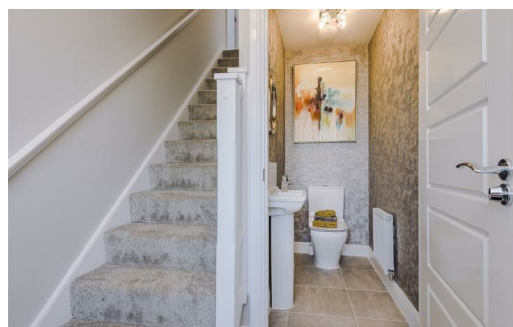
GROUND FLOOR

LOUNGE	3.16m x 5.36m	10'4" x 17'7"
KITCHEN/DINING	2.95m x 5.36m	9'8" x 17'7"
UTILITY	1.87m x 1.53m	6'2" x 5'0"
W/C	0.95m x 1.62m	3'1" x 5'4"

FIRST FLOOR

BEDROOM 1	3.01m x 3.74m	9'10" x 12'3"
EN-SUITE	3.01m x 1.53m	9'10" x 5'0"
BEDROOM 2	3.15m x 3.06m	10'4" x 10'0"
BEDROOM 3	3.15m x 2.21m	10'4" x 7'3"
BATH	1.94m x 1.70m	6'5" x 5'7"

Please note: All sizes shown are Maximum room dimensions and exclude wardrobes



These particulars, whilst believed to be accurate are set out as a general outline only for guidance and do not constitute any part of an offer or contract. Intending purchasers should not rely on them as statements of representation of fact, but must satisfy themselves by inspection or otherwise as to their accuracy. No person in this firm's employment has the authority to make or give any representation or warranty in respect of the property.

11 Albert Road, Colne, Lancashire, BB8 0RY
T. 01282 615900
Barrowford.sales@pettyreal.co.uk

www.pettyreal.co.uk