

Because life is

PettyTM
Real

9 The Mansion
Alma Road
Colne
BB8 7JG



For Sale

£135,000

- Penthouse 2nd floor apartment
- Prime residential location near to amenities
- Entrance hallway
- Lounge
- Fitted kitchen

- Three piece bathroom
- Two bedrooms
- Communal gardens & parking
- No chain
- Viewing recommended

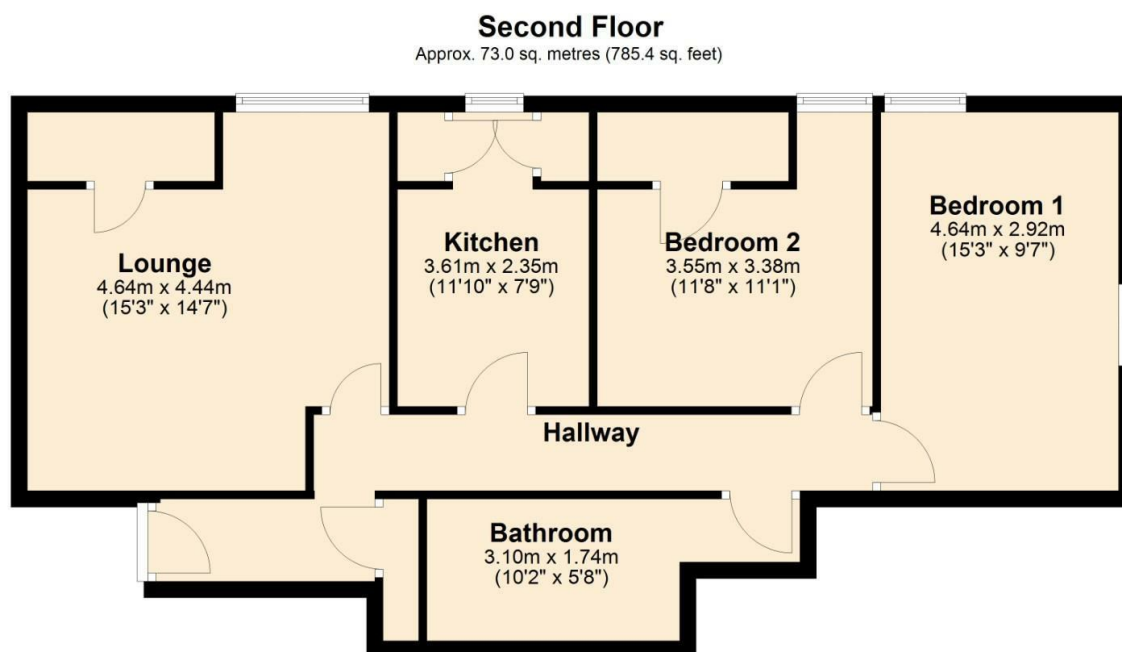


Situated within the prestigious Mansion on Alma Road, Colne, this well-proportioned second-floor penthouse apartment presents an excellent opportunity to acquire a home in an exclusive residential complex. Once part of the historic Hartley Hospital, the development offers character and charm while catering to modern living. The apartment is particularly well-suited for those looking to downsize, offering manageable yet spacious accommodation in a peaceful setting.

The property features a well-planned layout with a comfortable living area, a well-appointed kitchen, and generously sized bedrooms. The design ensures a bright and airy feel, providing a welcoming environment. Residents also benefit from well-maintained communal areas and designated parking, adding to the convenience of this desirable home.

Located within easy reach of Colne and surrounding towns, the apartment enjoys excellent transport links and proximity to local amenities, including shops, restaurants, and healthcare facilities. With its combination of character, practicality, and a sought-after location, this apartment is an ideal choice for those seeking a low-maintenance, comfortable home within a well-regarded development.

No onward chain.



Total area: approx. 73.0 sq. metres (785.4 sq. feet)

All floorplans provided by Petty Real are for guidance only. Please check all dimensions before making any decisions reliant upon them.
Plan produced using PlanUp.



These particulars, whilst believed to be accurate are set out as a general outline only for guidance and do not constitute any part of an offer or contract. Intending purchasers should not rely on them as statements of representation of fact, but must satisfy themselves by inspection or otherwise as to their accuracy. No person in this firm's employment has the authority to make or give any representation or warranty in respect of the property.

11 Albert Road, Colne, Lancashire, BB8 0RY
T. 01282 868686
Colne.sales@pettyreal.co.uk

www.pettyreal.co.uk