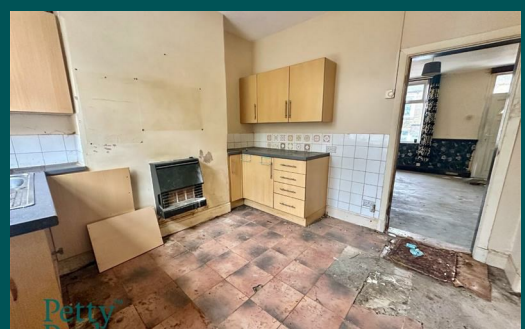


Because life is

PettyTM
Real

15 Salisbury Street
Colne
BB8 9JG



For Sale

- End-terrace
- In need of refurbishment/cash buyers only
- Popular location
- Lounge
- Fitted kitchen

Offers Over £50,000

- Two bedroom plus box room
- Three-piece shower room
- Rear yard
- Ideal for a landlord
- No chain



CASH BUYERS ONLY

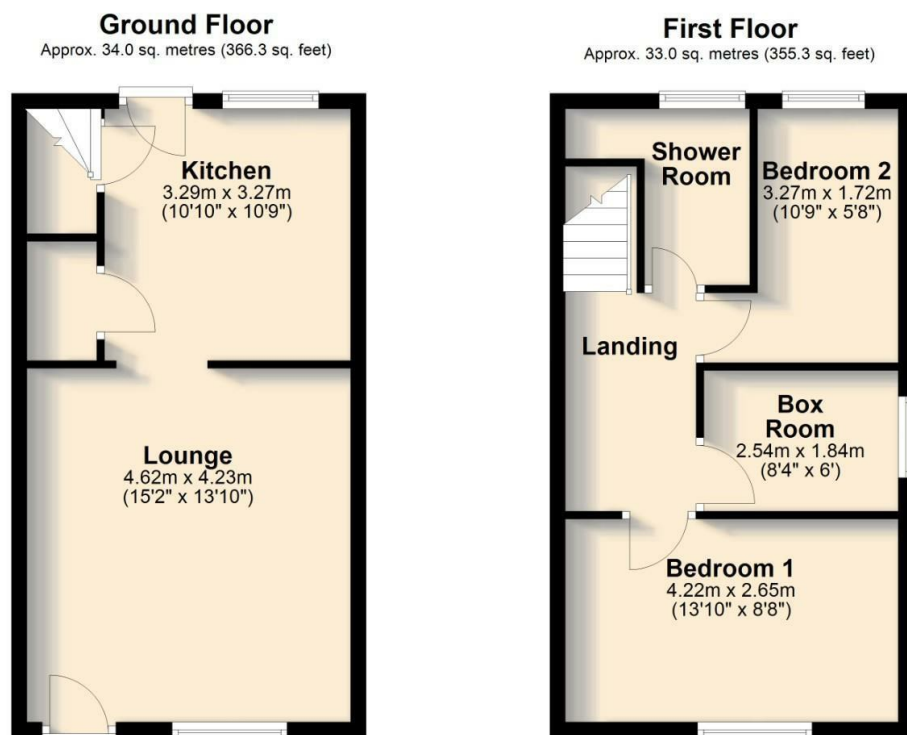
Situated on Salisbury Street in Colne, this property offers a promising investment opportunity or a blank canvas for new owners. The home features a cosy lounge, which provides a welcoming living space with ample natural light, perfect for relaxing or entertaining.

The fitted kitchen serves as a functional heart of the home, providing a base for meal preparation. While the property needs some refurbishment, the kitchen layout presents a great chance to design a space that suits your personal style and needs.

Upstairs, there are two bedrooms offering potential as comfortable sleeping spaces, with one smaller box room that could serve as a nursery, office, or additional storage area. The shower room completes the first floor and offers a convenient place to freshen up, though it may benefit from modern updates.

Outside, a rear yard provides an easily maintained outdoor space, ideal for small gatherings or a private retreat. Though the property requires some refurbishment, it offers the potential to create a charming home tailored to your vision. With thoughtful updates, this house can become a standout residence in a sought-after area of Colne.

No chain.



Total area: approx. 67.0 sq. metres (721.6 sq. feet)

All floorplans provided by Petty Real are for guidance only. Please check all dimensions before making any decisions reliant upon them.
Plan produced using PlanUp.



These particulars, whilst believed to be accurate are set out as a general outline only for guidance and do not constitute any part of an offer or contract. Intending purchasers should not rely on them as statements of representation of fact, but must satisfy themselves by inspection or otherwise as to their accuracy. No person in this firm's employment has the authority to make or give any representation or warranty in respect of the property.

11 Albert Road, Colne, Lancashire, BB8 0RY
T. 01282 868686
Colne.sales@pettyreal.co.uk

www.pettyreal.co.uk