

Because life is

PettyTM
Real

77 Marsden Hall Road North
Nelson
BB9 8JH



For Sale

Price £174,950

- Stunning semi detached dwelling
- Sought after location
- ideal for a family
- Entrance hall
- Lounge diner

- Recently installed modern kitchen
- Three bedrooms
- Contemporary bathroom
- Driveway & garage
- Gardens front & rear



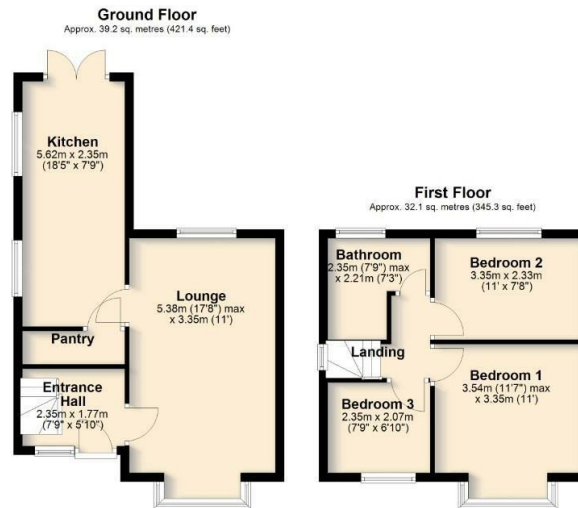
Situated in an established and sought-after area off Walton Lane, this stunning three-bedroom semi-detached home on Marsden Hall Road North, Nelson, is a perfect find for growing families. A short distance from local schools, Marsden Park, and the golf course.

The home is set on a generous plot with a large private garden to the rear, ideal for outdoor activities, gardening, or family gatherings. With a driveway and garage, parking and storage are convenient, making everyday life easier for busy families.

Inside, the house boasts a beautifully modern kitchen, equipped with sleek cabinetry and contemporary appliances, perfect for those who love to cook and entertain. The spacious dining area offers an inviting space for family meals and socializing, seamlessly connecting with the kitchen for a practical and open layout.

The modern bathroom has been tastefully renovated with stylish fixtures, while the three well-sized bedrooms offer ample natural light and flexibility for creating cozy retreats, a home office, or a playroom.

This mature semi-detached dwelling offers a perfect blend of modern living and convenience in a prime location, making it an ideal purchase for families seeking a comfortable and spacious home with plenty of amenities nearby.



Total area: approx. 71.2 sq. metres (766.8 sq. feet)
77 Marsden Hall Road, Nelson



These particulars, whilst believed to be accurate are set out as a general outline only for guidance and do not constitute any part of an offer or contract. Intending purchasers should not rely on them as statements of representation of fact, but must satisfy themselves by inspection or otherwise as to their accuracy. No person in this firm's employment has the authority to make or give any representation or warranty in respect of the property.

11 Albert Road, Colne, Lancashire, BB8 0RY
T. 01282 868686
Colne.sales@pettyreal.co.uk

www.pettyreal.co.uk