

Because life is

Petty<sup>TM</sup>  
Real

27 Aspinall Drive  
Colne  
BB8 8FF



## For Sale

Price £295,000

- Spacious executive detached dwelling
- Sought after location
- Ideal for a growing family
- Hallway and cloak room
- Spacious lounge

- Modern dining kitchen
- Four bedrooms
- Two ensembles
- House bathroom
- Garage, driveway and private garden



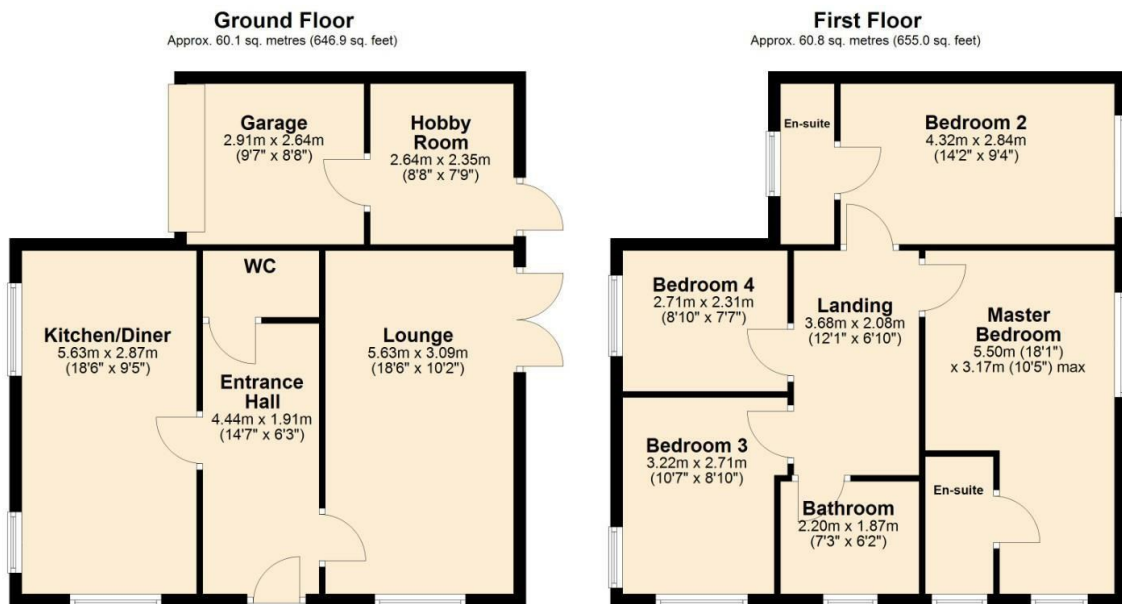
This executive four-bedroom detached home on Apsinall Drive, Colne, is an ideal choice for a family seeking a blend of comfort, style, and convenience. The property greets you with a spacious entrance hallway, setting a welcoming tone that leads to a convenient WC and a large, inviting lounge. The lounge provides the perfect space for relaxation and entertaining, with ample room for family gatherings or quiet evenings in.

At the heart of the home is a fully fitted modern kitchen, thoughtfully designed with both functionality and aesthetics in mind. It offers generous space for cooking and dining, making it an ideal setting for preparing meals and enjoying family dinners together.

Upstairs, the home continues to impress with four well-proportioned bedrooms, offering plenty of space for a growing family or accommodating guests. Two of the bedrooms feature en-suite bathrooms, adding a touch of luxury and ensuring privacy for family members or visitors. The remaining two bedrooms share access to a stylishly appointed house bathroom, ensuring convenience for all.

The property's outdoor space includes a private rear garden, a peaceful retreat perfect for leisure activities, gardening, or alfresco dining during warmer months. A double driveway at the front of the house provides ample parking for multiple vehicles. Additionally, the garage has been partially converted into a versatile hobby room, offering a perfect space for creative projects, a home office, or a playroom, while still retaining some storage capacity.

Situated just a short distance from local amenities, schools, and transport links, this home is ideally located for a family looking for a modern, spacious living environment in a desirable location.



Total area: approx. 120.9 sq. metres (1301.9 sq. feet)



These particulars, whilst believed to be accurate are set out as a general outline only for guidance and do not constitute any part of an offer or contract. Intending purchasers should not rely on them as statements of representation of fact, but must satisfy themselves by inspection or otherwise as to their accuracy. No person in this firm's employment has the authority to make or give any representation or warranty in respect of the property.

11 Albert Road, Colne, Lancashire, BB8 0RY  
T. 01282 868686  
Colne.sales@pettyreal.co.uk

[www.pettyreal.co.uk](http://www.pettyreal.co.uk)