

Because life is

PettyTM
Real

3 Fern Street
Colne
BB8 0QY



For Sale

Price £150,000

- Spacious semi detached
- Ideal for a family
- Lounge
- Dining kitchen
- Cloak room

- Three bedrooms
- Bathroom
- Popular location
- Garden to the rear
- Garage & driveway



This spacious semi-detached house is located in a popular residential area, offering ideal family living accommodation spread over two well-arranged floors.

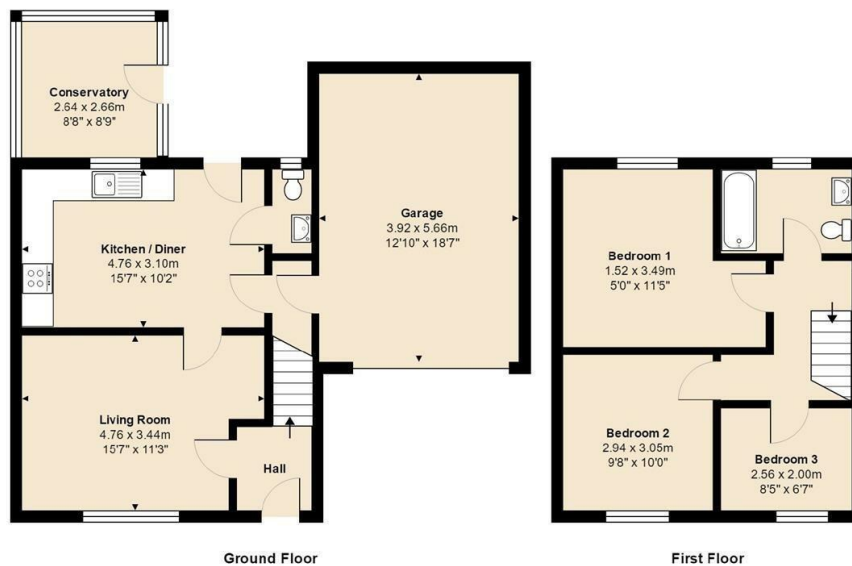
On the ground floor, the property features an inviting entrance hallway, accessed via a UPVC double glazed door, with stairs leading to the first floor. The lounge is generously sized and includes a cozy living flame gas fire with a stylish surround. The fully fitted dining kitchen is well-appointed with a range of wall and base units, complemented by modern work surfaces and splash-backs. It comes equipped with an integrated oven and grill, gas hob, dishwasher, and plumbing for an automatic washing machine, as well as a stainless steel sink unit. A UPVC double glazed door opens directly from the kitchen to the rear garden, adding convenience. Off the kitchen, there is a two-piece cloakroom with a WC and washbasin, as well as access to the attached garage. Additionally, the ground floor includes a UPVC double glazed conservatory, accessible from the outside.

The first floor features a landing area and a loft, accessed via a pull-down ladder. There are three well-proportioned bedrooms and a modern three-piece bathroom suite in white, which includes a bath, low-level WC, and pedestal washbasin.

Externally, the property sits on a generous plot with a driveway providing ample off-road parking and leading to an attached garage, alongside a garden area. The rear of the property boasts a sizable lawned garden, perfect for family activities and outdoor enjoyment.

Modern comforts include UPVC double glazing and gas-fired central heating. An early viewing is highly recommended to appreciate all this property has to offer.

3 Fern Street, Colne BB8 0QY



Total Area: 106.5 m² ... 1146 ft²

All measurements are approximate and for display purposes only



These particulars, whilst believed to be accurate are set out as a general outline only for guidance and do not constitute any part of an offer or contract. Intending purchasers should not rely on them as statements of representation of fact, but must satisfy themselves by inspection or otherwise as to their accuracy. No person in this firm's employment has the authority to make or give any representation or warranty in respect of the property.

11 Albert Road, Colne, Lancashire, BB8 0RY
T. 01282 868686
Colne.sales@pettyreal.co.uk

www.pettyreal.co.uk