

Because life is

PettyTM Real

14 Bamford Street
Nelson
BB9 0PA



For Sale

£110,000

- Good sized mid terrace
- Popular location
- Ideal for first time buyers
- Lounge
- Fitted dining kitchen

- Two double bedroom
- Modern three piece bathroom
- Year yard with outbuilding
- Central heating
- Double glazing

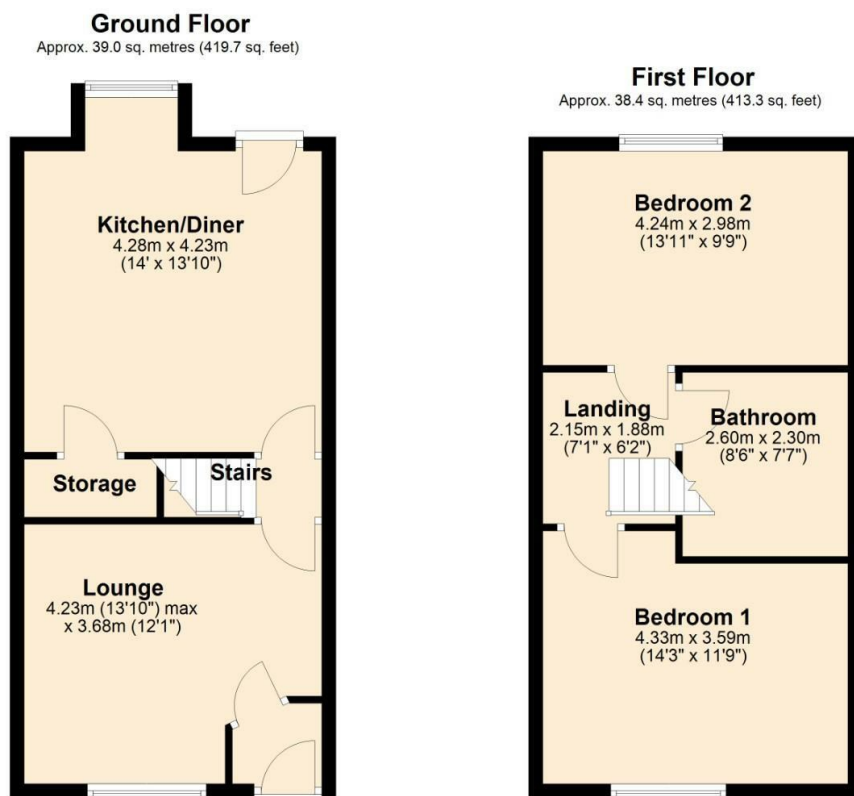


This modern mid-terrace home, recently re-roofed, is an excellent choice for first-time buyers seeking a move-in-ready property. The exterior updates ensure long-term durability and minimal maintenance, giving new homeowners peace of mind.

Inside, the property boasts a cosy lounge, perfect for relaxing after a long day. The fitted dining kitchen is a standout feature, offering ample space for both cooking and dining. With modern appliances and plenty of storage, it's well-suited for everyday living and entertaining guests. The layout is practical, making the most of the available space and providing a welcoming atmosphere.

Upstairs, you'll find two generously sized double bedrooms, offering plenty of room for sleep and storage. The modern three-piece bathroom is tastefully finished, featuring contemporary fixtures that add a touch of luxury.

Outside, the yard includes useful outbuildings, providing additional storage or potential for a workshop or utility space. This home offers a blend of modern living and practical features, making it an ideal choice for those looking to purchase their first property.



Total area: approx. 77.4 sq. metres (833.0 sq. feet)



These particulars, whilst believed to be accurate are set out as a general outline only for guidance and do not constitute any part of an offer or contract. Intending purchasers should not rely on them as statements of representation of fact, but must satisfy themselves by inspection or otherwise as to their accuracy. No person in this firm's employment has the authority to make or give any representation or warranty in respect of the property.

11 Albert Road, Colne, Lancashire, BB8 0RY
T. 01282 868686
Colne.sales@pettyreal.co.uk

www.pettyreal.co.uk