

Because life is

Petty<sup>TM</sup>  
Real

24 Portland Street  
Colne  
BB8 0LX



For Sale

Reduced To £84,950

- Spacious end terrace
- In need of refurbishment
- Popular location
- Ideal for a property developer
- Two reception rooms

- Separate kitchen
- Two double bedrooms
- Three piece bathroom
- GCH and UPVC double glazing
- Yard to the rear



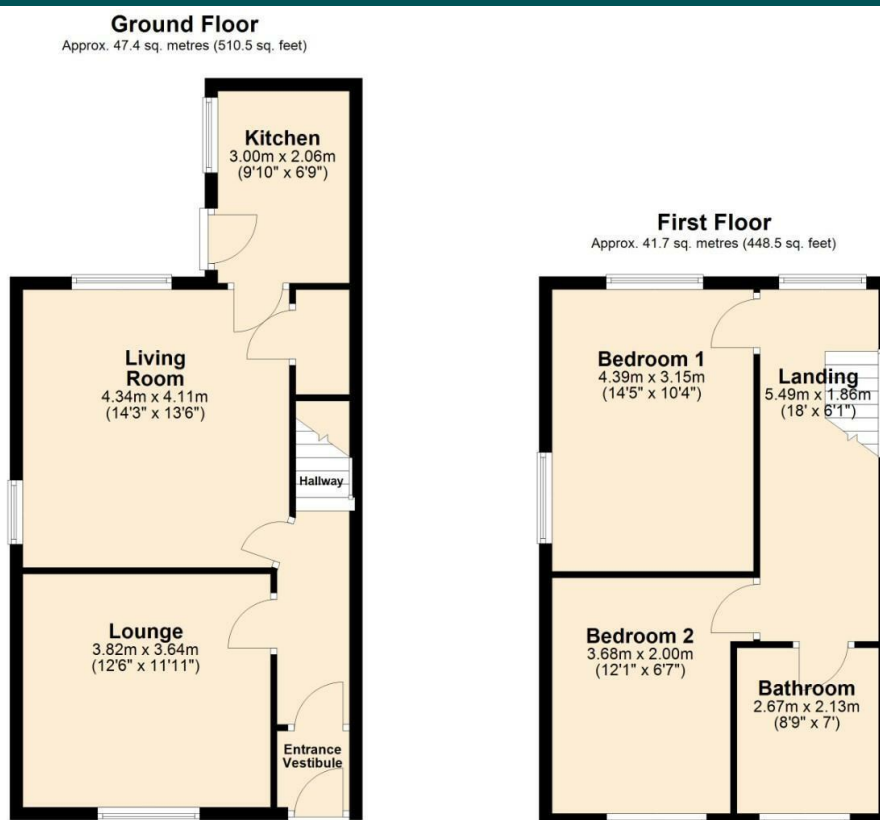


This spacious end-terrace property on Portland Street, Colne, presents an excellent refurbishment opportunity. Offering ample living space, the home features two generous reception rooms, perfect for family gatherings or entertaining guests. The kitchen, located at the rear, provides a functional layout but would benefit from modernisation to bring it up to contemporary standards.

Upstairs, there are two double bedrooms, both offering plenty of space for storage and personalisation. The bathroom is conveniently located on the same floor and could be transformed into a modern, stylish retreat with some updates.

The property includes a yard at the rear, ideal for outdoor activities or a small garden. Situated in a desirable location, the house is close to local amenities, schools, and transport links, making it an attractive option for families or investors. With no onward chain, this property is a blank canvas ready for new owners to add their personal touch and create a wonderful home.

The property has the benefit of double glazing and gas central heating.



Total area: approx. 89.1 sq. metres (959.0 sq. feet)



These particulars, whilst believed to be accurate are set out as a general outline only for guidance and do not constitute any part of an offer or contract. Intending purchasers should not rely on them as statements of representation of fact, but must satisfy themselves by inspection or otherwise as to their accuracy. No person in this firm's employment has the authority to make or give any representation or warranty in respect of the property.

11 Albert Road, Colne, Lancashire, BB8 0RY  
T. 01282 868686  
Colne.sales@pettyreal.co.uk

[www.pettyreal.co.uk](http://www.pettyreal.co.uk)