

Because life is

PettyTM
Real

15 Warwick Drive
Brierfield
BB9 0PP



For Sale

- Spacious semi detached property
- Sought after location
- Ideal for a family
- Entrance porch and hallway
- Lounge diner

Reduced To £169,950

- Fitted kitchen
- Conservatory
- Three bedrooms
- Three piece bathroom
- Gardens, garage and driveway



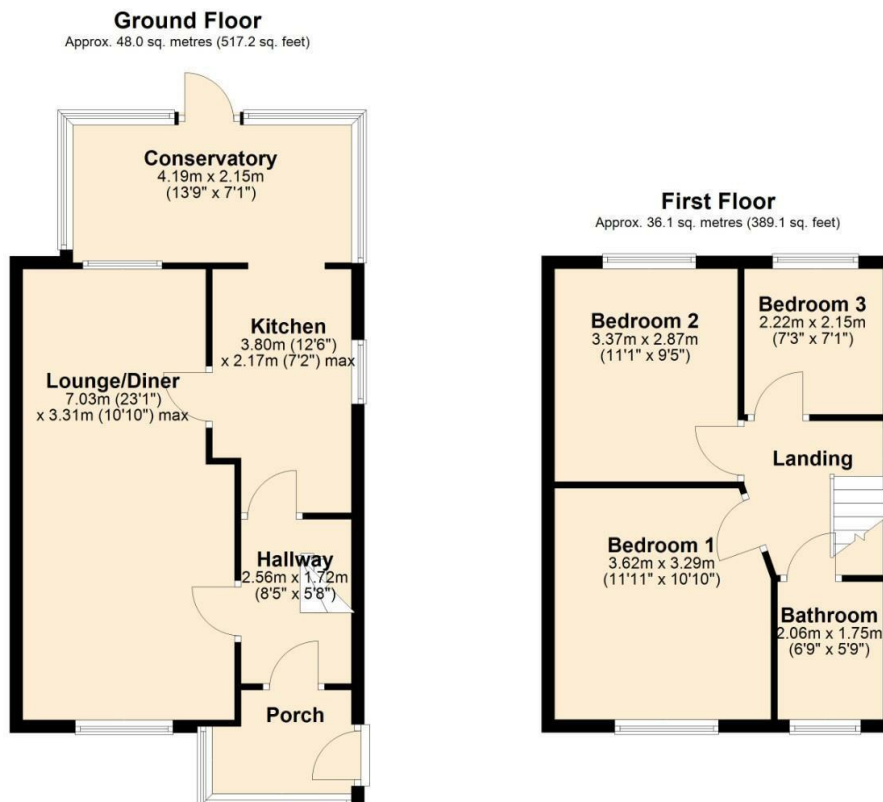
This beautifully presented three-bedroom semi-detached property on Warwick Drive, Brierfield, offers an ideal blend of modern living and comfort. Upon arrival, you're greeted by a welcoming entrance porch that leads into a bright and spacious hallway. The property features a generous lounge diner, a versatile space perfect for both relaxing and entertaining. The room is filled with natural light, creating a warm and inviting atmosphere, with ample space for both dining and living areas.

The separate modern kitchen is a standout feature, equipped with contemporary units, stylish countertops, and integrated appliances, providing plenty of storage and functionality. Adjacent to the kitchen is a delightful conservatory, offering additional living space that can be enjoyed all year round. This room overlooks and provides direct access to the rear garden, making it perfect for relaxing or dining while enjoying the garden view.

Upstairs, you'll find three well-proportioned bedrooms, each offering comfortable living space. The property also includes a sleek, modern bathroom, designed with high-quality fixtures and fittings, providing a luxurious touch.

Externally, the property boasts well-maintained gardens to both the front and rear. The rear garden is private and perfect for outdoor activities or simply unwinding. Additionally, the property benefits from a private driveway offering off-street parking, leading to a secure garage that provides further parking or storage options.

Located in a peaceful residential area, this property is close to local amenities, reputable schools, and excellent transport links, making it an ideal family home.



Total area: approx. 84.2 sq. metres (906.2 sq. feet)



These particulars, whilst believed to be accurate are set out as a general outline only for guidance and do not constitute any part of an offer or contract. Intending purchasers should not rely on them as statements of representation of fact, but must satisfy themselves by inspection or otherwise as to their accuracy. No person in this firm's employment has the authority to make or give any representation or warranty in respect of the property.