

Because life is

PettyTM
Real

1 Hollington Street
Colne
BB8 7BP



For Sale

- Spacious gable end terrace
- Sought after location
- Ideal for a family
- Two reception rooms
- Seperate fitted kitchen

Offers In The Region Of £200,000

- Three bedrooms
- Modern three piece shower room
- Boarded loft and Burglar alarm
- Year Yard with store room
- No chain



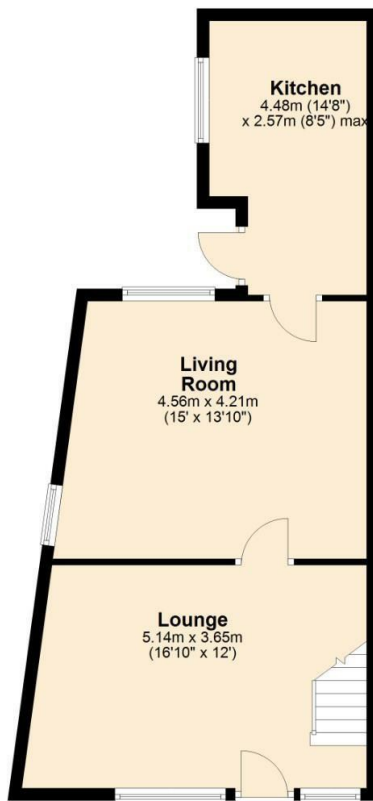
This beautifully presented three-bedroom end-terrace property is situated in a sought-after location off Cotton Tree Lane, Colne, making it an ideal home for a family. The property features a modern and spacious fitted kitchen, perfect for culinary enthusiasts, along with two inviting reception rooms that provide ample space for relaxation and entertainment.

The first floor boasts three well-proportioned bedrooms, ensuring comfortable living for all family members. A contemporary three-piece shower room adds to the property's modern appeal. Additionally, the loft has been boarded, offering valuable extra storage space or potential for other uses.

Externally, the property includes a well-maintained yard with an outside store, providing practical outdoor space for various needs. This home benefits from close proximity to local amenities, schools, and transport links, making daily life convenient and enjoyable. Don't miss this fantastic opportunity to acquire a charming family home in a prime location.

No chain.

Ground Floor
Approx. 51.2 sq. metres (551.6 sq. feet)



First Floor
Approx. 41.7 sq. metres (448.8 sq. feet)



These particulars, whilst believed to be accurate are set out as a general outline only for guidance and do not constitute any part of an offer or contract. Intending purchasers should not rely on them as statements of representation of fact, but must satisfy themselves by inspection or otherwise as to their accuracy. No person in this firm's employment has the authority to make or give any representation or warranty in respect of the property.

11 Albert Road, Colne, Lancashire, BB8 0RY
T. 01282 868686
Colne.sales@pettyreal.co.uk

www.pettyreal.co.uk