



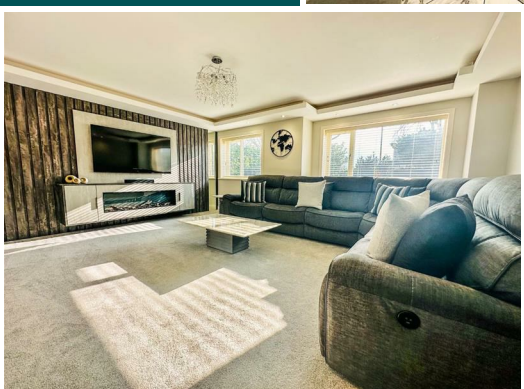
IMPORTANT: We would like to inform prospective purchasers that these sales particulars have been prepared as a general guide only. A detailed survey has not been carried out, nor the services, appliances and fittings tested. Room sizes should not be relied upon for furnishing purposes and are approximate. If floor plans are included, they are for guidance only and illustration purposes only and may not be to scale. If there are any important matters likely to affect your decision to buy, please contact us before viewing the property.

Total area: approx. 279.4 sq. metres (3007.5 sq. feet)



Because life is
Petty RealTM

Asking Price £699,950

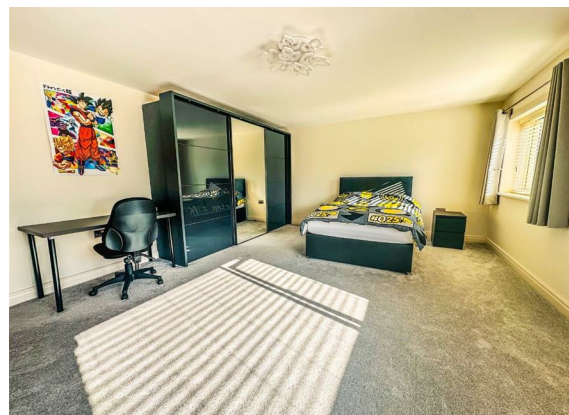
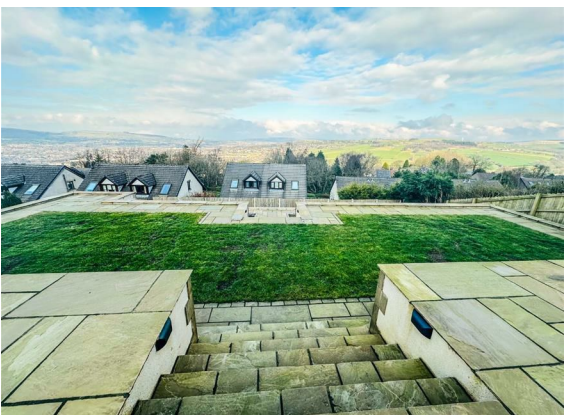


454 Kings Causeway

**Brierfield
BB9 0EU**

4 2 3 D

Council Tax Band: G



Spacious detached property in a sought after area on Kings Causeway ideal for a growing family.

Description

Nestled within an exclusive enclave coveted by discerning homeowners, this captivating detached residence embodies the pinnacle of contemporary luxury living. Its facade, a testament to architectural finesse, beckons with an aura of sophistication and prestige.

The property is within a short drive of amenities and schools as well yet be within a commutable distance of the major conurbations of the North West via the M65 motorway which is within ten minutes drive away.

Stepping across the threshold, a grand hallway extends a gracious welcome, setting the stage for the opulence that awaits within. The lounge, adorned with a mesmerizing feature media wall, serves as a sanctuary for indulgent relaxation and refined entertainment. Adjacent, the living room invites with its allure, boasting a remote-operated gas fire and seamless integration with the outdoors through bifold doors, an invitation to embrace the serenity of the meticulously landscaped rear garden.

The culinary aficionado is bestowed with a kitchen that transcends mere functionality, exuding a symphony of modernity and elegance. Equipped with state-of-the-art appliances and fine finishes, it promises to ignite culinary passions and foster culinary creativity. A dedicated utility room stands as a testament to practicality, ensuring seamless household management.

Ascending the staircase to the first floor, a palatial landing unveils the gateway to unparalleled comfort and luxury. The master bedroom, a haven of tranquility, beckons with French doors that open to unveil panoramic vistas. A walk-in wardrobe, resplendent in its organization and spaciousness, offers a haven for sartorial indulgence. Stunning three-piece bathroom is adorned with lavish fixtures and meticulous attention to detail, offers a respite for rejuvenation and relaxation

Beyond the confines of this stunning home, the allure of outdoor living beckons. A gated driveway to the front stands as a sentinel of security and convenience, while the landscaped tiered garden, a verdant oasis, unfolds with breathtaking views towards Pendle Hill and the undulating countryside, offering an idyllic backdrop for al fresco gatherings and moments of tranquil contemplation.

In every facet, this residence epitomises sophistication and elegance, presenting an opportunity to immerse oneself in a lifestyle of unparalleled refinement. Don't hesitate to seize the chance to claim this unparalleled sanctuary as your own.

Viewing appointment is highly recommended.

View more about this property online....

www.pettyreal.co.uk

 @PettyEstAgents  /pettyestateagents