

Because life is

Petty<sup>TM</sup>  
Real

3 Carleton Road  
Colne  
BB8 8JP



For Sale

£200,000

- Immaculate semi detached property
- Sought after location
- Ideal for a small family or downsizer
- Near to amenities
- Lounge with stove

- Open plan dining kitchen
- Conservatory
- Three bedrooms
- Three piece shower room
- Garage, driveway & garden



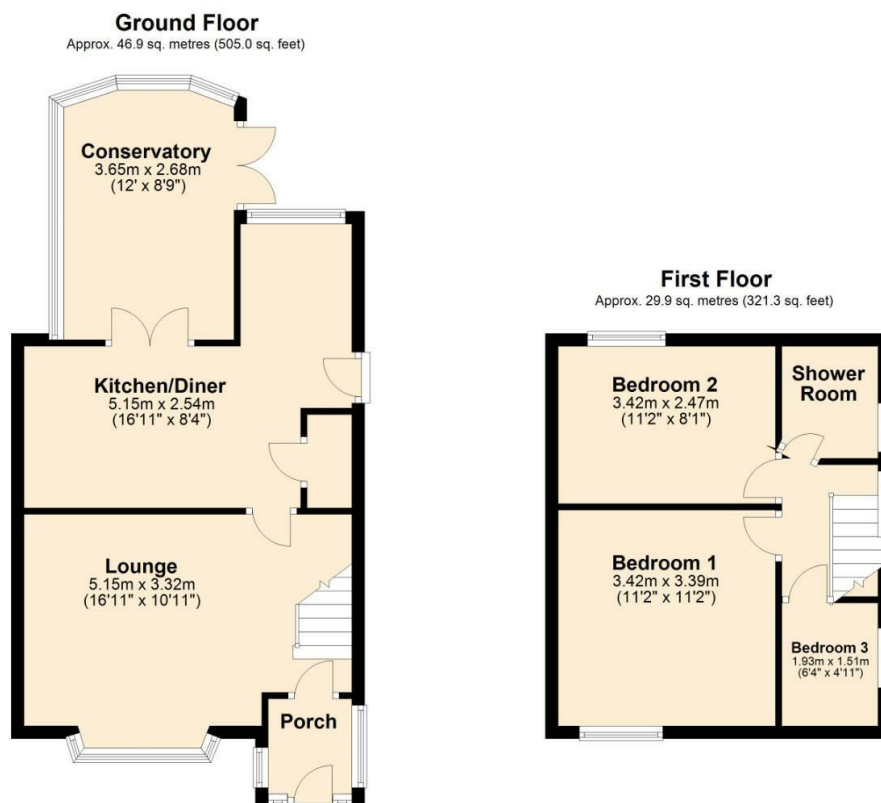
Nestled in a sought-after location, this immaculate three-bedroom semi-detached home offers the perfect blend of style and functionality.

The charming porch sets the tone for what lies beyond—a meticulously maintained interior awaiting its new owners. Step into the inviting lounge, where the warmth of the multi-fuel stove creates a cozy ambiance, perfect for relaxing with loved ones. The lounge seamlessly flows into the open-plan dining kitchen, a hub of activity equipped with modern appliances, making meal preparation a breeze. Adjacent to the kitchen, the bright and airy conservatory boasts an insulated roof, providing a tranquil space to enjoy the garden views year-round.

To the first floor are three bedrooms each with built in storage, the property also features a modern three-piece shower room.

Outside, the beautifully landscaped garden offers a private oasis for outdoor gatherings and al fresco dining. The stamped concrete driveway and garage providing ample parking space and storage options.

Conveniently located close to schools and amenities, this property offers not just a home, but a lifestyle. Don't miss the opportunity to make this your own slice of paradise.



Total area: approx. 76.8 sq. metres (826.3 sq. feet)



These particulars, whilst believed to be accurate are set out as a general outline only for guidance and do not constitute any part of an offer or contract. Intending purchasers should not rely on them as statements of representation of fact, but must satisfy themselves by inspection or otherwise as to their accuracy. No person in this firm's employment has the authority to make or give any representation or warranty in respect of the property.

11 Albert Road, Colne, Lancashire, BB8 0RY  
T. 01282 868686  
Colne.sales@pettyreal.co.uk

[www.pettyreal.co.uk](http://www.pettyreal.co.uk)