

Because life is

Petty
Real™

73 Skipton Road
Trawden
BB8 8RD



For Sale

£235,000

- Stunning semi detached property
- Sought after village location
- Ideal for a family or downsizer
- Lounge
- Fitted dining kitchen with appliances

- Modern bathroom
- Three bedrooms
- Landscaped garden to the rear
- Driveway & garage
- Viewing recommended

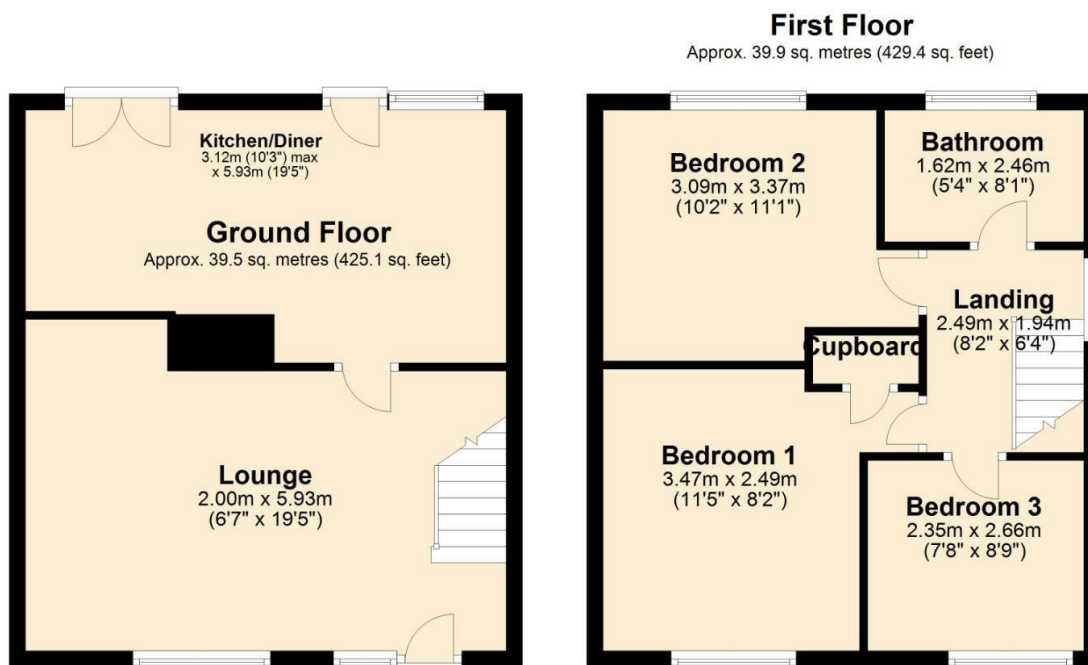


Nestled within the picturesque village of Trawden, this semi-detached property exudes charm and sophistication. Step into the welcoming lounge, a haven for relaxation with its cozy ambiance and inviting atmosphere. The fully fitted dining kitchen is a culinary delight, boasting sleek countertops, modern cabinetry, and a suite of built-in appliances that elevate both functionality and style, making it the heart of the home.

Upstairs, three generously sized bedrooms await, each offering a peaceful sanctuary for rest and rejuvenation. The modern bathroom provides a luxurious retreat, complete with elegant fixtures and contemporary finishes, ensuring convenience and comfort for all occupants.

Outside, the landscaped rear garden is a serene oasis, perfect for enjoying al fresco dining, entertaining guests, or simply unwinding amidst nature's beauty. With off-road parking and a garage, convenience is at your doorstep, providing ample space for vehicles and storage.

Renovated within the last three years, this property seamlessly blends modern comforts with timeless charm, offering a harmonious blend of style, functionality, and tranquility for discerning homeowners seeking the perfect retreat in the heart of Trawden's sought-after village setting.



Total area: approx. 79.4 sq. metres (854.5 sq. feet)



These particulars, whilst believed to be accurate are set out as a general outline only for guidance and do not constitute any part of an offer or contract. Intending purchasers should not rely on them as statements of representation of fact, but must satisfy themselves by inspection or otherwise as to their accuracy. No person in this firm's employment has the authority to make or give any representation or warranty in respect of the property.

11 Albert Road, Colne, Lancashire, BB8 0RY
T. 01282 868686
Colne.sales@pettyreal.co.uk

www.pettyreal.co.uk