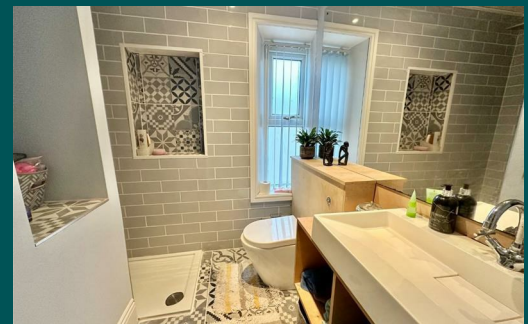


Because life is

PettyTM
Real

92 Berkeley Street
Nelson
BB9 0RQ



For Sale

£90,000

- Modern mid terrace
- Superb garden to the front
- Off road parking
- Ideal for someone downsizing or first home
- Lounge

- Modern kitchen
- Two bedroom
- Modern shower room
- Yard to the rear
- Viewing recommended



D

Located a short distance away from the amenities and public transport links offered by Nelson town centre, this superb modern mid terrace dwelling has an excellent sized and well tended long garden to the front together with off road parking. This a perfect home for a first time buyer to gain a foothold on the property ladder.

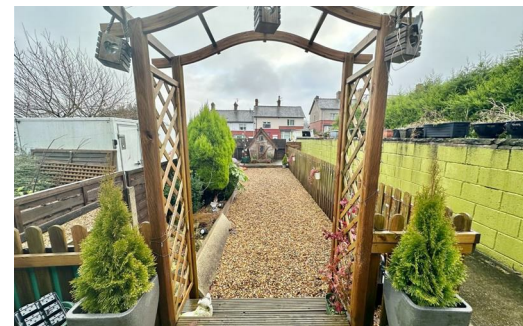
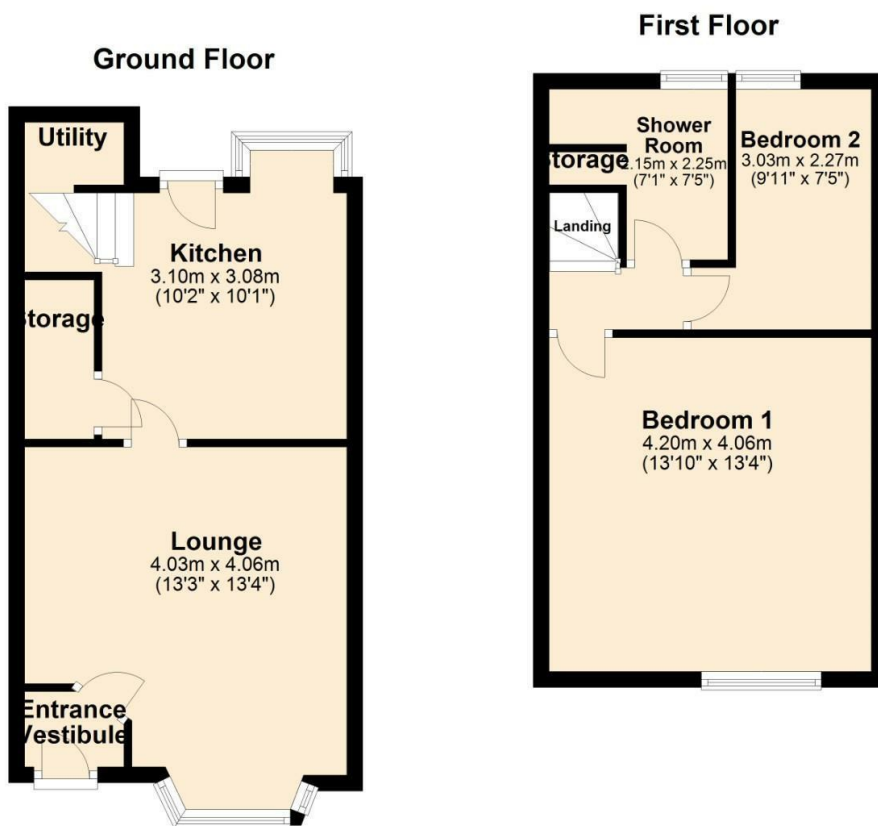
The property offers modern living accommodation arranged over two floors and comprises on the ground floor, entrance vestibule access by a UPVC double glazed door, good sized lounge. Modern fitted kitchen housing an excellent range of wall and base units with complementary work surfaces and splash backs, integrated oven and hob with extractor fan over, fridge freezer, UPVC double glazed door leading to the rear yard, useful utility area.

To the first floor is an excellent sized double bedroom to the front with fitted storage cupboard, a good sized second bedroom to the rear and a modern three piece modern shower room in white comprising shower enclosure, vanity sink unit and wc.

Additionally to the outside is an enclosed yard to the rear.

The property benefits from the modern day comforts of UPVC double glazing, gas fired central heating and an internal viewing appointment is recommended.

*** Looking for a buy-to-let investment or looking to let your own property? We have a professional lettings department for all your requirements ***



These particulars, whilst believed to be accurate are set out as a general outline only for guidance and do not constitute any part of an offer or contract. Intending purchasers should not rely on them as statements of representation of fact, but must satisfy themselves by inspection or otherwise as to their accuracy. No person in this firm's employment has the authority to make or give any representation or warranty in respect of the property.

11 Albert Road, Colne, Lancashire, BB8 0RY
T. 01282 868686
Colne.sales@pettyreal.co.uk

www.pettyreal.co.uk