

Because life is

Petty
Real™

Apartment 12 Derwent House
Grenfell Gardens
Colne
BB8 9PN



For Sale

Reduced £275,000

- PICTURESQUE GREENBELT COUNTRYSIDE
- EXCEPTIONAL HIGH STANDARDS
- SPACIOUS ACCOMMODATION
- SECURITY GATED VIDEO ENTRY
- CAR PARKING SPACE - STORAGE

- CARPETS / UNDERFLOOR HEATING
- STYLISH DESIGNER KITCHEN
- EN SUITES
- TWO DOUBLE BEDROOMS
- INTEGRATED APPLIANCES



Derwent House is located in the picturesque greenbelt countryside of Barrowford overlooked by the famous Pendle Hill. This former Edwardian Grammar School offers 23 spacious and well appointed apartments that have been sympathetically restored to offer an elegant combination of time honoured craftsmanship and modern design.

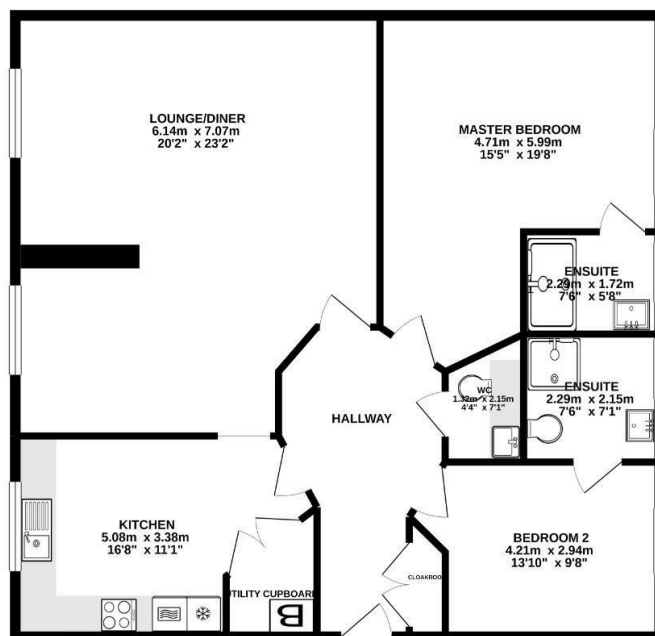
Conceived and created by renowned local company, H R Developments, the apartments have been designed to complement the existing building and offer exceptional high standards of finish throughout. Unlike many developments of this nature, each apartment enjoys unusually generous proportions.

Great consideration has also been given to privacy and peace of mind. The location offers a security-gated, video entry system with secure underground parking. Each allocated car parking space has an individual and safe storage area. The apartment offers an effective and aesthetic use of space and is carpeted throughout, with economical and ambient under-floor heating where its needed most.

The apartment has been fitted with a stylish designer kitchen, bathroom and en-suites. As well as two superb double bedrooms and two piece cloak room. In these areas, natural light is complemented by discrete ceiling down lighters, helping to create just the right mood for relaxing and entertaining.

The kitchen is of carefully considered ergonomic design and well-organised practicality are the hallmarks of these stunning, German, designer kitchens with granite work surfaces with high quality, fully fitted units and integrated appliances. The en suites and cloak room have been installed with high quality sanitary ware, stylish designer tiling.

GROUND FLOOR
113.3 sq.m. (1220 sq.ft.) approx.



TOTAL FLOOR AREA - 113.3 sq.m. (1220 sq.ft.) approx.
Whilst every attempt has been made to ensure the accuracy of the floor plan contained here, measurements of doors, windows, stairs and any other items are approximate and no responsibility is taken for any errors, omissions or mis-statements. This plan is for illustrative purposes only and should be used as such by any prospective purchaser. The finishes, systems and appliances shown have not been tested and no guarantee as to their operability or efficiency can be given.
Made with Homestyler (2020)



These particulars, whilst believed to be accurate are set out as a general outline only for guidance and do not constitute any part of an offer or contract. Intending purchasers should not rely on them as statements of representation of fact, but must satisfy themselves by inspection or otherwise as to their accuracy. No person in this firm's employment has the authority to make or give any representation or warranty in respect of the property.

11 Albert Road, Colne, Lancashire, BB8 0RY
T. 01282 868686
Colne.sales@pettyreal.co.uk

www.pettyreal.co.uk