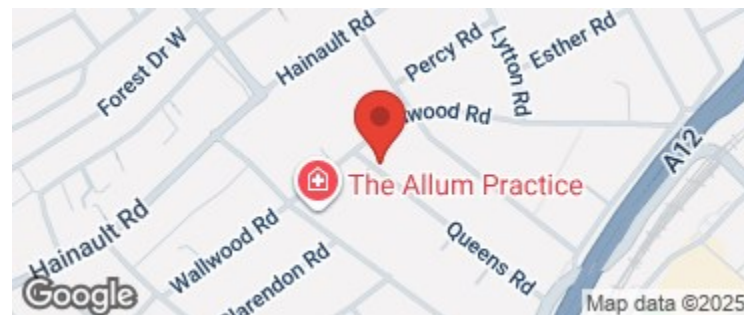
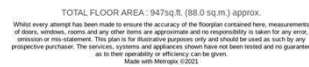


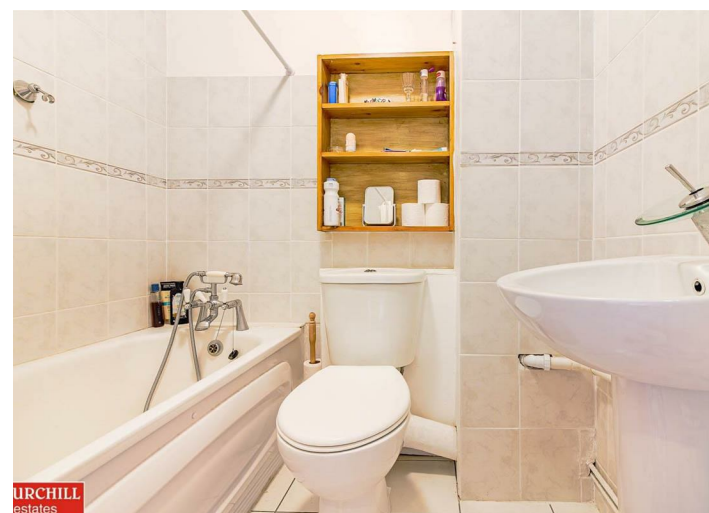
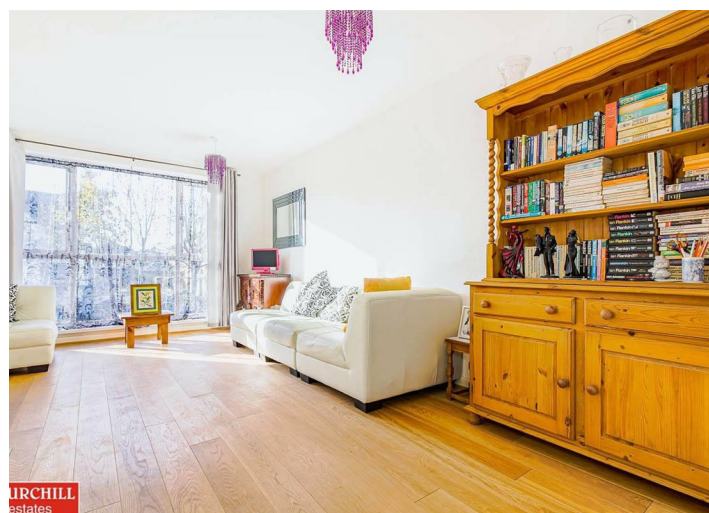
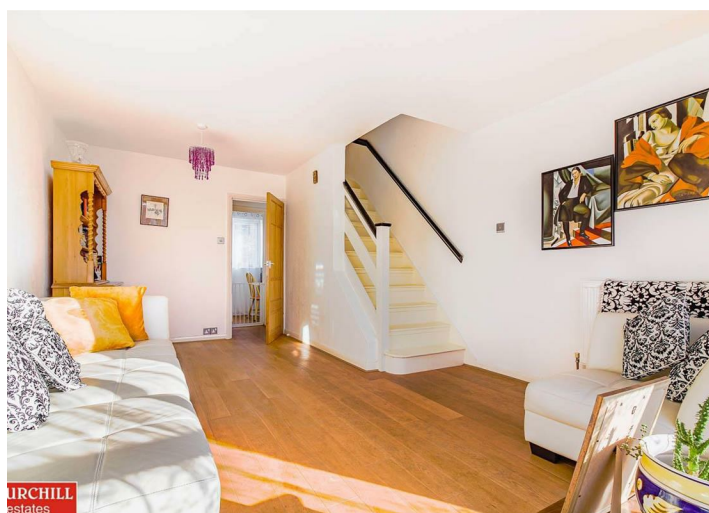
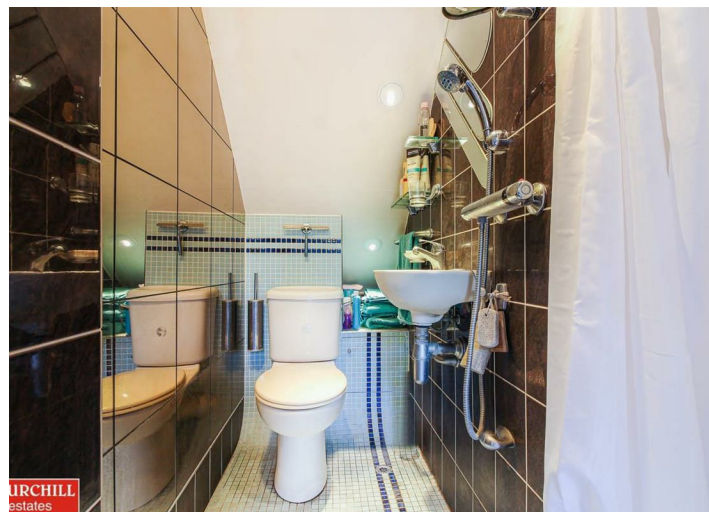
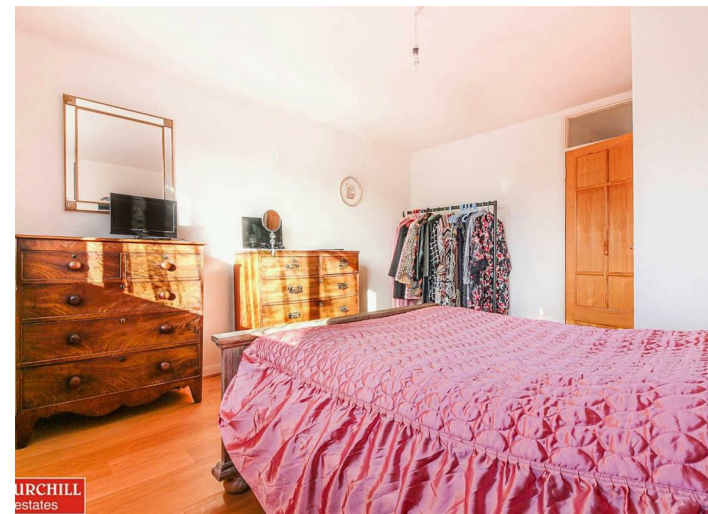
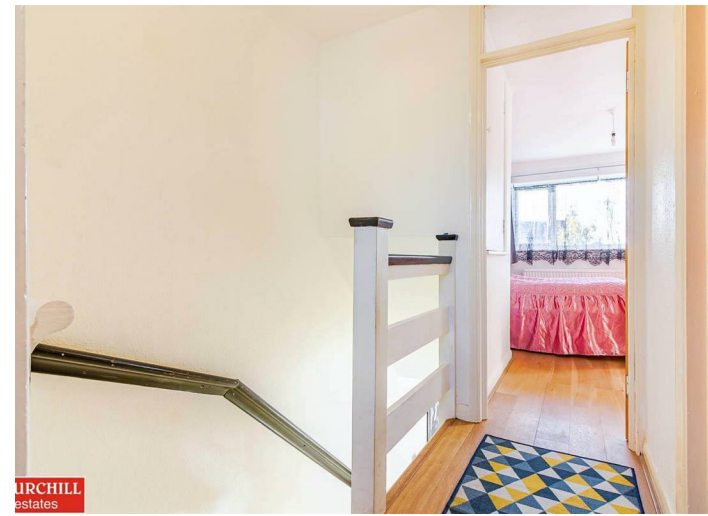
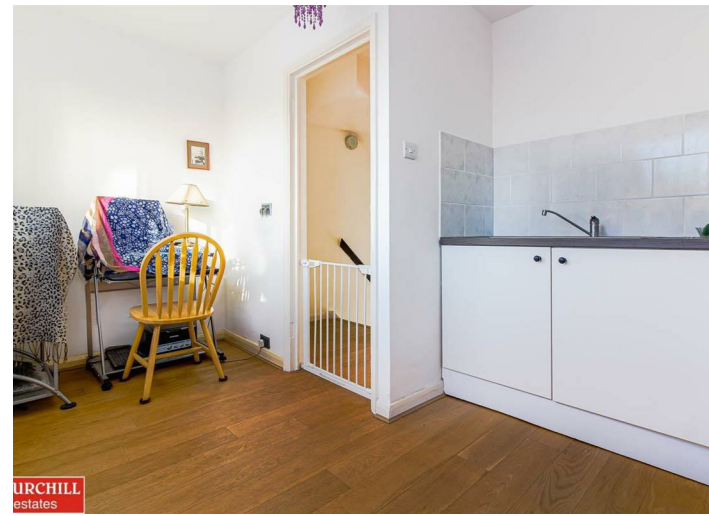
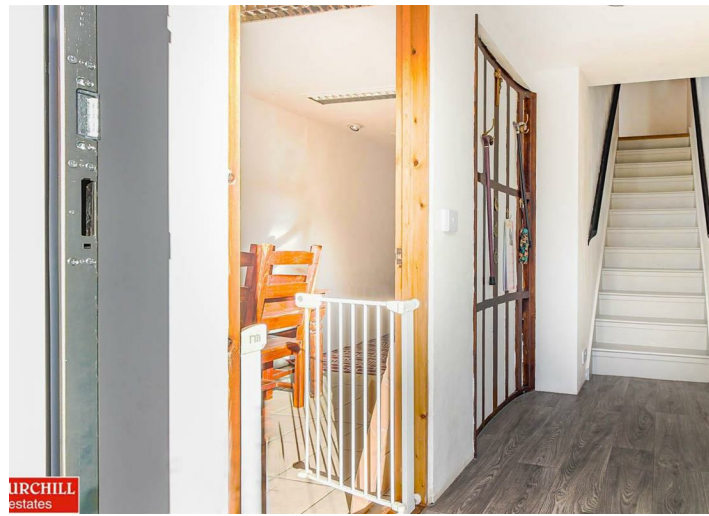
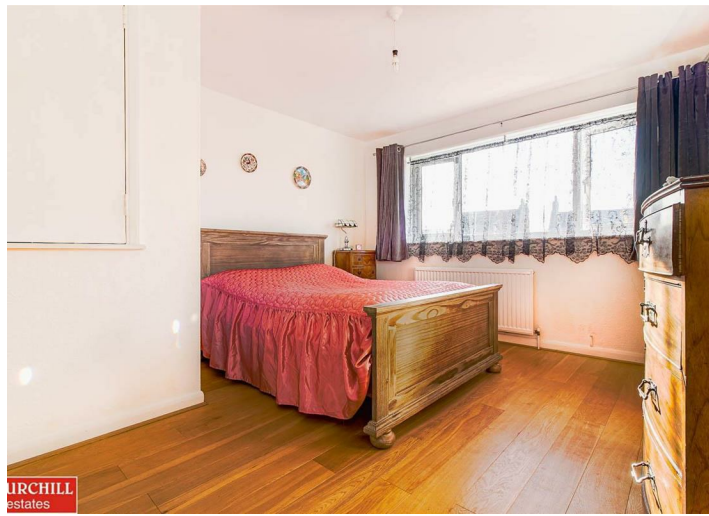
CHURCHILL
estates



To view call **020 8989 0011**
Email wanstead@wearechurchills.co.uk



To view call **020 8989 0011**
Email wanstead@wearechurchills.co.uk



Spanning across three floors offering in excess of 947sqft of well proportioned living space throughout, the ground floor compromises a generous fitted kitchen, dedicated dining area and fully tiled wet room.

The first floor comprises a sizeable lounge with floor to ceiling windows, flooding the room with an abundance of natural light and a guest bedroom currently being utilized as a home office. The third floor occupies two large double bedrooms and a generous three piece family bathroom.

Further benefits include a large front drive with space enough for two cars, a private and secluded rear garden, gas central heating and double glazing throughout.

For more information or to arrange an appointment to view please contact the office at your earliest convenience to avoid disappointment.