

# ARDEN & WAY

## BLOCK MANAGEMENT & LETTINGS



96 Elm Grove

, Hayling Island, PO11 9EH

**£1,550**

Arden & Way are delighted to present to the lettings market this exceptionally spacious three bedroom maisonette. In excellent condition throughout, this property is newly decorated. Entering the property from the rear via Palmerston Road, this maisonette has its own private entrance, you approach the property through the large garden. The ground floor accommodation consists of an entrance hall, a utility room, downstairs toilet and an open plan lounge/kitchen/diner. Upstairs, there are three double bedrooms and a modern family bathroom. Located in a very convenient area this property is close to shops and schools, a perfect home.

Please Contact Arden & Way for more information or to arrange a viewing.

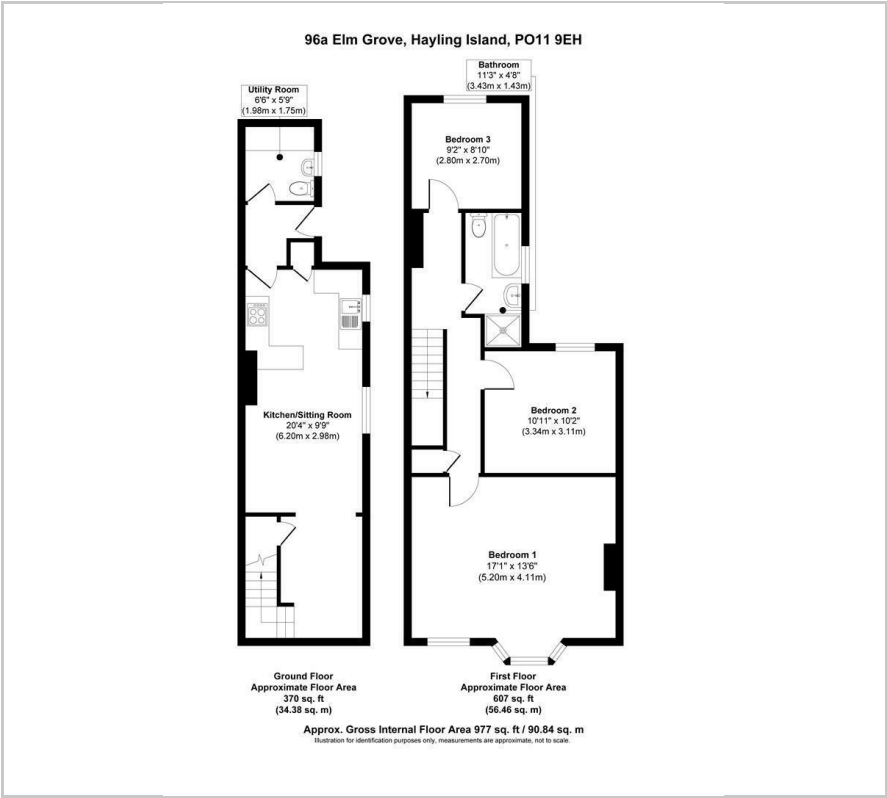
### Viewing

Please contact our Arden & Way Office on 02392 460 899 if you wish to arrange a viewing appointment for this property or require further information.





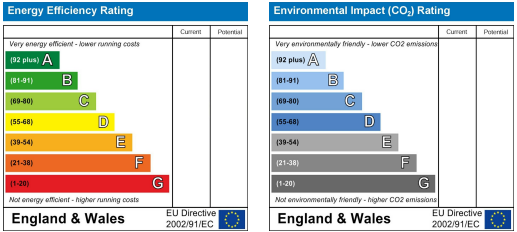
Floor Plan



Area Map



Energy Efficiency Graph



These particulars, whilst believed to be accurate are set out as a general outline only for guidance and do not constitute any part of an offer or contract. Intending purchasers should not rely on them as statements of representation of fact, but must satisfy themselves by inspection or otherwise as to their accuracy. No person in this firms employment has the authority to make or give any representation or warranty in respect of the property.

120 Elm Grove, Hayling Island, Hampshire, PO11 9EH

Tel: 02392 460 899

Email: [info@ardenway.co.uk](mailto:info@ardenway.co.uk)

[www.ardenway.co.uk](http://www.ardenway.co.uk)