

ARDEN & WAY

BLOCK MANAGEMENT & LETTINGS



Flat 26 The Gorseway, 354 Sea Front Sea Front , Hayling Island, PO11 0BA

£99,950

Arden & Way is pleased to offer for sale this spacious second-floor, two-bedroom flat located in a popular and convenient block. The Gorseway retirement community, designed for individuals aged 55 and over, is situated on Sea Front Road in West Hayling, perfectly positioned to enjoy everything Hayling Island has to offer.

The accommodation includes a hallway, lounge/diner, fitted kitchen, bathroom, and two bedrooms with built-in wardrobes. Residents have access to attractive communal gardens featuring a fountain and pond. Additional benefits include off-road parking, UPVC double glazing, and electric heating.

For more information or to arrange a viewing, please contact Arden & Way!

Viewing

Please contact our Arden & Way Office on 02392 460 899 if you wish to arrange a viewing appointment for this property or require further information.



2



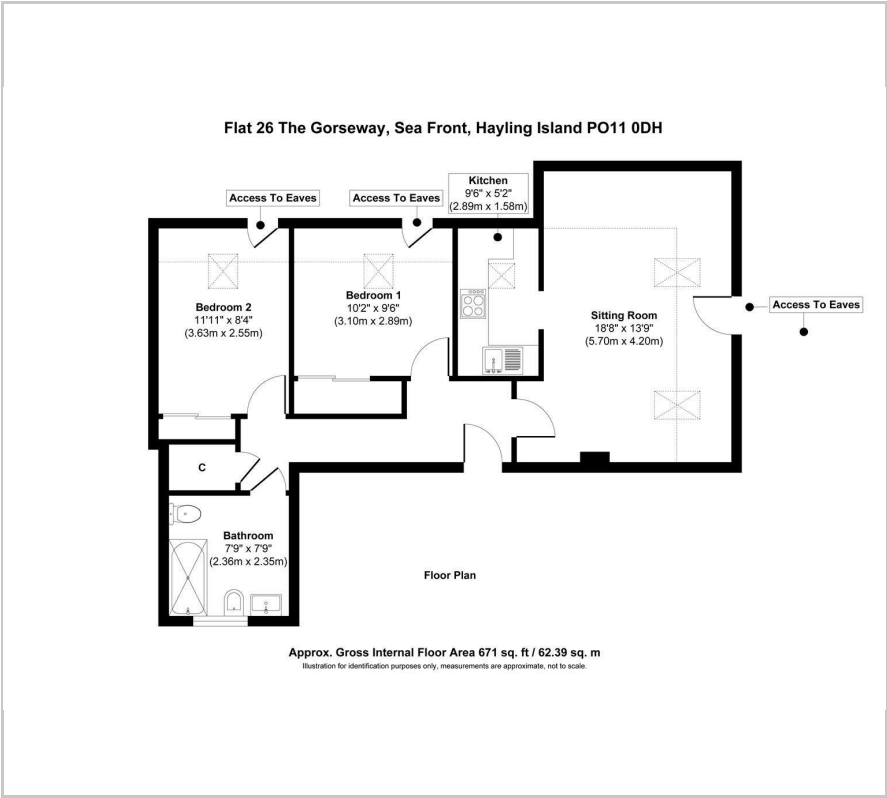
1



1



Floor Plan



Area Map



Energy Efficiency Graph



These particulars, whilst believed to be accurate are set out as a general outline only for guidance and do not constitute any part of an offer or contract. Intending purchasers should not rely on them as statements of representation of fact, but must satisfy themselves by inspection or otherwise as to their accuracy. No person in this firms employment has the authority to make or give any representation or warranty in respect of the property.

120 Elm Grove, Hayling Island, Hampshire, PO11 9EH

Tel: 02392 460 899

Email: info@ardenway.co.uk

www.ardenway.co.uk