



PROPERTY
BUREAU
LETTING & ESTATE AGENTS



Montgomerie Terrace
Skelmorlie
PA17 5DT

5 
2 
3 

Offers Over £485,000

Mallowdale is a beautiful 5 bedroom lower conversion of c 2500 sq ft and in the most fantastic position with stunning elevated outlooks over the Firth of Clyde.

The villa (formerly known as Innes Villa) has an impressive architectural history. It was built in 1874 by the renowned architect John Honeyman (1831-1914) who designed a number of houses in Skelmorlie having built his own house (Stroove) at the end of Montgomerie Terrace in 1868. Honeyman was one of the foremost architects in Glasgow during the mid/late 19th century. Honeyman (1831 - 1914) formed the practice, Honeyman & Keppie and this new partnership was supported by four brilliant assistants, Alexander McGivan, Herbert McNair, Charles Edward Whitelaw and Charles Rennie Mackintosh. Of these assistants, Mackintosh became the lead designer in the practice whilst Herbert McNair who married Mackintosh's sister also lived in Montgomerie Terrace.

The house is approached from its own private driveway at the front which leads to a large driveway and the impressive large garage.

The remainder of the front garden comprises a large formal lawn area and at the far side, just next to the main entrance, is a lovely sheltered sitting area which provides some fantastic outlooks.



Home Report Valuation
£500,000

www.onesurvey.org

Council Tax Band F

EPC Rating D



The house itself internally has been modernised to a very high standard and is in excellent condition for a home built in period. The interior upgrading includes beautiful bathroom, lovely en suites and an upgraded kitchen area to include a wood burning stove and fireplace.

There are some beautiful traditional features throughout the house including magnificent stain glass windows, stunning ceiling cornice and centre rose in addition to impressive original quality wood panelling in the hallway.

The accommodation comprises large entrance hallway which has an L shape configuration with all the rooms flowing off this impressive area.

At the front of the property is a large drawing room which has a stunning view over the private gardens and beyond.

The kitchen is the focal point of the house and has been beautifully upgraded to include ample floor and wall storage units with integrated appliances including double oven and grill and a wine fridge all sent round a lovely granite Island unit with breakfast bar. The current owner has enhanced this impressive living space with addition of a wood burner and there is a corner window providing beautiful outlook onto the grounds.

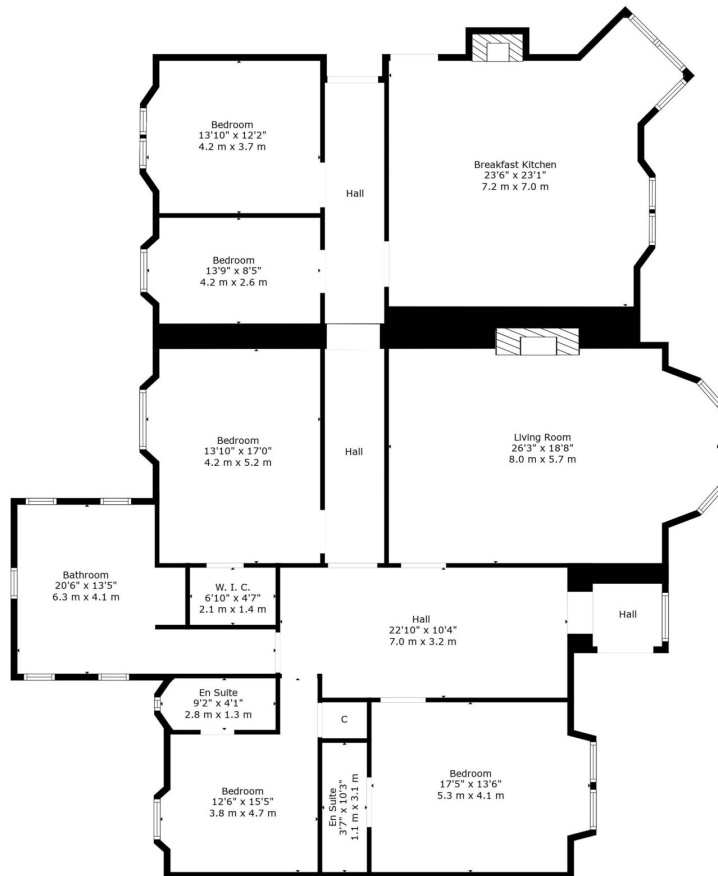
There are five bedrooms in total with two of the bedrooms having en suite shower rooms and then a large family bathroom which is exceptionally luxurious and features beautiful tiling, wood panelling, stain glass windows and underfloor heating.

The property is heated with gas fire central heating.



Vendor Comments

Fantastic place to stay and unbelievable views which we will greatly miss but I know new owners will really enjoy them.



TOTAL: 2638 sq. ft, 245 m2
FLOOR 1: 2638 sq. ft, 245 m2
EXCLUDED AREAS: FIREPLACE: 11 sq. ft, 1 m2

All Measurements Are Calculated By Cubicasa Technology - Deemed Highly Reliable But Not Guaranteed. Visit Our Website - <https://www.filmworx.co.uk>

Location

There is a primary school in Skelmorlie and secondary schooling can be found at Largs Academy with Glasgow and Kilmacolm providing an excellent choice of private schooling. For sailing enthusiasts, the Firth of Clyde provides some of Scotland's most testing waters and is home to a number of acclaimed marinas including Kip Marina and Largs Yacht Haven where many fine craft can be found. For the golfing enthusiast, there are 137 courses within a 30 mile radius.





www.propertybureau.co.uk

Glasgow Stirling Helensburgh Lanarkshire

Melville House, 70 Drymen Road, Glasgow, G61 2RH

enquiries@propertybureau.co.uk
0141 943 1110

Whilst this brochure has been prepared with care, it is not a report on the condition of the property. Its terms are not warranted and do not constitute an offer to sell. All area and room measurements are approximate only. Floorplans may not be to scale.

