



Bulldale Place
Yoker, Glasgow
G14 0NE

2 
1 
2 

Offers Over £110,000

This Modern 2 bedroomed Ground Floor Flat is situated within an attractive building in a quiet riverside location, close to main traffic routes and local shops.

Built by Persimmon Homes, the building is finished with a pleasant combination of low maintenance facing brick and white render, beneath a hipped concrete tiled roof. The building is entered at the side entrance via security controlled main door which opens to a communal hallway with stairs leading to all levels.

The development is surrounded by well maintained pathways, neat lawned areas and has some lovely flowering cherry trees at the far side of the block.

The accommodation comprises hallway with storage cupboard, large main lounge/living room with bay window and space at the far side for dining table.

The kitchen has an excellent range of floor and wall storage units with integrated hob, oven and hood, stainless steel sink at the window and has plumbing for washing machine. Ample worktop surface area.



Home Report Valuation £120,000

www.packdetails.com
Reference: HP763158
Postcode: G14 0NE

Council Tax Band C

EPC Rating C



There are two double bedrooms, both with built in wardrobes and the master with en suite shower room which has a three piece suite comprising pedestal wash hand basin, corner shower stall and a w.c..

Main bathroom has a three piece suite comprising panelled bath, wash hand basin and a w.c.

The property further benefits from gas central heating, double glazing and has carpets and blinds included.

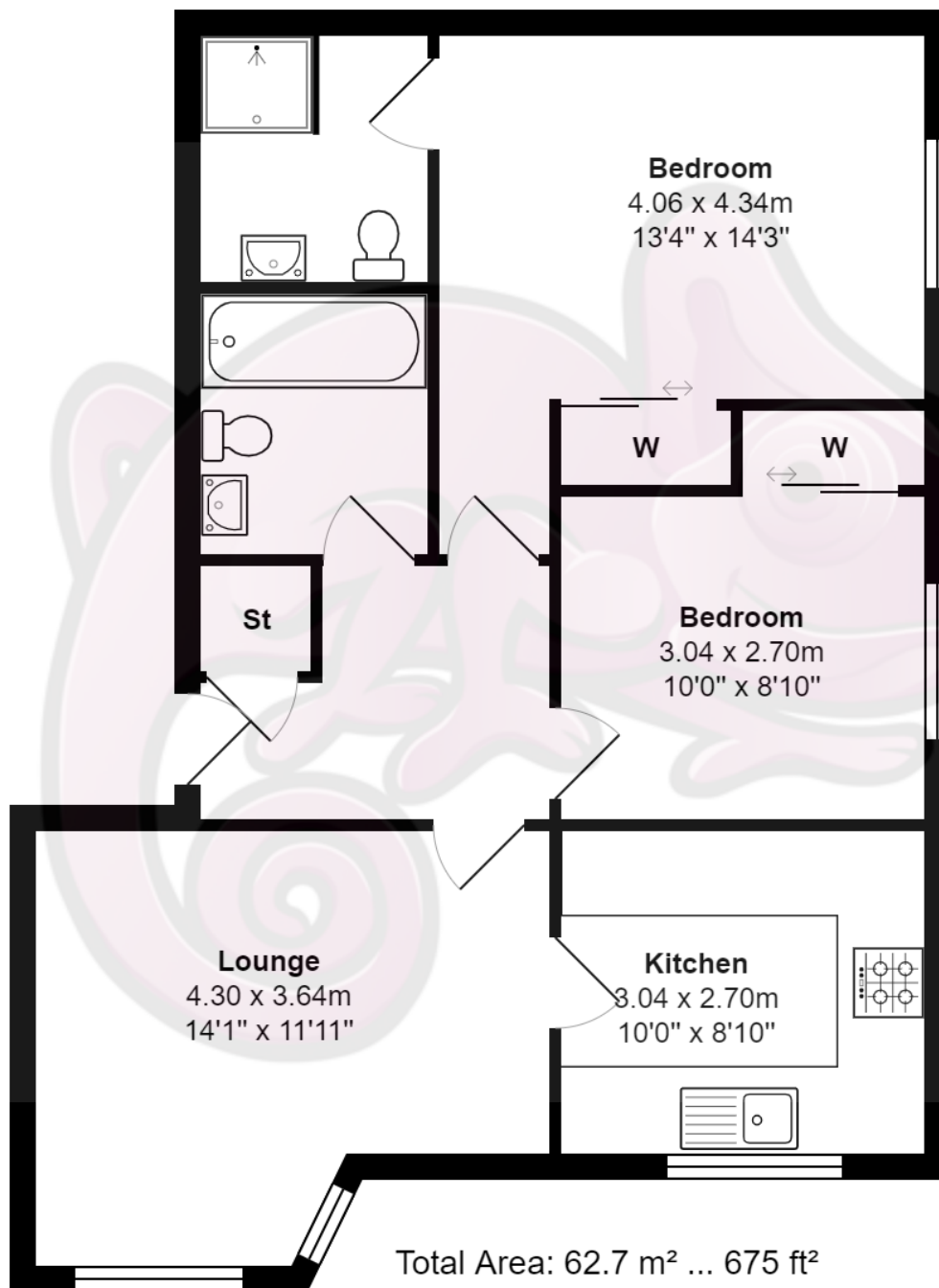


Within the next 12 months the new two-lane bridge, costing c. £80 million, is schedule to be completed. This will accommodate vehicles, pedestrians and cyclists and open for passing ships, spanning 184-metres from Glasgow and West Dunbartonshire to Renfrew and Braehead.



Vendor Comments

This has been a great flay which my daughter enjoyed living in and then we had a very successful letting period since then.



All measurements are approximate and for display purposes only

Location

Bulldale Place is located off Dumbarton Road and provides easy access to the Clyde Tunnel, Clydeside Expressway and M8 motorway network. In the sought after Yoker district in the West End of Glasgow. Close to excellent local shops and amenities. Well sited for nearby bus services along Dumbarton Road and a nearby railway station. Located near to the River Clyde and Renfrew Ferry.





www.propertybureau.co.uk

Glasgow Stirling Helensburgh Lanarkshire

Melville House, 70 Drymen Road, Glasgow, G61 2RH

enquiries@propertybureau.co.uk
0141 943 1110

Whilst this brochure has been prepared with care, it is not a report on the condition of the property. Its terms are not warranted and do not constitute an offer to sell. All area and room measurements are approximate only. Floorplans may not be to scale.

