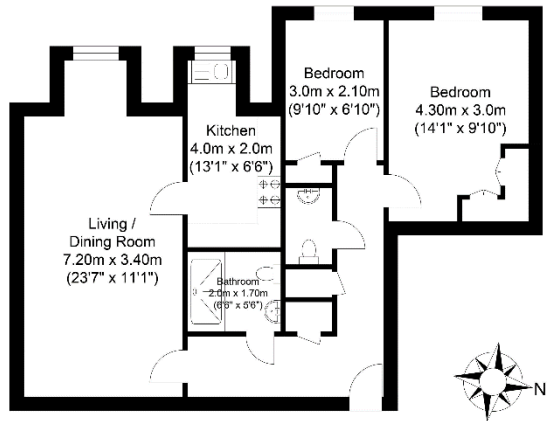
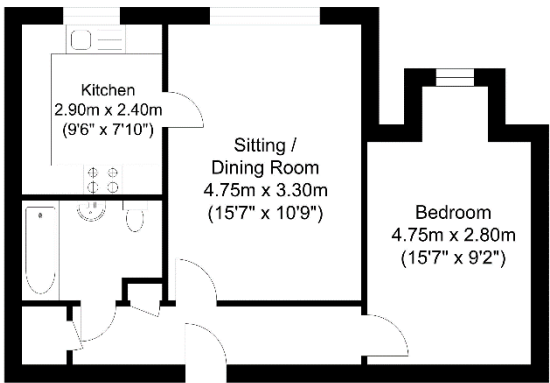


the floorplan...

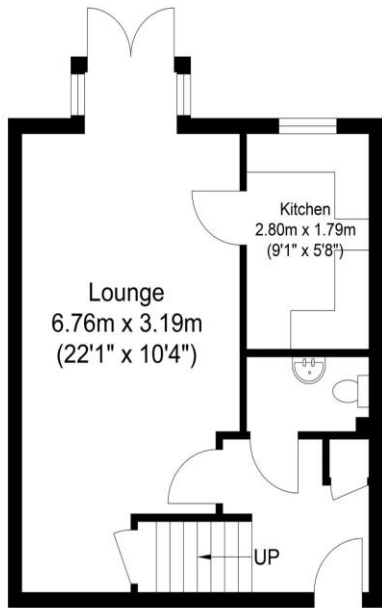


Approximate Floor Area  
718.06 sq ft  
(66.71 sq m)

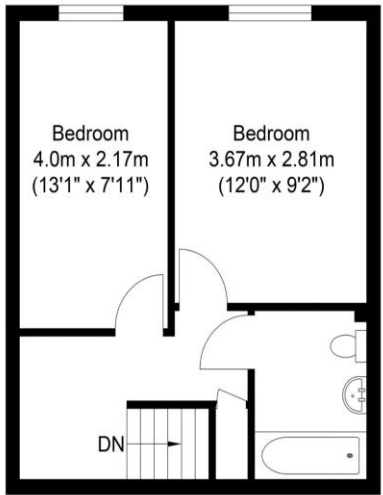


Approximate Floor Area  
492.23 sq ft  
(45.73 sq m)

Approximate Gross Internal Area = 45.73 sq m / 492.23 sq ft  
Illustration for identification purposed only, measurements are approximate, not to scale.  
Copyright GDImpact 2020



Ground Floor  
Approximate Floor Area  
337.55 sq ft  
(31.36 sq m)



First Floor  
Approximate Floor Area  
318.93 sq ft  
(29.63 sq m)

Approximate Gross Internal Area = 60.99 sq m / 656.49 sq ft  
Illustration for identification purposed only, measurements are approximate, not to scale.  
Copyright GDImpact 2020

A superb selection of one and two-bedroom retirement properties situated in the ever-popular Ladies Mile Court

FROM £190,000  
Leasehold

Ladies Mile Court, Patcham BN1 8QN



**MANSELL  
McTAGGART**  
Trusted since 1947

more details from...

call: Patcham office: **01273 508955**

email: [patcham@mansellmctaggart.co.uk](mailto:patcham@mansellmctaggart.co.uk)

web: [www.mansellmctaggart.co.uk](http://www.mansellmctaggart.co.uk)

**MANSELL  
McTAGGART**  
Trusted since 1947

Consumer Protection from Unfair Trading Regulations 2008 We have not tested any apparatus, equipment, fixtures, fittings or services and so cannot verify that they are in working order or fit for purpose. You are advised to obtain verification from your solicitor or surveyor. References to the tenure of a property are based on information supplied by the seller. We have not had sight of the title documents and a buyer is advised to obtain verification from their solicitor. Items shown in photographs are not included unless specifically mentioned within the sales particulars, but may be available by separate negotiation. We advise you to book an appointment to view before embarking on any journey to see a property, and check its availability.



## *in brief...*

- A Superb Selection Of Retirement Properties
- Sought After Village Location
- Most Available With No Chain
- Communal Gardens
- Lift To All Floors
- Brochures For Individual Properties Available
- Resident Manager And 24-Hour Emergency Response Pull Cords
- A Popular Retirement Development
- Virtual Viewings Available!
- Varying Size, Specification And Pricing.



## *in more detail...*

Mansell McTaggart are delighted to present a selection of well-presented and versatile one/two-bedroom retirement properties situated in the ever-popular Ladies Mile Court development, exclusively available to the over-60s.

All properties benefit from a pleasant and secure environment for residents with a manager, emergency alarm system, carpeted communal ways and a lift.

There is also a lovely garden area for residents use and parking on first come first served basis.

We have a range of properties available from one-bedroom apartments to a two-bedroom cottage all of which have varying levels of specification and square footage along with pricing to match.

Please view our detailed video tour for a closer look at all the properties available for sale.

More information on individual homes and full brochures are available on request.

Please call Mansell McTaggart on 01273 508955 for more information or to arrange an in person or virtual viewing.



## *the location...*

Being located in this ideal position at the lower end of Ladies Mile Road allows easy access to the village shops which includes a newsagents/post office, a Co-op and bakery.

There is also a regular bus service, with stops nearby, for journeys to and from the city centre.

Various cafes and restaurants are in the area and there is easy road access to the A23.

**DIRECTIONS:** From our office head along the Old London Road and turn left into Ladies Mile Road.

## *worth bearing in mind...*

Full service charges and a key information form is available upon request for each property.



*The perfect  
position within  
Patcham!*

