



16 Jay Close, Southwater RH13 9TT

£1,500 pcm

**MANSELL  
McTAGGART**  
Trusted since 1947

## 16 Jay Close

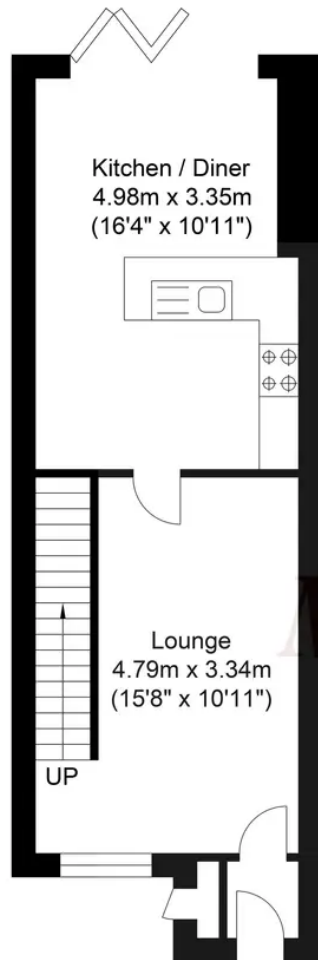
Southwater, Horsham RH13 9TT

Extended two bedroom end of terrace house with garden office

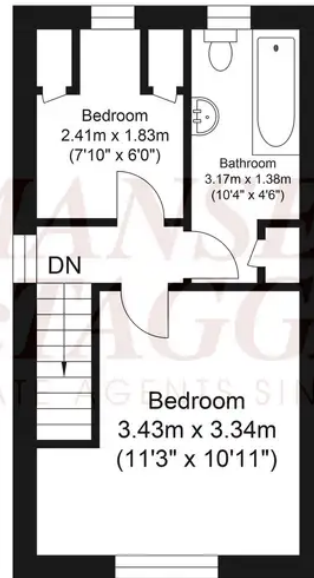
Council Tax band: C

- EXTENDED TWO BEDROOM END OF TERRACED HOUSE
- LOUNGE WITH FEATURE WALL PANELLING
- EXTENDED KITCHEN/DINER WITH INTEGRATED APPLIANCES
- DOUBLE BEDROOM WITH BUILT IN WARDROBES
- SINGLE BEDROOM WITH BUILT IN STORAGE
- BATHROOM WITH P SHAPED SHOWER BATH
- ENCLOSED REAR GARDEN WITH HOME OFFICE & STORAGE SHED
- ALLOCATED PARKING TO REAR

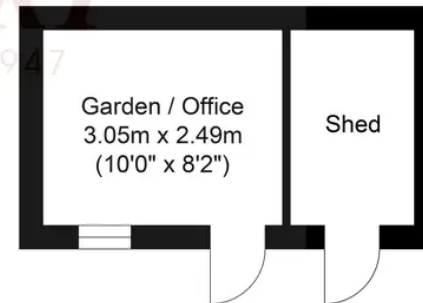




Ground Floor  
Approximate Floor Area  
370.92 sq ft  
(34.46 sq m)



First Floor  
Approximate Floor Area  
241.64 sq ft  
(22.45 sq m)



Outbuilding  
Approximate Floor Area  
126.79 sq ft  
(11.78 sq m)



Approximate Gross Internal Area (Excluding Outbuilding) = 56.91 sq m / 612.57 sq ft  
Illustration for identification purposes only, measurements are approximate, not to scale.



## Mansell McTaggart Brighton & Hove

Mansell McTaggart, 138 Old London Road - BN1 8YA

01273 508955

[patcham@mansellmctaggart.co.uk](mailto:patcham@mansellmctaggart.co.uk)

[www.mansellmctaggart.co.uk/branch/brighton](http://www.mansellmctaggart.co.uk/branch/brighton)

