

# HUNTERS®

HERE TO GET *you* THERE

## Tranmere Cottage & Carn Cottage

Price £500,000

Property Images





# HUNTERS<sup>®</sup>

HERE TO GET *you* THERE

## Property Images





# HUNTERS<sup>®</sup>

HERE TO GET *you* THERE

## Property Images

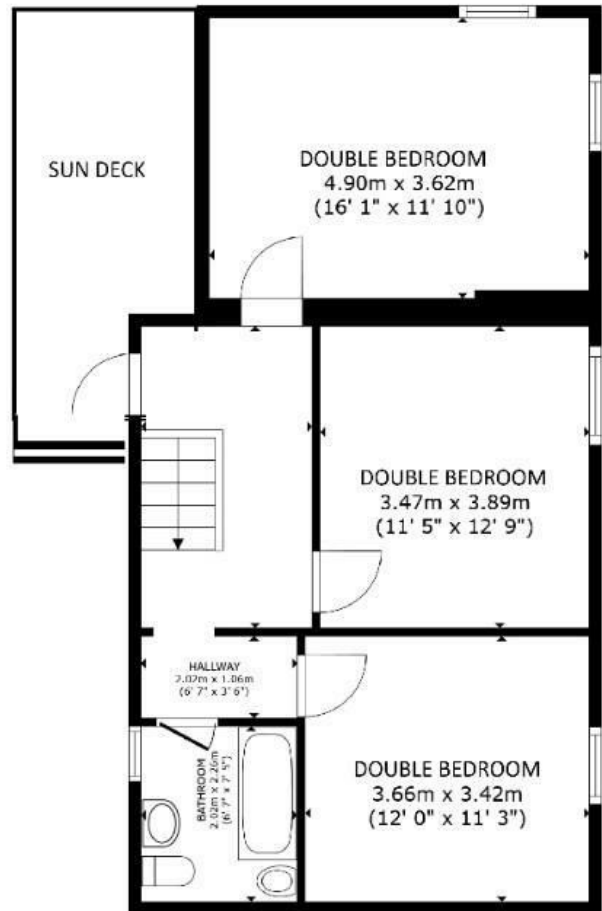


# HUNTERS®

HERE TO GET *you* THERE



Tranmere Cottage



Carn Cottage



ALL DIMENSIONS ARE APPROXIMATE, ACTUAL MAY VARY.

## Energy Efficiency Rating

|   | Current                 | Potential |
|---|-------------------------|-----------|
| Very energy efficient - lower running costs |                         |           |
| (92 plus) <b>A</b>                          |                         |           |
| (81-91) <b>B</b>                            |                         |           |
| (69-80) <b>C</b>                            |                         |           |
| (55-68) <b>D</b>                            |                         |           |
| (39-54) <b>E</b>                            |                         |           |
| (21-38) <b>F</b>                            |                         |           |
| (1-20) <b>G</b>                             |                         |           |
| Not energy efficient - higher running costs |                         |           |
| <b>England &amp; Wales</b>                  | EU Directive 2002/91/EC |           |



Nestled in the picturesque village of Long Preston, Skipton, this superb detached period home, set back from the main road, offers a unique blend of charm and functionality.

With four reception rooms and four well-proportioned bedrooms, this property is perfect for families or those seeking ample space for entertaining.

Including a holiday cottage, single garage and this property is chain free.

Close to the village Post Office, pub, bus stops and train station.

THERE ARE 2 VIRTUAL VIEWING TOURS. ONE FOR EACH PROPERTY.

Upon entering, you are greeted by a spacious entrance lobby, ideal for storing boots and coats. The light and airy breakfast-kitchen features traditional wood-fronted units, laminate worktops, and exposed timber ceiling joists, creating a warm and inviting atmosphere. This area seamlessly flows into a rear porch, providing additional utility space.

The dining room is a highlight, boasting a feature ceiling and a coal effect gas fire, perfect for cosy gatherings, with a ground floor WC off. The living room, with its open fire and exposed ceiling joists, exudes character and warmth, while a sealed door leads to Carn Cottage, a successful holiday rental included in the sale.

On the first floor, you will find three double bedrooms, offering plenty of room for relaxation, alongside a well-appointed house bathroom. A glazed door from the landing opens onto a 'secret south-facing sun terrace', providing a private outdoor retreat at first floor level, with fine countryside views.

Carn Cottage, once part of the main house, is now a thriving holiday cottage. It features a living-dining-kitchen on the upper ground floor and a comfortable ground floor double bedroom with a shower room, making it an excellent opportunity for additional income.

There are 4 boarded-out lofts for storage

Outside, the property boasts a detached single garage and driveway parking for two cars. The enclosed lawned garden is a delightful space for outdoor activities, complete with double gates for vehicle access if needed. There is a covered yard to the rear, with lighting, proving useful storage.

This property truly offers a wonderful lifestyle in a beautiful setting, making it a must-see for prospective buyers.

Nestled in the picturesque village of Long Preston, Skipton, this superb detached period home, set back from the main road, offers a unique blend of charm and functionality.

With four reception rooms and four well-proportioned bedrooms, this property is perfect for families or those seeking ample space for entertaining.

Including a holiday cottage, single garage and this property is chain free.

Close to the village Post Office, pub, bus stops and train station.

THERE ARE 2 VIRTUAL VIEWING TOURS. ONE FOR EACH PROPERTY.

### On-Line-Bullet-Points

- Chain Free • 2 of the price of 1 • A 3 double bed house • Plus a 2 storey double bed holiday cottage • Single garage, parking & enclosed garden • Dining room, living room, breakfast-kitchen • Charming period features & stonework • Set back from the main road • Some delightful views & outlook • Handy for train station, bus, pub and well stocked Post Office