

HUNTERS®

HERE TO GET *you* THERE

Burnside Crescent, Skipton

Price £225,000

Property Images



HUNTERS®

HERE TO GET *you* THERE

Property Images

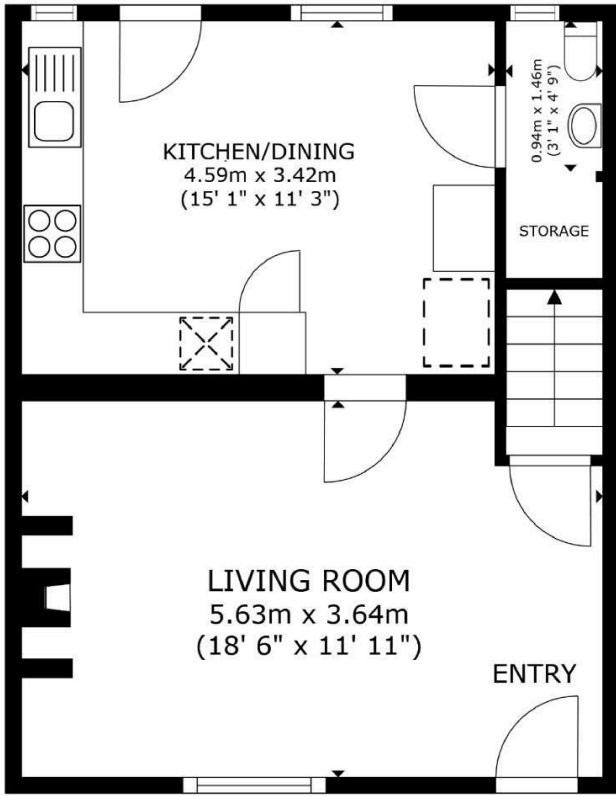


HUNTERS®

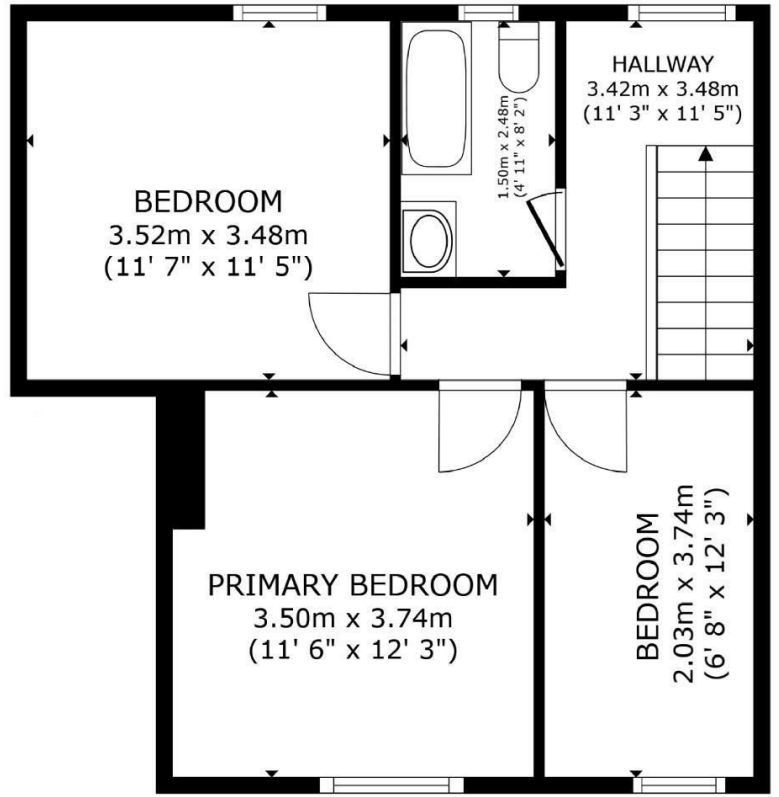
HERE TO GET *you* THERE

Property Images





FLOOR 1



FLOOR 2

SIZES AND DIMENSIONS ARE APPROXIMATE, ACTUAL MAY VARY.

Energy Efficiency Rating	
	Potential
Very energy efficient - lower running costs	
(92 plus) A	
(81-91) B	84
(69-80) C	70
(55-68) D	
(39-54) E	
(21-38) F	
(1-20) G	
Not energy efficient - higher running costs	
England & Wales	EU Directive 2002/91/EC



As you step inside, you are greeted by a warm and inviting living room featuring a multi-fuel stove, perfect for cosy evenings with loved ones.

This delightful property boasts a modern and spacious dining-kitchen, ideal for hosting family gatherings or intimate dinners. The convenience of a cloakroom/WC on the ground floor adds a practical touch to this lovely home.

Venture upstairs to find two generously sized double bedrooms and a cosy single bedroom, offering ample space for a growing family or visiting guests. The boutique-style bathroom exudes elegance with its pristine white suite and a shower over the bath, providing a tranquil space to unwind after a long day.

One of the highlights of this property is the enchanting rear garden, thoughtfully landscaped with lush greenery, well-stocked borders, a greenhouse, and a large timber shed. Imagine spending sunny afternoons relaxing in this serene outdoor oasis, a rare find in a bustling town like Skipton.

For those with multiple vehicles or a penchant for road trips, the large double parking bay at the front of the property is a practical convenience. Whether you have a car or a mobile home, there is ample space for parking, ensuring your vehicles are always secure.

With its prime location just a stone's throw away from Skipton's vibrant High Street and the train station, this property offers the perfect blend of tranquility and convenience. Don't miss the opportunity to make this well-presented family home your own and start creating lasting memories in this idyllic setting.

Nestled in the sought-after Burnside Crescent of Skipton, this charming mid-terrace house is a gem waiting to be discovered.

Handy for Skipton Train Station and the High Street.

On-Line-Bullet-Points

- A spacious family home
- Dining-kitchen with door onto garden
- Living room with multi-fuel-stove
- 2 double bedrooms + a single
- Modern house bathroom
- Beautiful enclosed rear garden
- Large off-street double parking bay
- Handy for town and train station