

# HUNTERS®

## EXCLUSIVE

**Pendle View, Long Preston**

**Asking Price £485,000**

**Property Images**

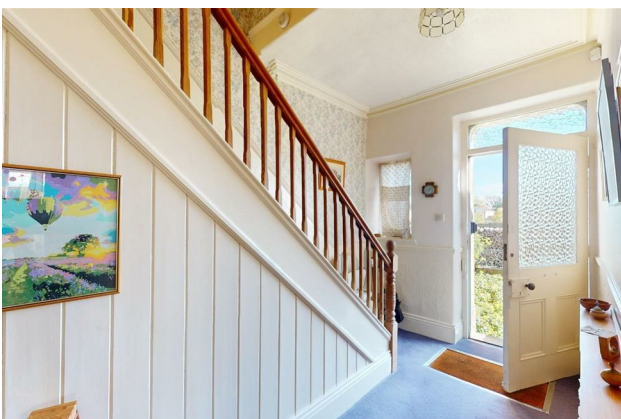




# HUNTERS<sup>®</sup>

## EXCLUSIVE

### Property Images



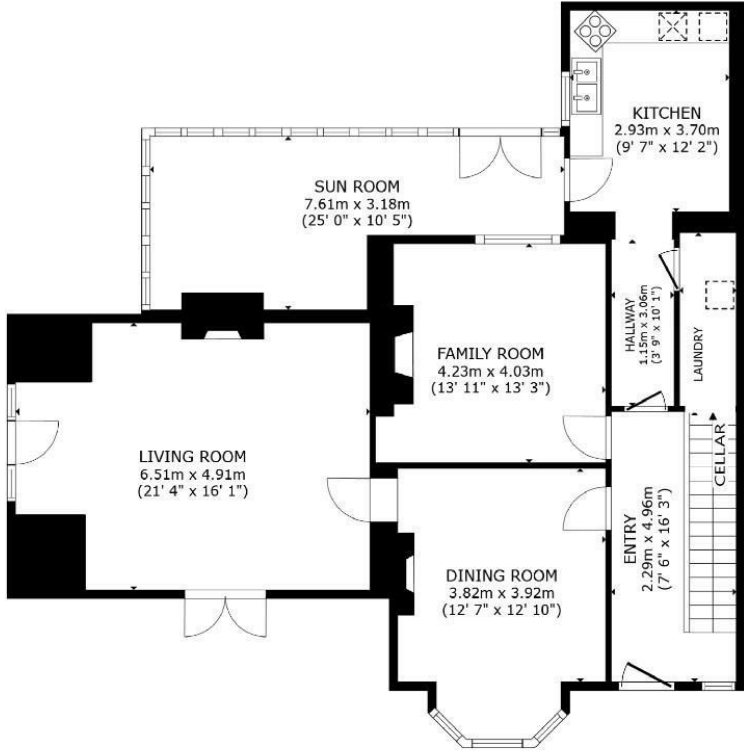


# HUNTERS<sup>®</sup>

## EXCLUSIVE

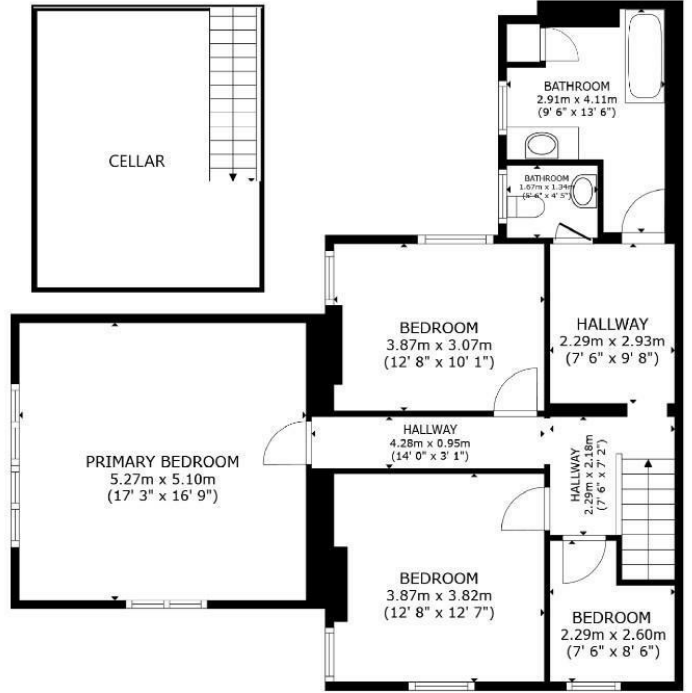
### Property Images



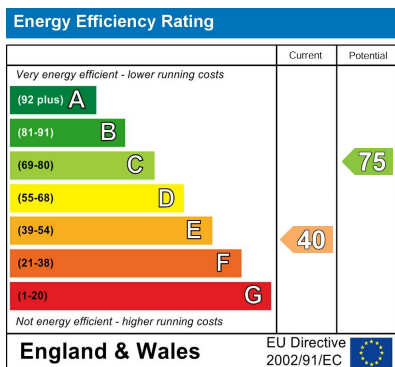


FLOOR 1

SIZES AND DIMENSIONS ARE APPROXIMATE, ACTUAL MAY VARY.



FLOOR 2



Nestled in the charming location of Pendle View, Long Preston, this Victorian terraced house is a true gem waiting to be polished.

Boasting an impressive 2500 sq ft of space, this property offers a unique opportunity to create your dream home in a tranquil setting. Having extensive gardens, garage and much more to offer.

As you step inside, you are greeted by a welcoming reception hall that leads you to a fitted kitchen, perfect for whipping up culinary delights. The dining room exudes elegance with its bay window and period-style fireplace, ideal for hosting dinner parties for friends and family. The spacious living room with superb period fire surround, is bathed in natural light, creating a warm and inviting atmosphere for relaxing evenings, and with a pleasant outlook onto the gardens.

For those who enjoy the outdoors, a delightful sunroom overlooks the expansive garden, providing a peaceful retreat to unwind and enjoy the beauty of nature. The cellar offers ample storage space, perfect for keeping your essentials organized and there is a laundry space just off the kitchen.

Upstairs, the property features 3 double bedrooms, including a generous principal bedroom with stunning garden views, and a 4th single bedroom. The house bathroom and separate WC add convenience to this charming abode, along with built-in storage for all your belongings.

Outside, the property truly shines with its attractive fore-garden leading to the front door and a generously sized rear garden bathed in sunlight. The garden boasts a lush lawn, mature trees, a kitchen garden area, and access to a single garage and a large stone-built outbuilding, offering endless possibilities for outdoor enjoyment and storage.

The garden wall close to the house could readily be removed to create 4 further parking spaces or a double garage.

In need of some updating, mainly cosmetic, this property presents a fantastic opportunity to create a bespoke living space tailored to your tastes and preferences. Don't miss out on the chance to make this Victorian terraced house your own slice of paradise in the heart of Long Preston.

#### On-Line-Bullet-Points

- A very grand Victorian family home
- Over 2500 sq ft of accommodation
- Large living room to dining room
- Kitchen, utility space & cellar
- 3 double bedrooms + a single
- Substantial sun room
- Large formal gardens + kitchen garden area
- Single garage + parking bay. Plenty of scope for further parking
- Close to train station and village store
- NO FORWARD CHAIN