

HUNTERS[®]

EXCLUSIVE

Oakfiled House, Hazelwood. Bolton Abbey. Skipton

Price £1,250,000

Property Images



HUNTERS[®]

EXCLUSIVE

Property Images

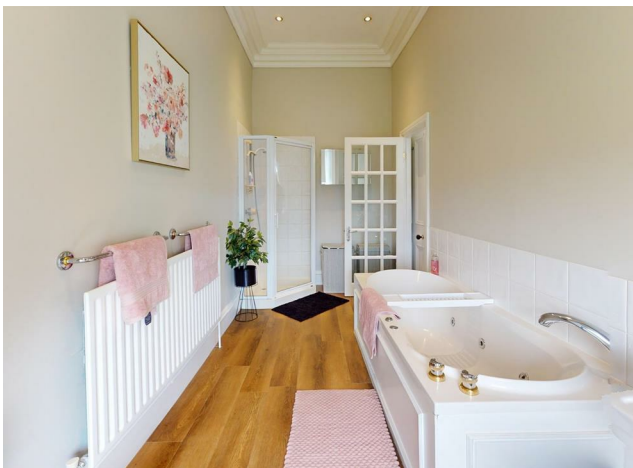


HUNTERS[®]

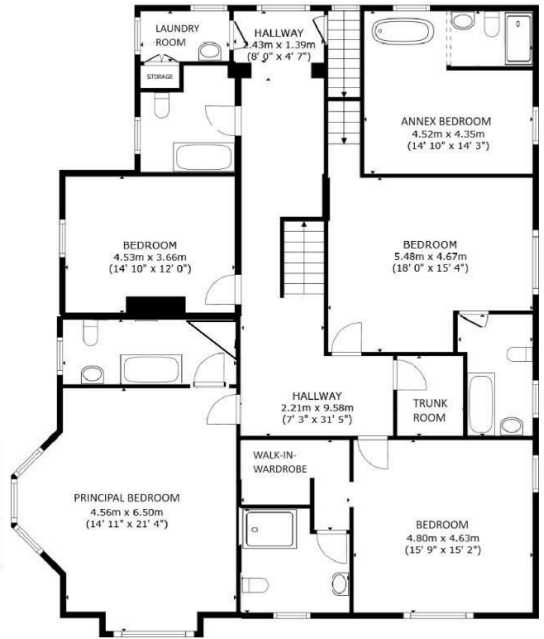
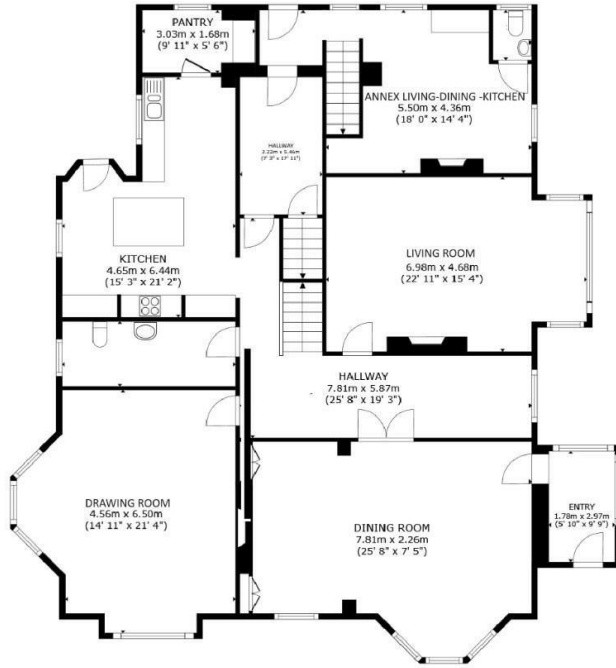
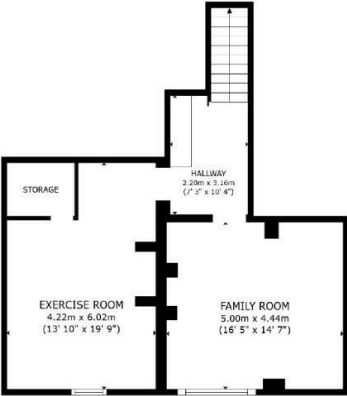
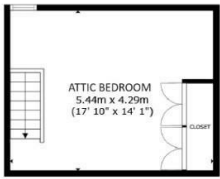
EXCLUSIVE

Property Images

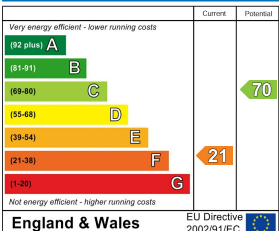








Energy Efficiency Rating



Nestled in the charming location of Hazlewood, Skipton, this detached Victorian Villa is a true gem waiting to be discovered. Boasting 4 reception rooms, 5 bedrooms, and 6 bathrooms, this property offers over 5000 square feet of luxurious living space.

The house has been meticulously refurbished, with attention to detail evident throughout. From the refurbished roof and leadwork to the updated electrics, boiler, radiators, new floorings throughout and a recently fitted kitchen and pantry, no expense has been spared in ensuring modern comfort along with fabulous Victorian character.

Step inside to find a grand reception hall, leading to a stunning Dining / Reception room, a spacious Drawing Room, and a cosy Living Room, all adorned with feature windows that flood the rooms with natural light. The 6 generous bedrooms, including 4 en-suites, provide ample space for the whole family, with the attic guest room offering versatility as an office or additional living space.

Outside, the extensive lawned gardens and large driveway offer parking for multiple vehicles, making hosting gatherings a breeze. The property's location within the Duke of Devonshire's Bolton Abbey Estate provides not only stunning views but also easy access to local attractions such as the Abbey, Beamsley Beacon, and the renowned Devonshire Arms Hotel. & Brasserie.

For families, the proximity to esteemed schools like Boyle and Petyt's Primary School and Upper Wharfedale Secondary School is a definite plus. Commutability to other top schools like Ermysteds and Skipton Girls' adds to the property's appeal.

Ideally situated on the side of A59, providing easy access to Harrogate, Skipton, Addingham, Ilkley, and the Wharfedale Valley. Ilkley and Skipton train stations are a 10 minute drive with direct trains to Leeds & London (from Skipton).

This superb, spacious family home is perfect for entertaining, featuring large spacious rooms and the addition of a gym and cinema room in the basement.

The separate annex is ideal for use as an Airbnb, a space for relatives, or for business purposes. Oakfield House combines Victorian charm with extensive modern updates, making it the perfect family home.

With the addition of a gym, cinema room, and a new annex perfect for guests or business purposes, Oakfield House seamlessly blends Victorian charm with modern amenities. Whether you're looking for a spacious family home or a property with potential for additional income, this Victorian Villa offers the best of both worlds.