

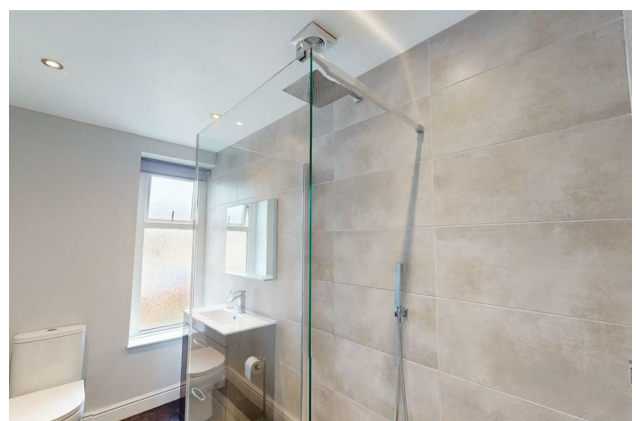
HUNTERS®

HERE TO GET *you* THERE

Haw Grove, Hellifield, Skipton

Asking Price £200,000

Property Images

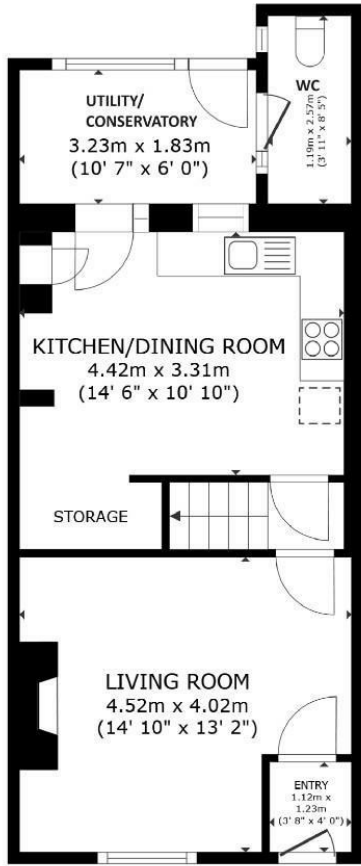


HUNTERS[®]

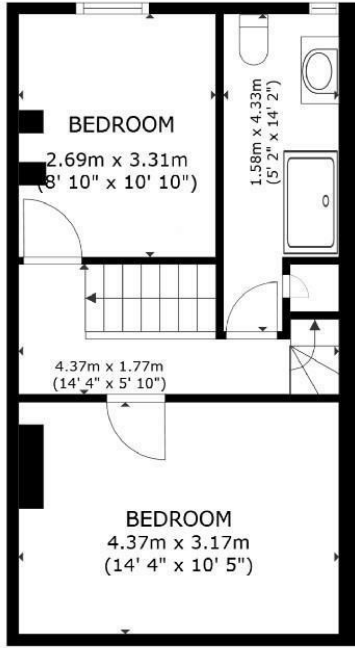
HERE TO GET *you* THERE

Property Images

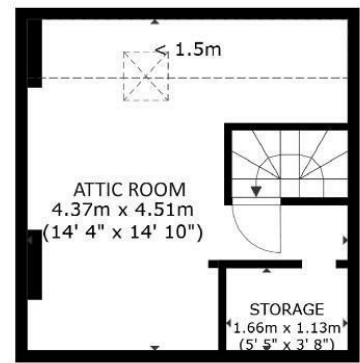




FLOOR 1



FLOOR 2



FLOOR 3



SIZE(S) AND DIMENSIONS ARE APPROXIMATE; ACTUAL MAY VARY.

Energy Efficiency Rating

	Current	Potential
<i>Very energy efficient - lower running costs</i>		
(92 plus) A		86
(81-91) B		
(69-80) C	72	
(55-68) D		
(39-54) E		
(21-38) F		
(1-20) G		
<i>Not energy efficient - higher running costs</i>		
England & Wales	EU Directive 2002/91/EC	



Step inside to find a welcoming living room featuring a wood-burning fire, perfect for creating a snug atmosphere on chilly evenings. The room is flooded with natural light during the summer months, creating a bright and airy space for relaxation.

The heart of the home lies in the spacious dining-kitchen, complete with a good range of units and work-surfaces. Adjacent to this area is a conservatory/utility room, ideal for laundry tasks, along with a convenient downstairs WC.

Venture upstairs to discover a generously sized double bedroom, a large single bedroom, and a modern house shower room. Additionally, the second floor boasts an attic hobby / games room with eaves storage and a useful walk-in cupboard.

Outside, the property offers on-street parking to the front and a quaint 'Yarden' to the rear, perfect for enjoying a morning coffee or alfresco dining. Situated just a short stroll away from village shops, a chippy, and the train station, convenience is at your doorstep.

Don't miss the opportunity to make this charming Victorian terrace house your new home sweet home.

On-Line-Bullet-Points

- On the level in this popular village
- 2 bedrooms plus attic / hobby room
- Spacious dining-kitchen
- Living room with wood-burner
- Modern shower room
- Train station, bus stop, shops and pub within a few minutes walk.
- Fabolous walks from the doorstep
- Skipton & Settle aprox 15 minutes by car / train