

HUNTERS®

HERE TO GET *you* THERE

Russell Street, Skipton

Price £159,500

Property Images

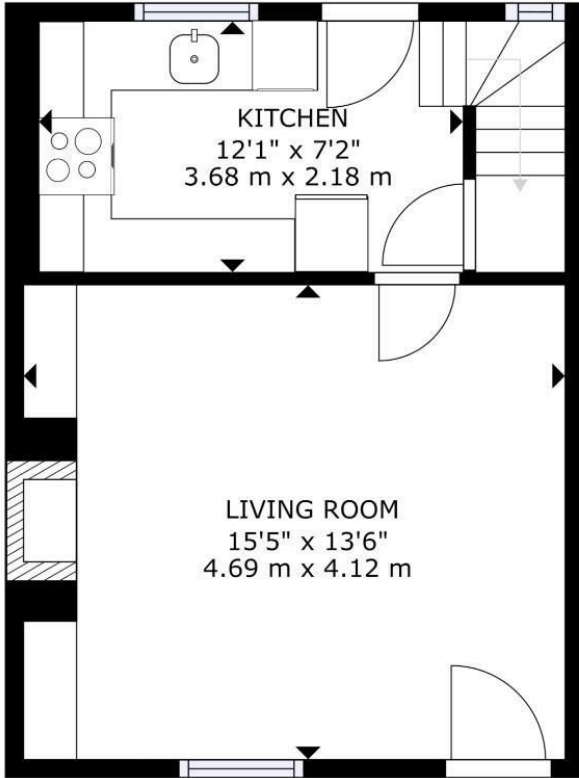


HUNTERS[®]

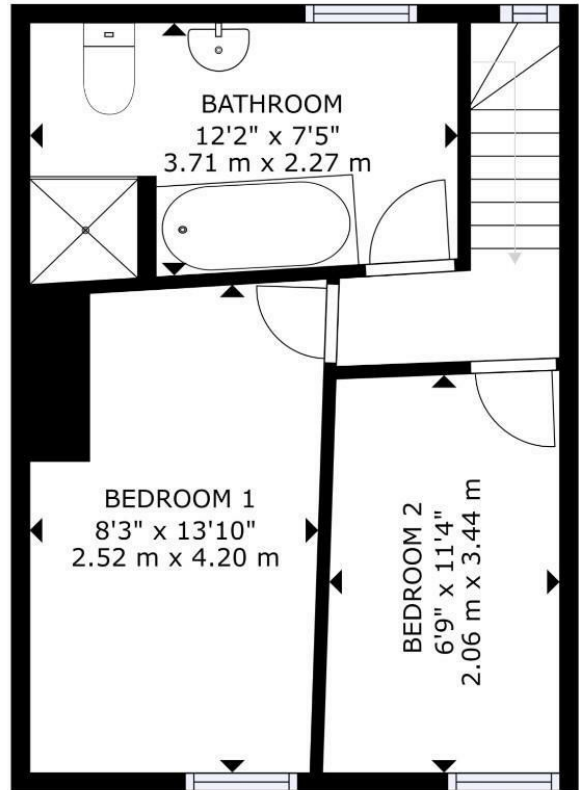
HERE TO GET *you* THERE

Property Images





FLOOR 1

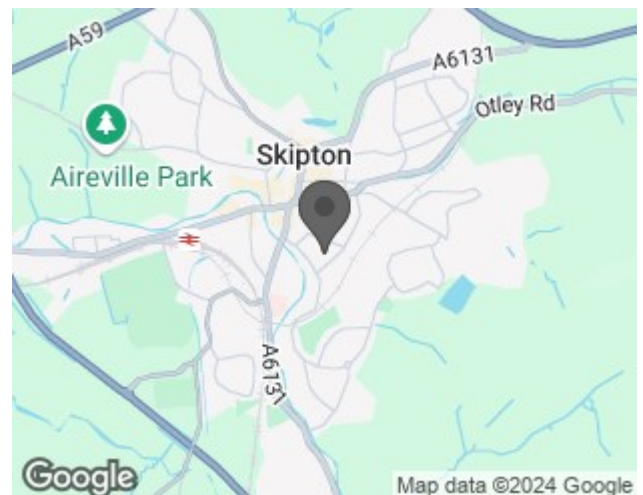


FLOOR 2

SIZES AND DIMENSIONS ARE APPROXIMATE, ACTUAL MAY VARY.

Energy Efficiency Rating

	Current	Potential
<i>Very energy efficient - lower running costs</i>		
(92 plus) A		89
(81-91) B		
(69-80) C		
(55-68) D	62	
(39-54) E		
(21-38) F		
(1-20) G		
<i>Not energy efficient - higher running costs</i>		
England & Wales <small>EU Directive 2002/91/EC</small>		



Its an old cliché but 'available again due to a time waster' Yes this property was SSTC for months only for the buyer to pull out at the very last minute. That is their loss and your gain.

Come and look round this charming Victorian mid-terrace house located on Russell Street in the heart of Skipton. This delightful property boasts a perfect blend of historical charm and modern convenience, making it an ideal choice for first-time buyers looking to settle down in a vibrant town center location.

As you step inside, you are greeted by a cosy reception room, two well-appointed bedrooms, bathroom

Being a Victorian terraced home, this property exudes character and warmth, with period features adding to its unique appeal.

A spacious square shaped living room, with a double glazed window to the front, recessed alcoves with fitted cupboards and shelving, including a television area, and having ample space for a couple of sofas and associated furniture.

The breakfast-kitchen is set to the rear of the property, and features a range of shaker style base and wall units, and with plumbing and space for a washer / dryer and fridge / freezer.

Fitted appliances include an electric hob, under-counter oven and grill, and with matching canopy hood and splash-back. In addition there is an under-stairs pantry-cupboard providing further storage. A double glazed window and matching UPVC door opens onto the spacious Yarden, which catches the afternoon sun.

To the first floor:-

The principal bedroom with double glazed window to the street , provides ample space for a king-size bed and bedroom furniture. Bedroom 2 is a smaller double bedroom or a good sized three-quarter bedroom again with double glazed window looking out onto Russell Street. The bathroom is of good proportions, and with the added advantage of having a separate shower enclosure with thermostatic shower unit, full-size bath, WC, and wash basin. A built-in over-stairs cupboard provides linen and cosmetics storage, and a further cupboard houses the modern IDEAL Combi boiler.

The town center location ensures easy access to a variety of amenities, including shops, restaurants, and leisure facilities. Additionally, the proximity to bus and train services makes commuting a breeze for those working or studying in nearby areas.

Whether you are looking to take your first step onto the property ladder or seeking a charming home in a convenient location, this Victorian mid-terrace house on Russell Street offers a wonderful opportunity.

On-Line-Bullet-Points

- No forward Chain. 3D Virtual Viewing Tour
- Spacious square shaped living room
- Breakfast-kitchen + pantry
- Large Yarden to the rear with afternoon / evening sun
- Large double + smaller double / 3/4 bedroom
- Spacious bathroom with large shower enclosure + a bath
- On street parking
- Handy for town and bus / train stations
- GAS heating + Double glazed
- Mortgage advice available