

HUNTERS®

HERE TO GET *you* THERE

Russell Street, Skipton

Price £159,500

Property Images

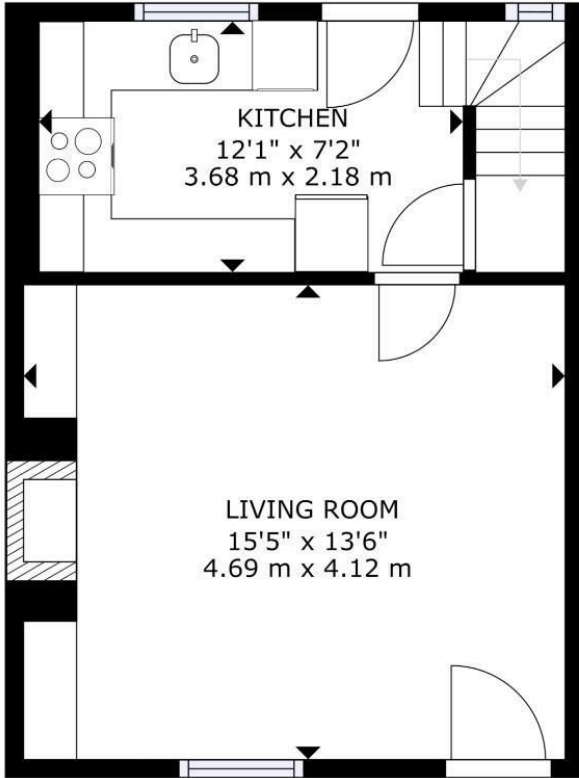


HUNTERS[®]

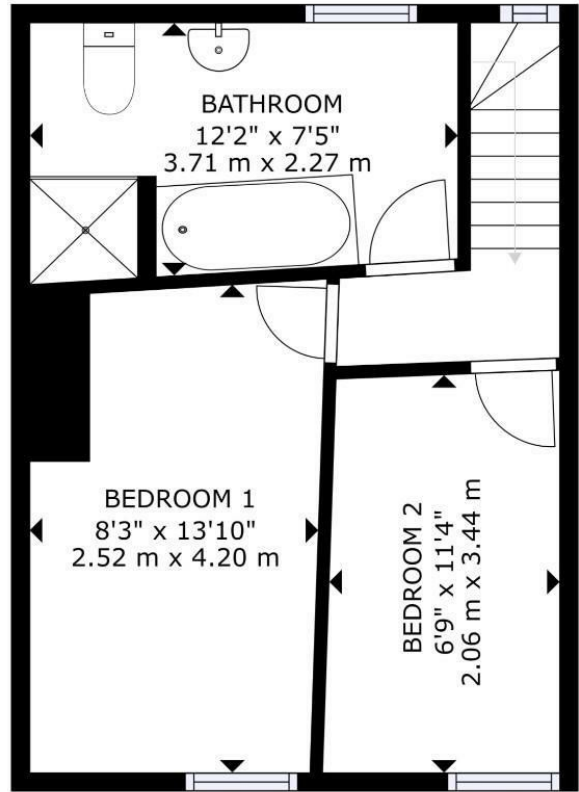
HERE TO GET *you* THERE

Property Images





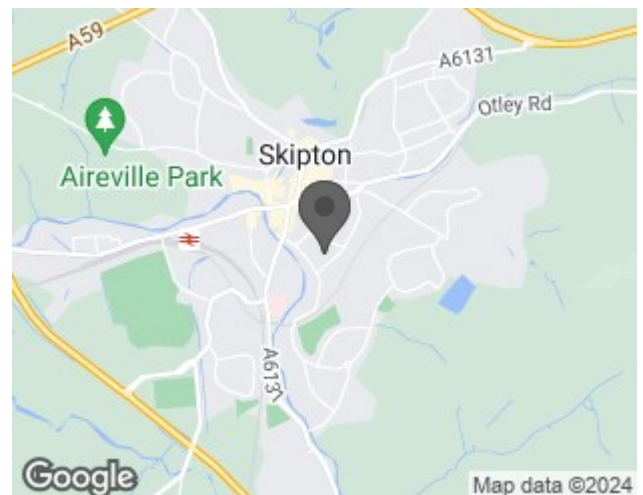
FLOOR 1



FLOOR 2

SIZES AND DIMENSIONS ARE APPROXIMATE, ACTUAL MAY VARY.

Energy Efficiency Rating	
Current	Potential
<i>Very energy efficient - lower running costs</i>	
(92 plus) A	89
(81-91) B	
(69-80) C	
(55-68) D	
(39-54) E	
(21-38) F	
(1-20) G	
<i>Not energy efficient - higher running costs</i>	
62	
England & Wales EU Directive 2002/91/EC	



Welcome to this charming Victorian mid-terrace house located on Russell Street in the heart of Skipton. This delightful property boasts a perfect blend of historical charm and modern

A spacious square shaped living room, with a double glazed window to the front, recessed alcoves with fitted cupboards and shelving, including a television area, and having ample space for a couple of sofas and associated furniture.

The breakfast-kitchen is set to the rear of the property, and features a range of shaker style base and wall units, and with plumbing and space for a washer / dryer and fridge / freezer.

Fitted appliances include an electric hob, under-counter oven and grill, and with matching canopy hood and splash-back. In addition there is an under-stairs pantry-cupboard providing further storage. A double glazed window and matching UPVC door opens onto the spacious Yarden, which catches the afternoon sun.

To the first floor:-

The principal bedroom with double glazed window to the street , provides ample space for a king-size bed and bedroom furniture. Bedroom 2 is a smaller double bedroom or a good sized three-quarter bedroom again with double glazed window looking out onto Russell Street. The bathroom is of good proportions, and with the added advantage of having a separate shower enclosure with thermostatic shower unit, full-size bath, WC, and wash basin. A built-in over-stairs cupboard provides linen and cosmetics storage, and a further cupboard houses the modern IDEAL Combi boiler.

Russell Street is set in the heart of the town and with the bus station being a five minute stroll and the train station 10 minutes.

On-Line-Bullet-Points

- No forward Chain. 3D Virtual Viewing Tour
- Spacious square shaped living room
- Breakfast-kitchen + pantry
- Large Yarden to the rear with afternoon / evening sun
- Large double + smaller double / 3/4 bedroom
- Spacious bathroom with large shower enclosure + a bath
- On street parking
- Handy for town and bus / train stations
- GAS heating + Double glazed
- Mortgage advice available