



colin ellis

Strawberry Court, Scarborough, YO12 5QU

A well presented one bedroom first floor leasehold apartment located in the popular Strawberry Court development, designed exclusively for residents aged 55 and over. The apartment benefits from recent improvement works, is in good condition throughout, has a balcony overlooking the communal gardens and offers no onward chain, making it an ideal move in ready home.

Strawberry Court offers a supportive and peaceful community environment with a secure and well maintained setting. Early viewing is recommended.

Guide Price £90,000



1



1



1



C

ABOUT STRAWBERRY COURT

Strawberry Court consists of 52 one and two bed properties, including bungalows, retirement apartments and cottages. Facilities available include a lounge, conservatory and shared gardens, as well as monthly social events. A local manager looks after buildings and grounds maintenance and repairs, as well as offering further advice and support as required. Additional help and assistance is available via Hanover's 24 hour emergency call system.

LIVING ROOM

2.84 x 5.49 (9'3" x 18'0")

Spacious living room with doors out onto balcony with views over the communal gardens.

KITCHEN

1.84 x 2.97 (6'0" x 9'8")

Modern kitchen with breakfast bar table.

BEDROOM

2.53 x 4.82 (8'3" x 15'9")

Double bedroom with fitted wardrobes.

BATHROOM

1.70 x 1.90 (5'6" x 6'2")

Modern bathroom with bath and shower over.

TENURE

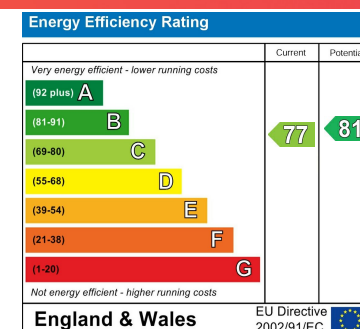
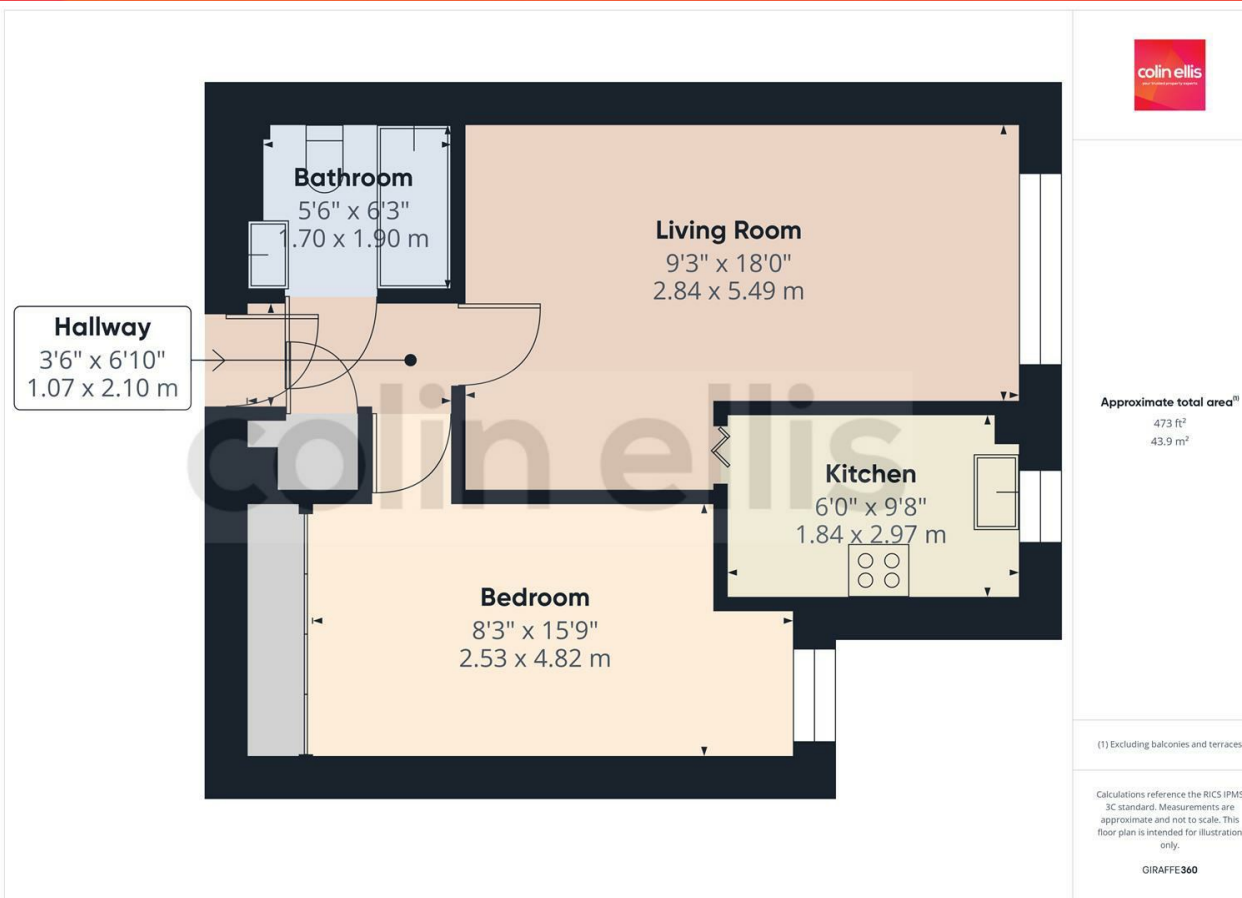
Our vendor has informed us of the following:

- * Maintenance fee £3,120.00 a year
- * Pets are allowed
- * No AST's
- * No Holiday lets

Please note all matters of tenure are subject to verification and clarification in a contract of sale







Strawberry Court - 18716074
Council Tax Band -
Tenure - Leasehold

DISCLAIMER: The agent has not tested any apparatus, fittings or services and so cannot verify they are in working order. The buyer is advised to obtain verification from their own solicitor or surveyor. Occasionally a wide angle lens may be used. This property was inspected by COLIN ELLIS PROPERTY SERVICES. We always try to make our sales particulars accurate and reliable, but if there is any point which is of particular importance to you, especially if you are considering travelling some distance to view the property, please do not hesitate to contact this office, we will be pleased to check the information for you. Council Tax Band ratings have been provided by DirectGov.



Tel: 01723 363565
E-mail: info@colinellis.co.uk

RESIDENTIAL & COMMERCIAL SALES
LETTINGS CHARTERED SURVEYOR

See all our properties online
www.colinellis.co.uk