



colin ellis

Norwood Street, Scarborough, YO12 7EQ

This delightful terraced house offers a perfect blend of modern living and original character. Spanning three floors, the property boasts four spacious bedrooms, making it an ideal family home or those seeking some extra space.

Upon entering, you are greeted by two inviting reception rooms and a modern kitchen leading out to the rear yard. The modern touches throughout the home are complemented by some original features, adding a unique charm. The property also benefits from a renovated bathroom, which features a luxurious roll-top bath and the added convenience of a downstairs WC.

With its prime location in Scarborough, residents will enjoy easy access to local amenities, schools, and the stunning coastline. Don't miss the opportunity to make this lovely home your own.

Guide Price £170,000



4



1



2



D

PROPERTY DESCRIPTION

The accommodation briefly comprises of an entrance vestibule and entrance hallway with staircase leading to the first floor and doors to the bay fronted living room with sliding doors into the dining room with log burner. To the ground floor is also a modern kitchen, utility area, WC and door leading onto the rear yard. To the first floor a landing which has doors leading to two bedrooms, a refurbished bathroom and separate WC. A set of stairs provides access to the second floor landing and two further bedrooms. The property also benefits from gas central heating and double glazing. Externally, the property benefits from a forecourted frontage and an enclosed rear yard.

LIVING ROOM

3.75 x 3.65 (12'3" x 11'11")

DINING ROOM

2.58 x 3.67 (8'5" x 12'0")

KITCHEN

2.26 x 3.66 (7'4" x 12'0")

UTILITY AREA

WC

FIRST FLOOR

BEDROOM

3.17 x 3.64 (10'4" x 11'11")

BEDROOM

2.73 x 3.68 (8'11" x 12'0")

BATHROOM

1.55 x 2.72 (5'1" x 8'11")

WC

2.16 x 0.94 (7'1" x 3'1")

SECOND FLOOR

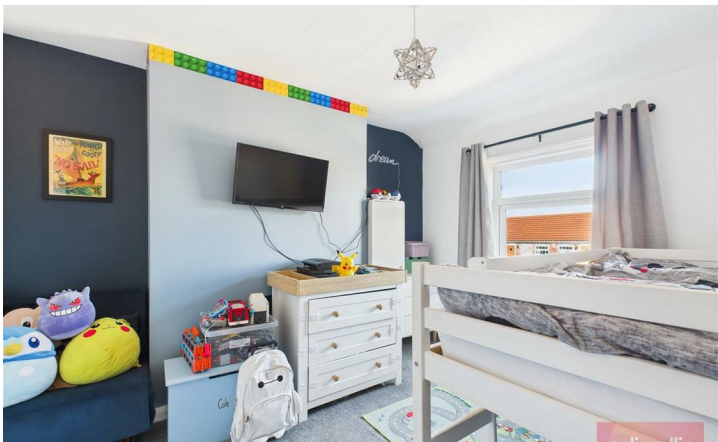
BEDROOM

4.93 x 3.67 (16'2" x 12'0")

BEDROOM

3.11 x 3.67 (10'2" x 12'0")







Approximate total area⁽¹⁾
 1168.85 ft²
 108.59 m²

(1) Excluding balconies and terraces

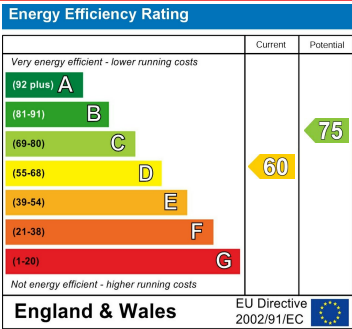
While every attempt has been made to ensure accuracy, all measurements are approximate, not to scale. This floor plan is for illustrative purposes only.

Calculations are based on RICS IPMS 3C standard.

GIRAFFE360

Norwood Street - 18698929
Council Tax Band - B
Tenure - Freehold

DISCLAIMER: The agent has not tested any apparatus, fittings or services and so cannot verify they are in working order. The buyer is advised to obtain verification from their own solicitor or surveyor. Occasionally a wide angle lens may be used. This property was inspected by COLIN ELLIS PROPERTY SERVICES. We always try to make our sales particulars accurate and reliable, but if there is any point which is of particular importance to you, especially if you are considering travelling some distance to view the property, please do not hesitate to contact this office, we will be pleased to check the information for you. Council Tax Band ratings have been provided by DirectGov.



Tel: 01723 363565
E-mail: info@colinellis.co.uk

RESIDENTIAL & COMMERCIAL SALES
LETTINGS CHARTERED SURVEYOR

See all our properties online
www.colinellis.co.uk