

**\* A well presented property benefitting from THREE bedrooms and TWO ALLOCATED PARKING SPACES, briefly comprising lounge, kitchen/diner, bathroom & enclosed rear garden \***

**The Accommodation Comprises:**

**Entrance**  
UPVC double glazed door to front elevation.

**Entrance Hall**  
Stairs to First Floor Landing, tiled flooring.

**WC**  
UPVC double glazed window to front elevation, low level WC, wash hand basin, vinyl flooring, radiator.

**Lounge 14' 1" x 12' 2" (4.29m x 3.71m) max**  
UPVC double glazed window to front elevation, radiator, laminate flooring, double doors into:

**Kitchen/Dining Room 9' 10" x 15' 6" (2.99m x 4.72m)**  
UPVC double glazed window to rear elevation, UPVC double doors to garden, fitted with a range of base cupboards and matching eye level units, stainless steel sink and drainer unit with mixer tap, work surface over, tiled splashbacks, space for cooker, washing machine, dishwasher and fridge/freezer, central heating boiler, radiator, spacious storage cupboard.

**First Floor Landing**  
Airing cupboard, access to loft space, doors to:

**Bedroom One 8' 7" x 15' 6" (2.61m x 4.72m)**  
Two UPVC double glazed windows to front elevation, built-in wardrobes, storage recess, radiator.

**Bedroom Two 8' 11" x 9' 3" (2.72m x 2.82m)**  
UPVC double glazed window to rear elevation, radiator.

**Bedroom Three 8' 10" x 5' 11" (2.69m x 1.80m)**  
UPVC double glazed window to rear elevation, radiator.

**Bathroom**  
Bath with shower over, wash hand basin, low level WC, extractor fan, part-tiled walls, laminate flooring.

**Outside**  
To the front is a small gravelled area and path to front door. The rear garden is laid to lawn with a decking area, and garden shed.

There are two allocated parking spaces to the front of the property.

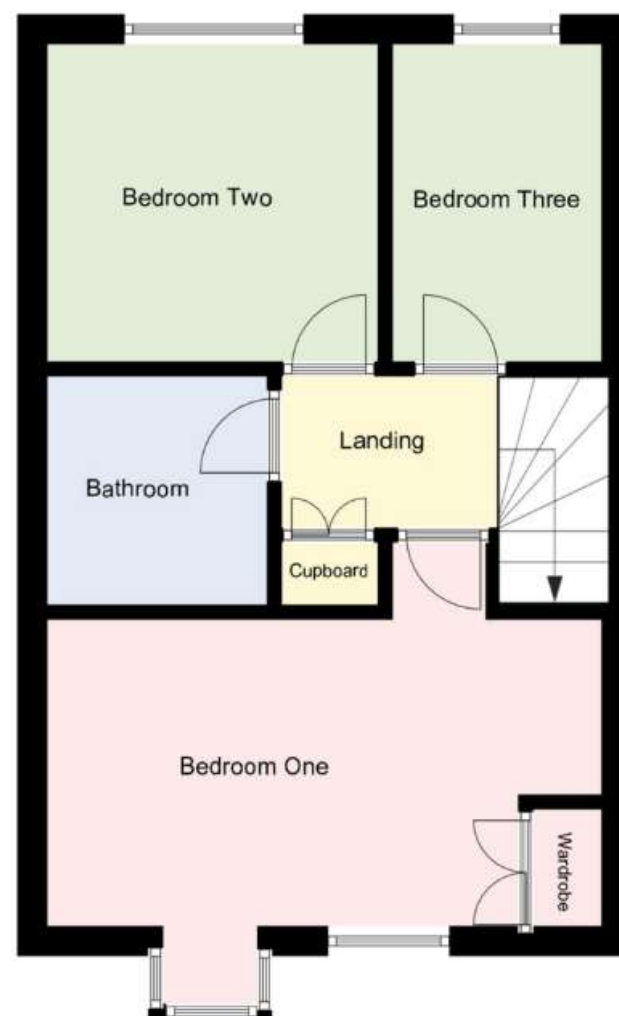
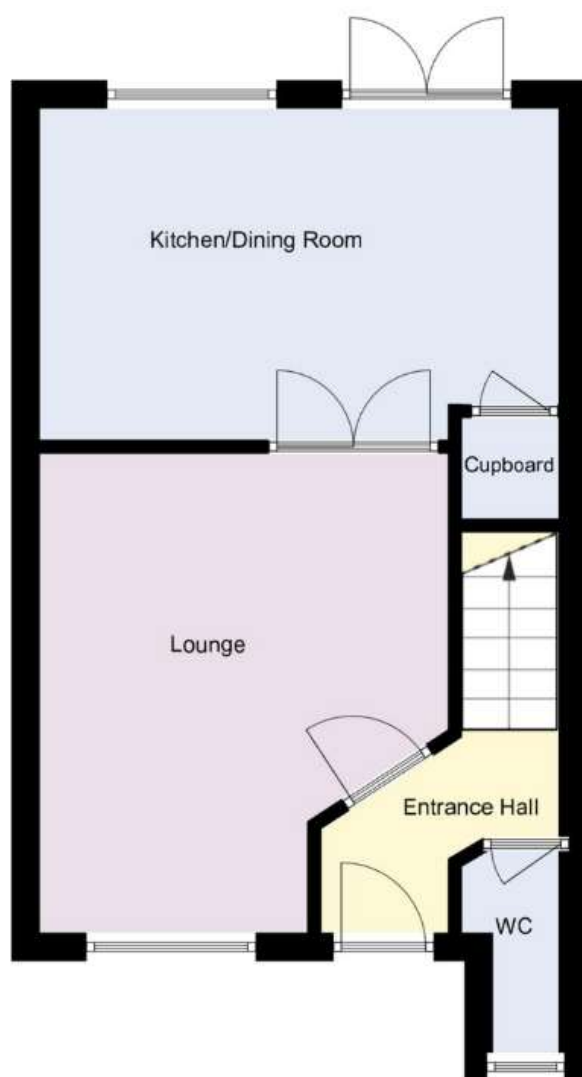
**General Information**  
Construction: Traditional  
Water Supply: Portsmouth Water  
Electric Supply: Mains  
Gas Supply: Mains  
Sewerage: Mains  
Mobile & Broadband coverage: <https://checker.ofcom.org.uk>  
Flood risk: [www.gov.uk/check-long-term-flood-risk](http://www.gov.uk/check-long-term-flood-risk)  
Tenure: Freehold  
Council Tax Band: C

**Agent's Note:**  
The property benefits from leased solar panels, further information can be provided on request.



Awaiting EPC





**Disclaimer:** These particulars are set out as a general outline in accordance with the Consumer Protection from Unfair Trading Regulations 2008 (CPR's) and Business Protection from Misleading Marketing Regulations 2008 (BPR's) only for the guidance of intending purchasers or lessees, and do not constitute any part of an offer or contract. Details are given without any responsibility, and any intending purchasers, lessees or third parties should not rely on them as statements or representations of fact, but must satisfy themselves by inspection or otherwise as to the correctness of each of them.

We have not carried out a structural survey and the services, appliances and specific fittings have not been tested. All photographs, measurements, floor plans and distances referred to are given as a guide only and should not be relied upon for the purchase of carpets or any other fixtures or fittings. Gardens, roof terraces, balconies and communal gardens as well as tenure and lease details cannot have their accuracy guaranteed for intending purchasers. Lease details, service ground rent (where applicable) are given as a guide only and should be checked and confirmed by your solicitor prior to exchange of contracts.

No person in the employment of Fenwicks Estates Ltd has any authority to make any representation or warranty whatever in relation to this property. Purchase prices, rents or other prices quoted are correct at the date of publication and, unless otherwise stated, exclusive of VAT.

**Data Protection:** We retain the copyright in all advertising material used to market this Property.

**Money Laundering Regulations 2017:** Intending purchasers will be required to produce identification documentation once an offer is accepted.



\*DRAFT DETAILS\*

£259,995  
Ensign Drive, Gosport, PO13 9XE

Fenwicks - Gosport Office: 02392 529889 [www.fenwicks-estates.co.uk](http://www.fenwicks-estates.co.uk)

**Fenwicks**  
THE INDEPENDENT ESTATE AGENT