

*** A well presented and much improved Semi-Detached family home situated in a popular location close to schools, shops & transport links. The property benefits from three bedrooms, modern fitted kitchen and bathroom, conservatory, garage to rear of garden with parking in front and rear pedestrian gate.**
*** A must view to appreciate. ***

The Accommodation Comprises:
Newly-fitted composite front door to:

Entrance Porch
Space for coats and shoes, UPVC double glazed door to rear garden, opening to:

Kitchen 10' 7" x 10' 6" (3.22m x 3.20m)
UPVC double glazed window to front elevation, recently re-fitted with a modern range of base cupboards and matching eye-level units, roll-top worksurface, sink unit with mixer tap, integrated electric oven and grill, integrated electric hob with extractor hood over, integrated fridge/freezer, space and plumbing for washing machine and dishwasher, under-stairs storage cupboard, door to:

Lounge/Diner 21' 4" x 20' 4" (6.50m x 6.19m)
UPVC double glazed window to front elevation overlooking the attractive communal gardens, stairs to First Floor, feature fireplace, two radiators, double glazed sliding doors to:

Conservatory 19' 6" x 8' 11" (5.94m x 2.72m)
UPVC double glazed windows to rear and side elevations, UPVC double glazed sliding doors to rear garden, polycarbonate roof, radiator.

First Floor Landing
UPVC double glazed window to side elevation, access to loft space, cupboard housing combination boiler, radiator.

Bedroom One 12' 9" x 9' 11" (3.88m x 3.02m)
UPVC double glazed window to rear elevation, radiator.

Bedroom Two 10' 3" x 10' 0" (3.12m x 3.05m)
UPVC double glazed window to front elevation, UPVC double glazed door to balcony, radiator.

Bedroom Three 9' 7" x 6' 5" (2.92m x 1.95m)
UPVC double glazed window to front elevation, radiator.

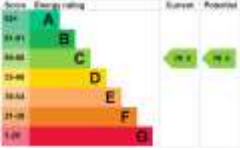
Bathroom 9' 11" x 5' 0" (3.02m x 1.52m)
Obscured UPVC double glazed window to rear elevation, recently re-fitted with low level WC with concealed cistern, wash hand basin set in vanity unit with mixer tap, panelled bath with mixer tap, rainfall shower head over, additional hand held shower head, storage cupboard, ladder-style radiator.

Outside
There are well-maintained communal gardens to the front of the property.

The rear garden is enclosed by panel fencing, mainly laid to lawn with patio area, gate providing rear pedestrian access, courtesy door to garage with up and over vehicular door and parking space in front.

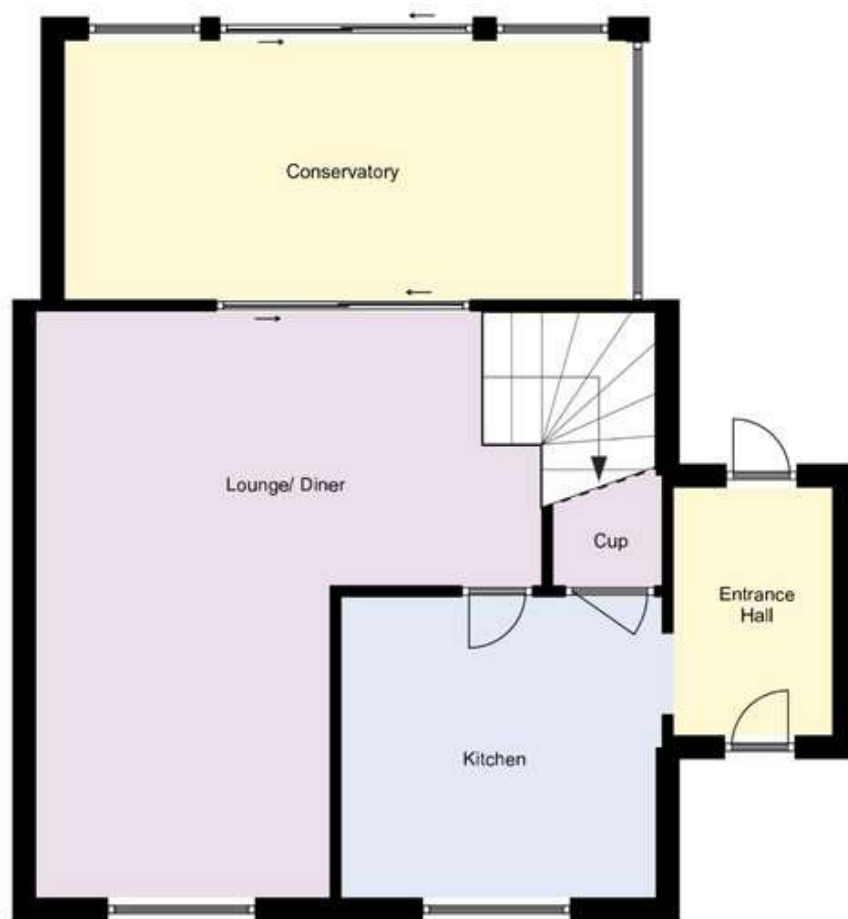
The property benefits from recently added cladding to front and rear as well as having a new roof in the last three years.

General Information:
Construction: Traditional
Water Supply: Portsmouth Water
Electric Supply: Mains
Gas Supply: Mains Sewerage: Mains
Mobile & Broadband coverage: <https://checker.ofcom.org.uk>
Flood risk: www.gov.uk/check-long-term-flood-risk
Tenure: Leasehold
Council Tax Band: C



Agents Note:
The vendor informs us of the following information which should be verified during the conveyancing process:
Ground rent: £5 per annum
Service charge: £68 per calendar month
Length of Lease: 999 years from new





Disclaimer: These particulars are set out as a general outline in accordance with the Consumer Protection from Unfair Trading Regulations 2008 (CPR's) and Business Protection from Misleading Marketing Regulations 2008 (BPR's) only for the guidance of intending purchasers or lessees, and do not constitute any part of an offer or contract. Details are given without any responsibility, and any intending purchasers, lessees or third parties should not rely on them as statements or representations of fact, but must satisfy themselves by inspection or otherwise as to the correctness of each of them.

We have not carried out a structural survey and the services, appliances and specific fittings have not been tested. All photographs, measurements, floor plans and distances referred to are given as a guide only and should not be relied upon for the purchase of carpets or any other fixtures or fittings. Gardens, roof terraces, balconies and communal gardens as well as tenure and lease details cannot have their accuracy guaranteed for intending purchasers. Lease details, service ground rent (where applicable) are given as a guide only and should be checked and confirmed by your solicitor prior to exchange of contracts.

No person in the employment of Fenwicks Estates Ltd has any authority to make any representation or warranty whatever in relation to this property. Purchase prices, rents or other prices quoted are correct at the date of publication and, unless otherwise stated, exclusive of VAT.

Data Protection: We retain the copyright in all advertising material used to market this Property.

Money Laundering Regulations 2017: Intending purchasers will be required to produce identification documentation once an offer is accepted.



£315,000

Chichester Close, Peel Common, Gosport, PO13 0QH

Fenwicks - Gosport Office: 02392 529889 www.fenwicks-estates.co.uk

Fenwicks
THE INDEPENDENT ESTATE AGENT

DRAFT DETAILS