

Situated in a sought after road within Alverstoke is this substantial detached house occupying a generous size plot. The property benefits from accommodation over three floors, indoor pool and generous sociable kitchen/diner.

Entrance Porch:-

UPVC double glazed window to front elevation, composite front door to;

Entrance Hallway:-

Stairs to first floor, door to;

Cloakroom:-

Close coupled WC and wash hand basin.

Dining Room:- 18' 4" x 11' 4" (5.58m x 3.45m) maximum measurements

Arch and double opening glazed doors to kitchen, door to utility, storage cupboard.

Lounge:- 17' 11" x 12' 4" (5.46m x 3.76m)

UPVC double glazed window to front elevation, fireplace, laminate flooring, double opening doors to kitchen/diner.

Kitchen/Breakfast/Family Room:- 35' 4" x 19' 6" (10.76m x 5.94m)

Tiled flooring, windows to rear and side elevations, inset spotlighting, fitted with a range of base and eye level units, roll top worksurface incorporating breakfast bar, island unit, sink unit with mixer tap, range-style cooker with extractor fan over, space for American-style fridge freezer, integrated dishwasher, lift to main bedroom, door to;

Cloakroom:-

Close coupled WC.

Utility Room:- 11' 0" x 6' 8" (3.35m x 2.03m)

Window to rear elevation and door to;

Study:- 16' 4" x 7' 2" (4.97m x 2.18m)

Window to front elevation, courtesy door to garage, door to;

Cloakroom:-

Close coupled WC.

Conservatory:- 17' 5" x 11' 2" (5.30m x 3.40m)

Windows and double opening doors to rear garden and pool room.

Pool Room:- 35' 8" x 17' 9" (10.86m x 5.41m)

Windows and double opening doors to rear garden, polycarbonate roof, 7m swimming pool.

First Floor Landing:-

Stairs to second floor, window to front elevation.

Bedroom One:- 19' 9" x 17' 0" (6.02m x 5.18m) maximum measurements

Lift from kitchen, inset spotlighting, window to rear elevation, walk in wardrobe, door to;

En Suite:- 9' 8" x 3' 8" (2.94m x 1.12m)

Double shower cubicle, wash hand basin set in vanity drawer unit, close coupled WC, obscured window to rear elevation.

Bedroom Two:- 17' 6" x 14' 2" (5.33m x 4.31m) maximum measurements

Window to rear elevation, door to;

En Suite:- 8' 5" x 2' 5" (2.56m x 0.74m)

Shower cubicle, close coupled WC, wash hand basin.

Bedroom Four:- 17' 10" x 12' 5" (5.43m x 3.78m)

Window to front elevation, built in wardrobes.

Bedroom Five:-

Originally two separate bedrooms, windows to front and side elevations, clothes hanging rails.

Bathroom:- 8' 5" x 8' 0" (2.56m x 2.44m)

Obscured window to rear elevation, close coupled WC, roll top bath, pedestal wash hand basin, double shower cubicle.

Second Floor Landing:-

Velux window.

Bedroom Three:- 16' 7" x 12' 9" (5.05m x 3.88m)

Two Velux windows, window to rear elevation.

Dressing Room:- 10' 0" x 7' 0" (3.05m x 2.13m)

Velux window, clothes hanging rail, inset spotlighting, door to;

Shower Room:- 8' 9" x 5' 4" (2.66m x 1.62m)

Close coupled WC, wash hand basin, shower cubicle.

Outside:-

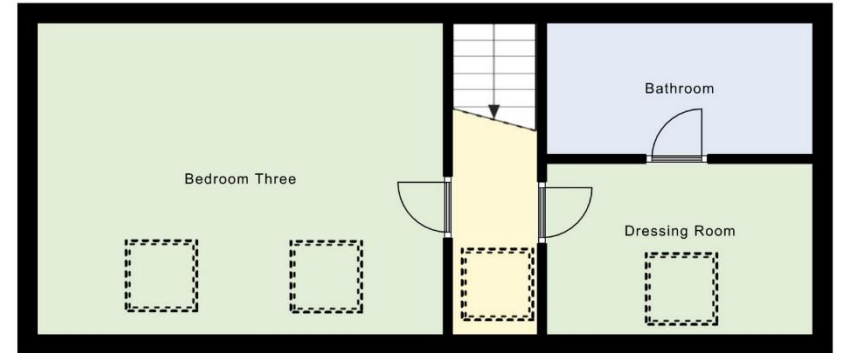
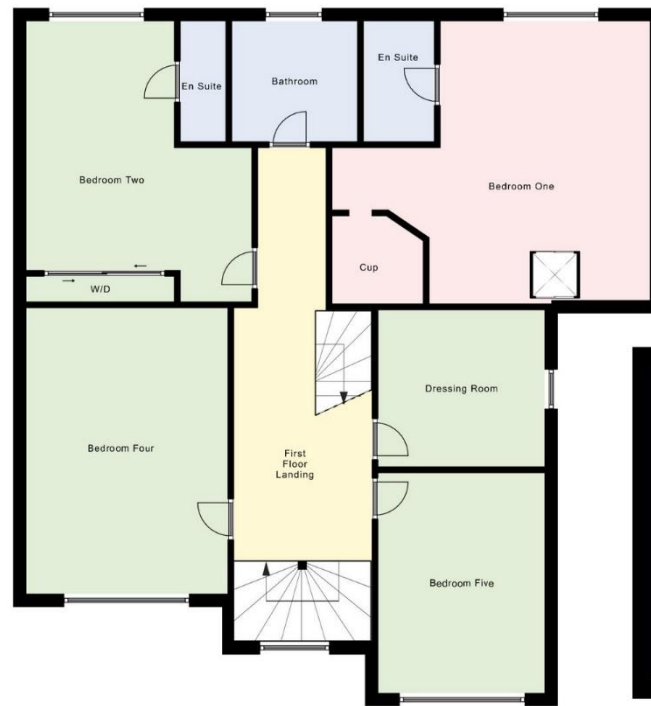
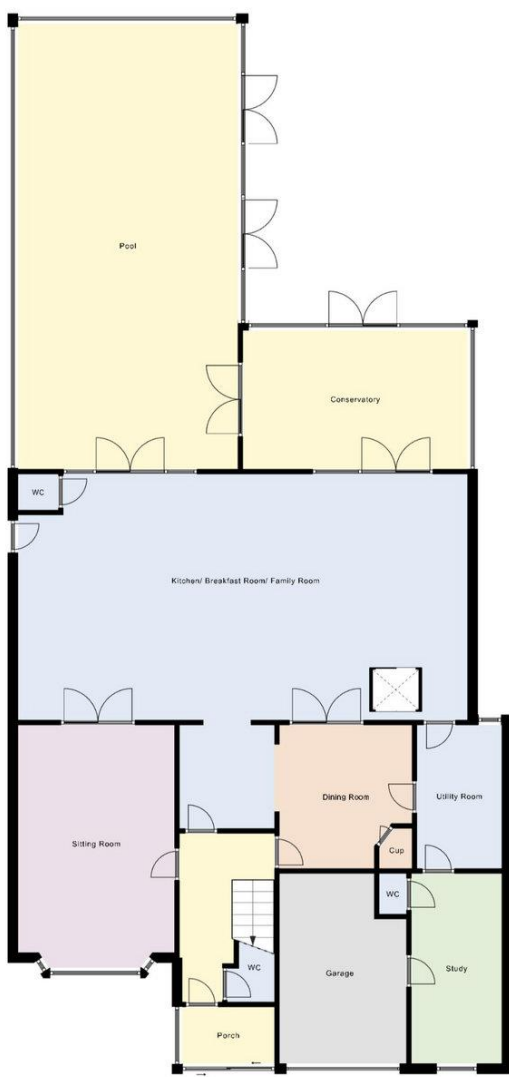
The rear garden is a delightful feature of the home which is laid to artificial grass with mature trees to borders. The rear garden also benefits from side access and a summer house which is currently used as a home gym. To front of the property there is block paved driveway providing off-road parking, with access to garage via up and over door and electric car changing port.



Tenure: Freehold

Council Tax Band: F

Score	Energy rating	Current	Potential
92+	A		
81-91	B		
69-80	C	76 C	80 C
55-68	D		
39-54	E		
21-38	F		
1-20	G		



Disclaimer: These particulars are set out as a general outline in accordance with the Consumer Protection from Unfair Trading Regulations 2008 (CPR's) and Business Protection from Misleading Marketing Regulations 2008 (BPR's) only for the guidance of intending purchasers or lessees, and do not constitute any part of an offer or contract. Details are given without any responsibility, and any intending purchasers, lessees or third parties should not rely on them as statements or representations of fact, but must satisfy themselves by inspection or otherwise as to the correctness of each of them.

We have not carried out a structural survey and the services, appliances and specific fittings have not been tested. All photographs, measurements, floor plans and distances referred to are given as a guide only and should not be relied upon for the purchase of carpets or any other fixtures or fittings. Gardens, roof terraces, balconies and communal gardens as well as tenure and lease details cannot have their accuracy guaranteed for intending purchasers. Lease details, service ground rent (where applicable) are given as a guide only and should be checked and confirmed by your solicitor prior to exchange of contracts.

No person in the employment of Fenwicks Estates Ltd has any authority to make any representation or warranty whatever in relation to this property. Purchase prices, rents or other prices quoted are correct at the date of publication and, unless otherwise stated, exclusive of VAT.

Data Protection: We retain the copyright in all advertising material used to market this Property.

Money Laundering Regulations 2017: Intending purchasers will be required to produce identification documentation once an offer is accepted.



£850,000

Western Way, Alverstoke, Gosport, PO12 2NE

DRAFT DETAILS

Fenwicks - Gosport Office: 02392 529889 www.fenwicks-estates.co.uk

Fenwicks

THE INDEPENDENT ESTATE AGENT