

A superb and individual detached residence situated in a sought after road within Alverstoke and benefitting from four bedrooms with three en-suites, outdoor heated swimming pool and double garage. An internal viewing is recommended to appreciate the accommodation on offer.

Entrance Hallway:-

Original wood panelling to wall, stairs to first floor.

Cloakroom:-

Close couple WC, wash hand Basin, window to side elevation.

Sitting Room:- 12' 1" x 9' 10" (3.68m x 2.99m) plus bay window
Bay window to front elevation.

Kitchen:- 12' 0" x 10' 2" (3.65m x 3.10m)

Two windows to side elevation, fitted with a range of base cupboard and matching eye level units, Range style oven with extractor hood over, space for table and chairs, sink unit with mixer tap, inset spotlighting, arch to:

Utility Room:- 9' 7" x 5' 2" (2.92m x 1.57m)

Window and door to rear garden, tiled flooring, storage cupboards, plumbing for washing machine and tumble dryer, roll top work surface.

Dining Room:- 15' 0" x 11' 3" (4.57m x 3.43m) maximum measurements plus bay window

Double aspect with window to front elevation and bay window to side elevation, original wood panelling, feature fireplace, double opening doors to:

Living Room:- 16' 8" x 14' 7" (5.08m x 4.44m)

Gas fireplace, windows to side elevation, windows and double opening doors to:

Garden Room:- 17' 6" x 15' 2" (5.33m x 4.62m) maximum measurements

UPVC double glazed windows and double opening doors to garden, roof light, inset spotlighting.

Garage/ Workshop:- 16' 5" x 15' 5" (5.00m x 4.70m) extending to 24' 11" (7.59m)

L-shape, up and over door, power and light connected, personal door to house and garden.

Office:- 10' 0" x 9' 0" (3.05m x 2.74m)

Double opening doors to rear garden.

First Floor Landing:-

Bedroom One:- 15' 1" x 11' 4" (4.59m x 3.45m) maximum measurements plus bay window

Double aspect with UPVC double glazed bay window to side elevation and window to front elevation, door to:

En Suite:- 5' 8" x 4' 11" (1.73m x 1.50m)

Window to side elevation, wash hand basin, closed coupled WC, shower cubicle, extractor fan, inset spotlighting.

Bedroom Two:- 12' 0" x 9' 11" (3.65m x 3.02m) plus bay window
Bay window to front elevation.

Bedroom Three:- 11' 7" x 8' 9" (3.53m x 2.66m)

Windows to rear and side elevations, door to:

En Suite:- 6' 5" x 5' 10" (1.95m x 1.78m)

Shower cubicle, wash hand basin, close coupled WC, extractor fan.

Bedroom Four:- 10' 7" x 10' 1" (3.22m x 3.07m) narrowing to 7' 4" (2.18m)

Window to rear elevation door to:

En Suite:- 7' 2" x 4' 7" (2.18m x 1.40m)

Panelled bath with shower attachment over, wash hand basin, close coupled WC, inset spotlighting, extractor fan.

Study Area:- 10' 2" x 6' 11" (3.10m x 2.11m) Including corridor
Window to side elevation.

Bathroom:- 7' 2" x 6' 8" (2.18m x 2.03m) maximum measurements

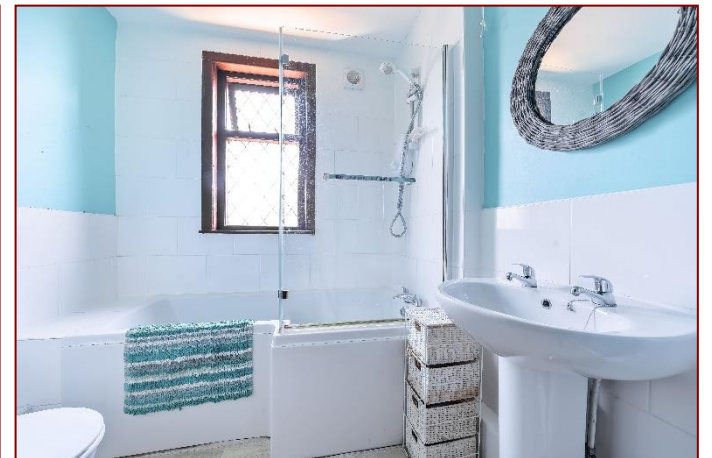
Double glazed window to side elevation, panelled bath, shower over and fitted shower screen, wash hand basin, inset spotlighting, extractor fan.

Outside:-

The delightful rear garden is enclosed by panelled fencing, primarily laid to lawn with patio area, shrubs and bushes to borders. Heated swimming pool which is enclosed by fencing with gated access. To the front of the property there is a gravelled driveway surrounding by attractive gardens and vehicular to double garage.

Garden Office:- 11' 4" x 11' 4" (3.45m x 3.45m)

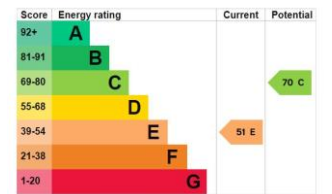
Ideal home office or hobbies room with power and light connected, wired in internet access from the main house, double glazed double opening doors.





Tenure: Freehold

Council Tax Band: F



Disclaimer: These particulars are set out as a general outline in accordance with the Consumer Protection from Unfair Trading Regulations 2008 (CPR's) and Business Protection from Misleading Marketing Regulations 2008 (BPR's) only for the guidance of intending purchasers or lessees, and do not constitute any part of an offer or contract. Details are given without any responsibility, and any intending purchasers, lessees or third parties should not rely on them as statements or representations of fact, but must satisfy themselves by inspection or otherwise as to the correctness of each of them.

We have not carried out a structural survey and the services, appliances and specific fittings have not been tested. All photographs, measurements, floor plans and distances referred to are given as a guide only and should not be relied upon for the purchase of carpets or any other fixtures or fittings. Gardens, roof terraces, balconies and communal gardens as well as tenure and lease details cannot have their accuracy guaranteed for intending purchasers. Lease details, service ground rent (where applicable) are given as a guide only and should be checked and confirmed by your solicitor prior to exchange of contracts.

No person in the employment of Fenwicks Estates Ltd has any authority to make any representation or warranty whatever in relation to this property. Purchase prices, rents or other prices quoted are correct at the date of publication and, unless otherwise stated, exclusive of VAT.

Data Protection: We retain the copyright in all advertising material used to market this Property.

Money Laundering Regulations 2017: Intending purchasers will be required to produce identification documentation once an offer is accepted.



£725,000

20 Monckton Road, Alverstoke, Gosport, PO12 2BQ

DRAFT DETAILS

Fenwicks - Gosport Office: 02392 529889 www.fenwicks-estates.co.uk

Fenwicks

THE INDEPENDENT ESTATE AGENT