

Description

Situated in a prestigious location and just one road back from seafront is this individual and substantial six bedroom detached family home. The property enjoys generous living accommodation arranged three floors and is set within beautiful established gardens. There is a double detached garage and parking to both the front and rear. Roof top views of the Solent & Isle of Wight can be appreciated from the first and second floors.

The Accommodation Comprises:-

Double opening leaded light glazed doors to:

Entrance Porch

Twin lockable storage cupboards, double opening glazed doors to:

Reception Hall:-

Quarry tiled flooring, stairs to first floor, feature circular stained glass window, antique dual fuel cast iron stove, corner storage cupboard housing alarm system.

Drawing Room:-

Triple aspect with bay window overlooking the rear garden, further bay window to side elevation with double opening French-style doors to garden room, and bow window to front elevation, cedar wood flooring, feature beams to ceiling, inglenook fireplace with living flame gas fire.

Garden Room:-

Enjoying views and access onto the wraparound gardens, with roof lights, gas fireplace, feature beams and tiled flooring.

Formal Dining Room:-

Bay window to front elevation, feature fireplace with attractive brick surround, feature beams to ceiling.

Cloakroom:-

WC, modern glass wash hand basin, window to side elevation.

Kitchen/Breakfast Room:-

Fitted with a range of base cupboards and matching eye level units including display units, Aga, double bowl sink unit, larder, space for table and chairs, double aspect to the rear and side elevations, door to:

Summer Kitchen:-

Base cupboard units, space for appliances to include oven, fridge and freezer, double bowl sink unit, window to rear elevation, wall mounted gas boiler.

Side Lobby:-

Window and door to side, water softener, door to:

Utility Room:-

Windows to side and rear elevations and door to rear garden, fitted with base cupboards and sink unit, space and plumbing for washing machine and tumble dryer, polycarbonate roof with openers, folding work bench, quarry tiled flooring.

Study/Gym:-

Window to front elevation, laminate flooring.

First Floor Landing:-

Stairs to second floor, cupboard housing one of two hot water tanks.

Bedroom One:-

Bay window to front elevation, fitted with a range of built in wardrobes, matching dressing table, overbed storage and bedside cabinets, door to:

En Suite:-

Window to side elevation, WC, bidet, wash hand basin, bath with mains waterfall shower over.

Bedroom Two:-

Double aspect with windows to side and rear elevations, built in wardrobes.

Bedroom Three:-

Double aspect with windows to rear and side elevations.

Bedroom Four:-

Double aspect with windows to front and side elevations, built in wardrobes.

Bedroom Five:-

Double aspect with windows to front and side elevations, built in wardrobes.

Second Floor Landing:-

Access to eaves storage, Velux window.

Bedroom Six:-

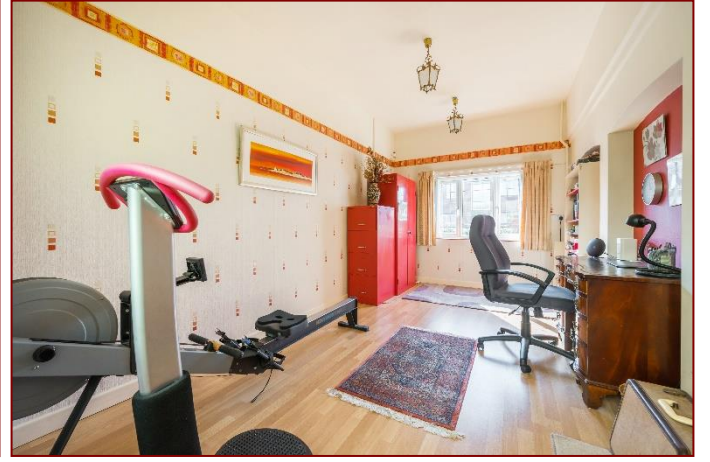
Double aspect with windows to both sides, built in wardrobes, delightful rooftop views towards the Solent and Isle of Wight.

Bathroom:-

Velux window, WC, wash hand basin set in vanity unit, corner bath with shower attachment, cupboard housing second water tank which is connected to solar thermal panels.

Outside:-

The property is set within beautiful established gardens which are primarily laid to lawn and enclosed by brick wall and fencing behind mature boarders. A superb entertaining area which is paved and is ideal for alfresco dining, pergola, built in BBQ and fish pond. There is parking to the front and rear along with a detached double garage with remote controlled door, power and light connected and courtesy door to garden. There is also a further workshop with double opening doors. To the rear of the garage is a paved area and log store.





Tenure: Freehold

Council Tax Band: G



Disclaimer: These particulars are set out as a general outline in accordance with the Consumer Protection from Unfair Trading Regulations 2008 (CPR's) and Business Protection from Misleading Marketing Regulations 2008 (BPR's) only for the guidance of intending purchasers or lessees, and do not constitute any part of an offer or contract. Details are given without any responsibility, and any intending purchasers, lessees or third parties should not rely on them as statements or representations of fact, but must satisfy themselves by inspection or otherwise as to the correctness of each of them.

We have not carried out a structural survey and the services, appliances and specific fittings have not been tested. All photographs, measurements, floor plans and distances referred to are given as a guide only and should not be relied upon for the purchase of carpets or any other fixtures or fittings. Gardens, roof terraces, balconies and communal gardens as well as tenure and lease details cannot have their accuracy guaranteed for intending purchasers. Lease details, service ground rent (where applicable) are given as a guide only and should be checked and confirmed by your solicitor prior to exchange of contracts.

No person in the employment of Fenwicks Estates Ltd has any authority to make any representation or warranty whatever in relation to this property. Purchase prices, rents or other prices quoted are correct at the date of publication and, unless otherwise stated, exclusive of VAT.

Data Protection: We retain the copyright in all advertising material used to market this Property.

Money Laundering Regulations 2017: Intending purchasers will be required to produce identification documentation once an offer is accepted.



£995,000

'Glentimon' 12 Palmerston Way, Alverstoke, Gosport, PO12 2LZ

DRAFT DETAILS

Fenwicks - Gosport Office: 02392 529889 www.fenwicks-estates.co.uk

Fenwicks

THE INDEPENDENT ESTATE AGENT