

# KYM VIEW CLOSE

From Bewick Homes

Bewick Homes  
LIMITED



## ABOUT US

Founded in 1994 by Ivan Twigden, Bewick Homes is a privately owned company whose philosophy is to provide a home of quality and value to the satisfaction of our customers.

We have a well-earned reputation and pride ourselves on our attention to detail, from design to construction, together with a commitment to a high specification. Our developments take the latest trends and thoughtfully apply them to each and every property we construct into a new home.

Being a small private company enables us to offer a bespoke approach to you, offering a choice of fixtures and fittings (subject to the stage of construction) to enable you to personalise your new home – just one of the many benefits of buying a new build property.









The latest prestigious development from Bewick Homes.  
Thirteen four & five bedroom detached family homes in the popular village of Kimbolton.

Close to all the village amenities & schools

High specification family homes with bi-Fold doors and sash windows

Variety of brick & roof types

Grafton painted kitchens with Quartz worktops and splash backs & integrated NEFF appliances

Roca and Hansgrope bathroom suites

Fitted flooring throughout with Karndean and a superior carpet range

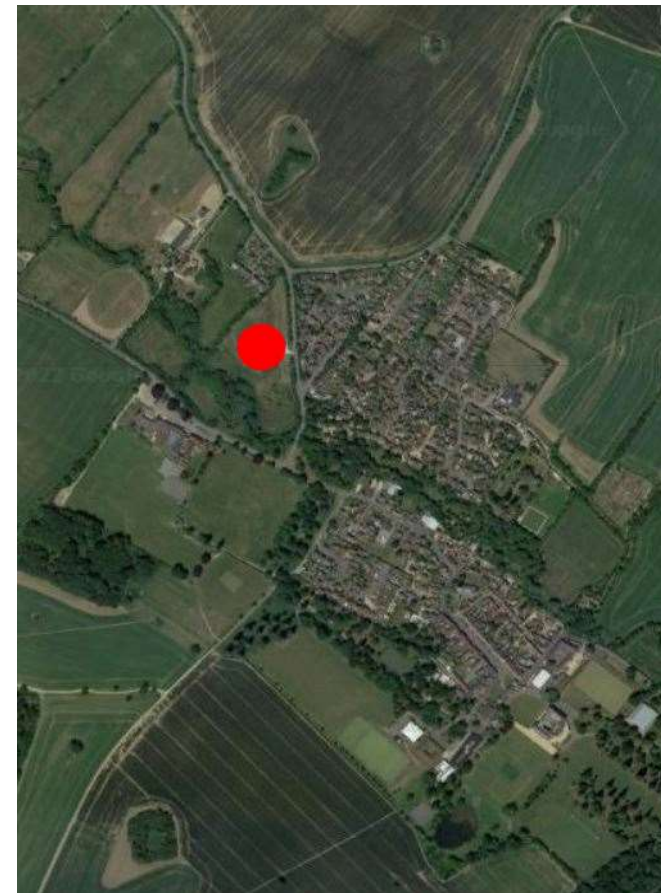
Solid Oak internal doors & feature staircases

Air source heat pumps with zoned under floor heating

Openreach Fibre Internet

Rail links to London in an hour from St. Neots or Bedford

10 year structural warranty













# DEVELOPMENT PLAN & PRICES

Plot 1 • House Type A5 - approx. 2900 sqft - Sold

Plot 2 • House Type B - approx. 2225 sqft - £849,000

Plot 3 • House Type B - approx. 2225 sqft - Sold

Plot 4 • House Type C - approx. 1980 sqft – Sale Agreed

Plots 5 to 12 are not being sold by Bewick Homes

Plot 13 • House Type C - approx. 1980sqft - £699,000

Plot 14 • House Type C - approx. 1980sqft - £749,000

Plot 15 • House Type A4 - approx. 2500 sqft - Sold

Plot 16 • House Type G - approx. 3250 sqft - Sold

Plot 17 • House Type A4 - approx. 2500 sqft - Sold

Plot 18 • House Type A4 - approx. 2500 sqft - Sold

Plot 19 • House Type A5 - approx. 2900sqft - Sale Agreed

Plot 20 • House Type A4 - approx. 2500 sqft - £1,149,000

Plot 21 • House Type A5 - approx. 2900 sqft - Sold

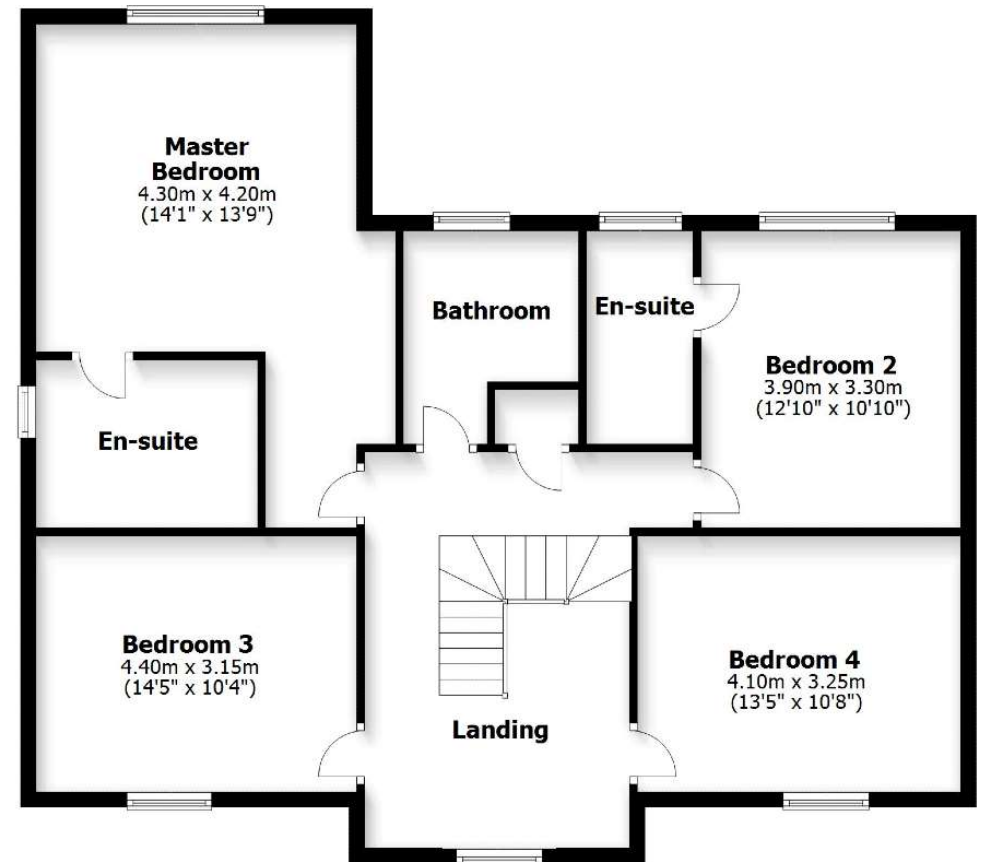


# HOUSE TYPE A5

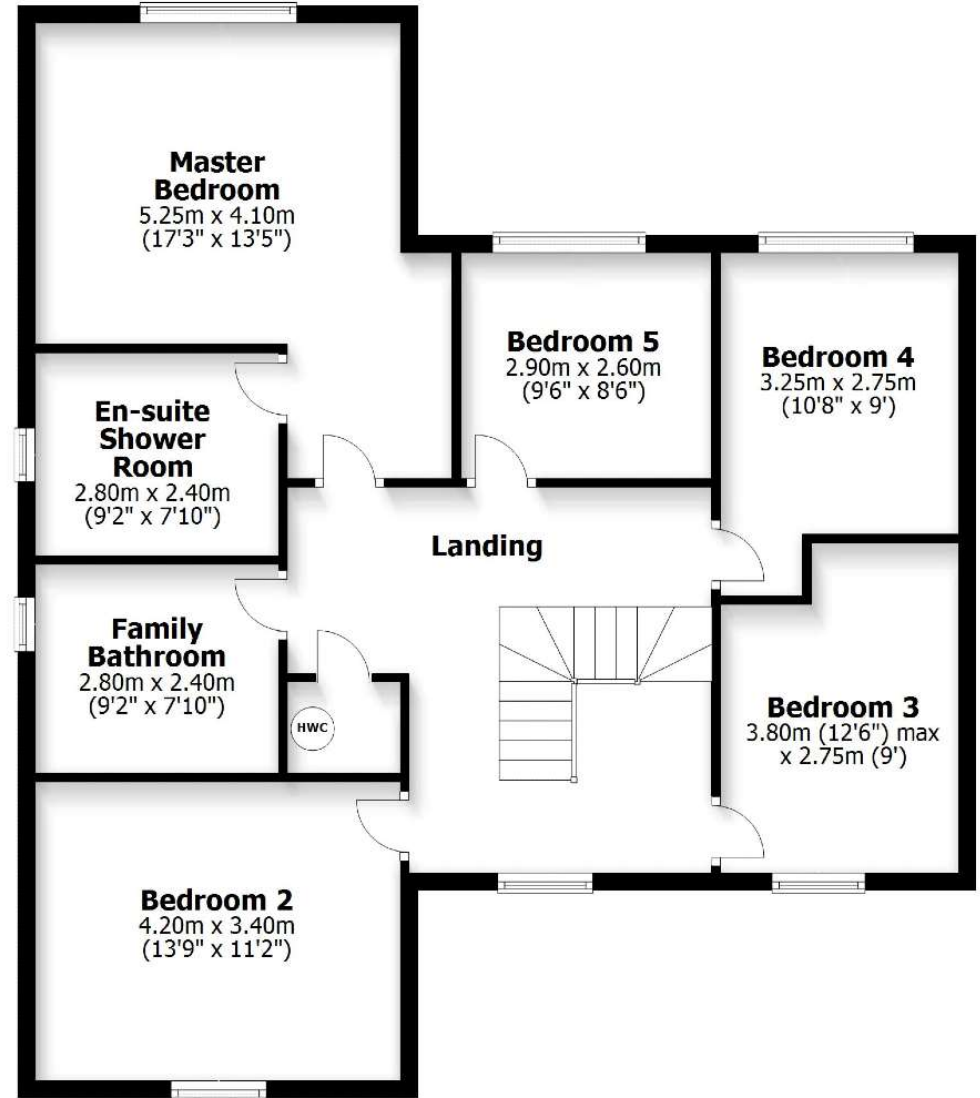
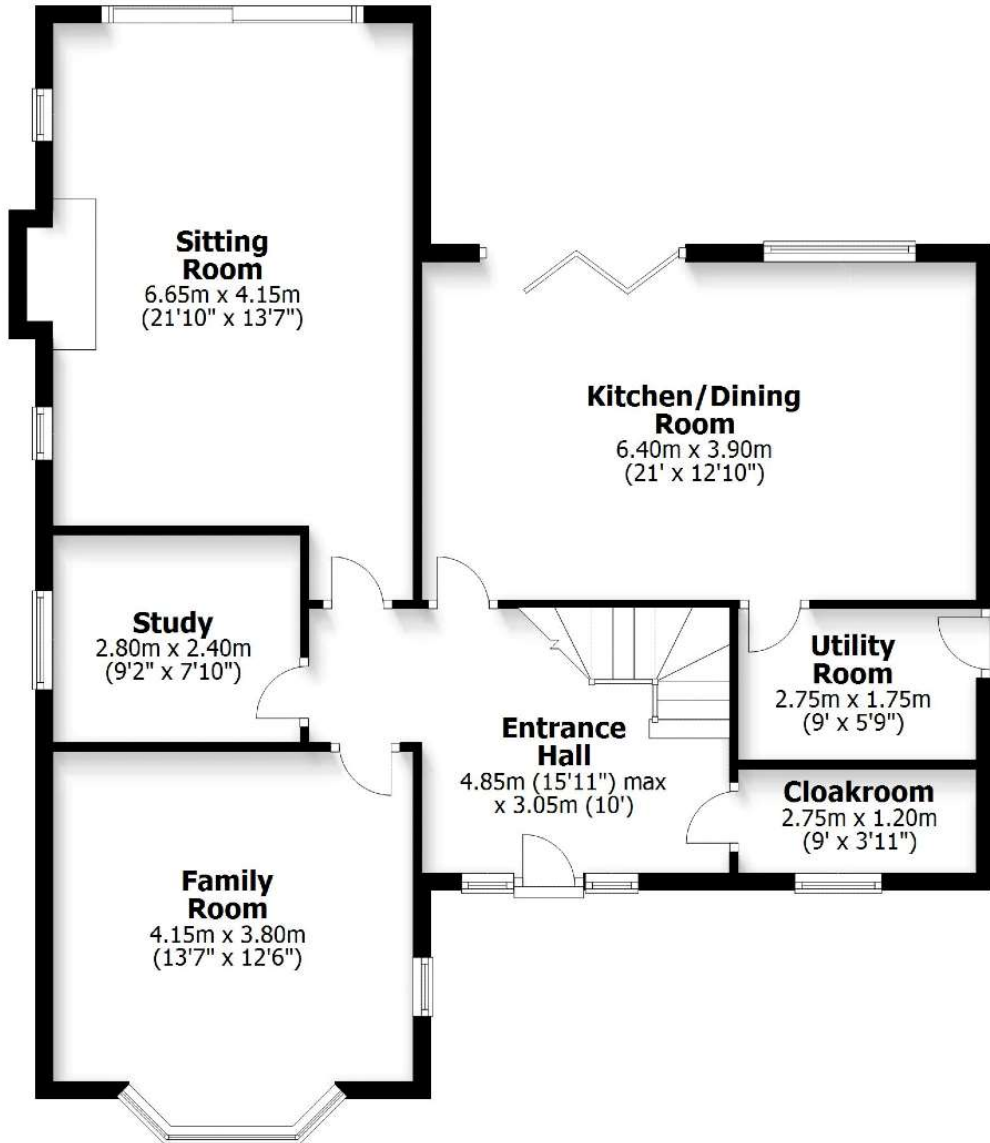




# HOUSE TYPE A4

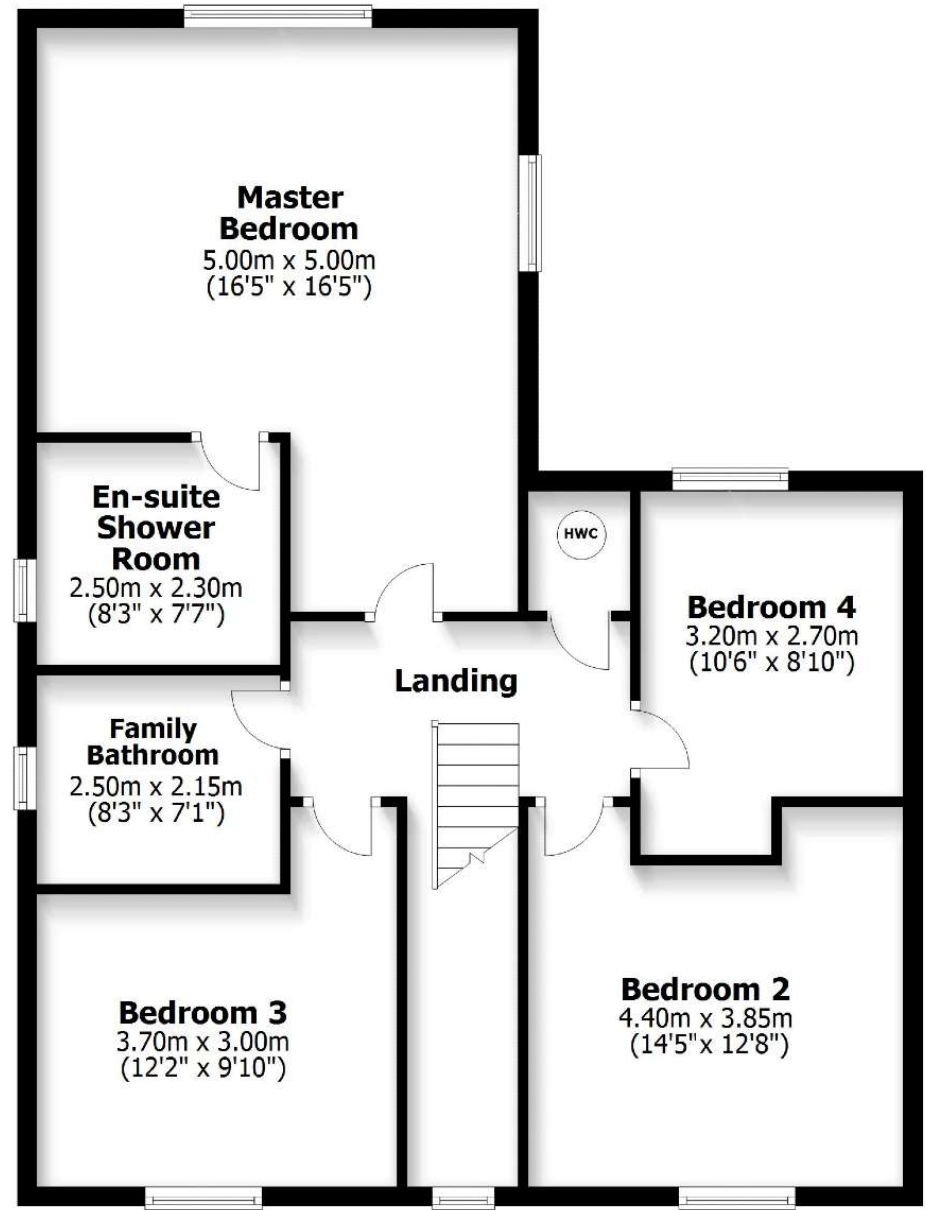
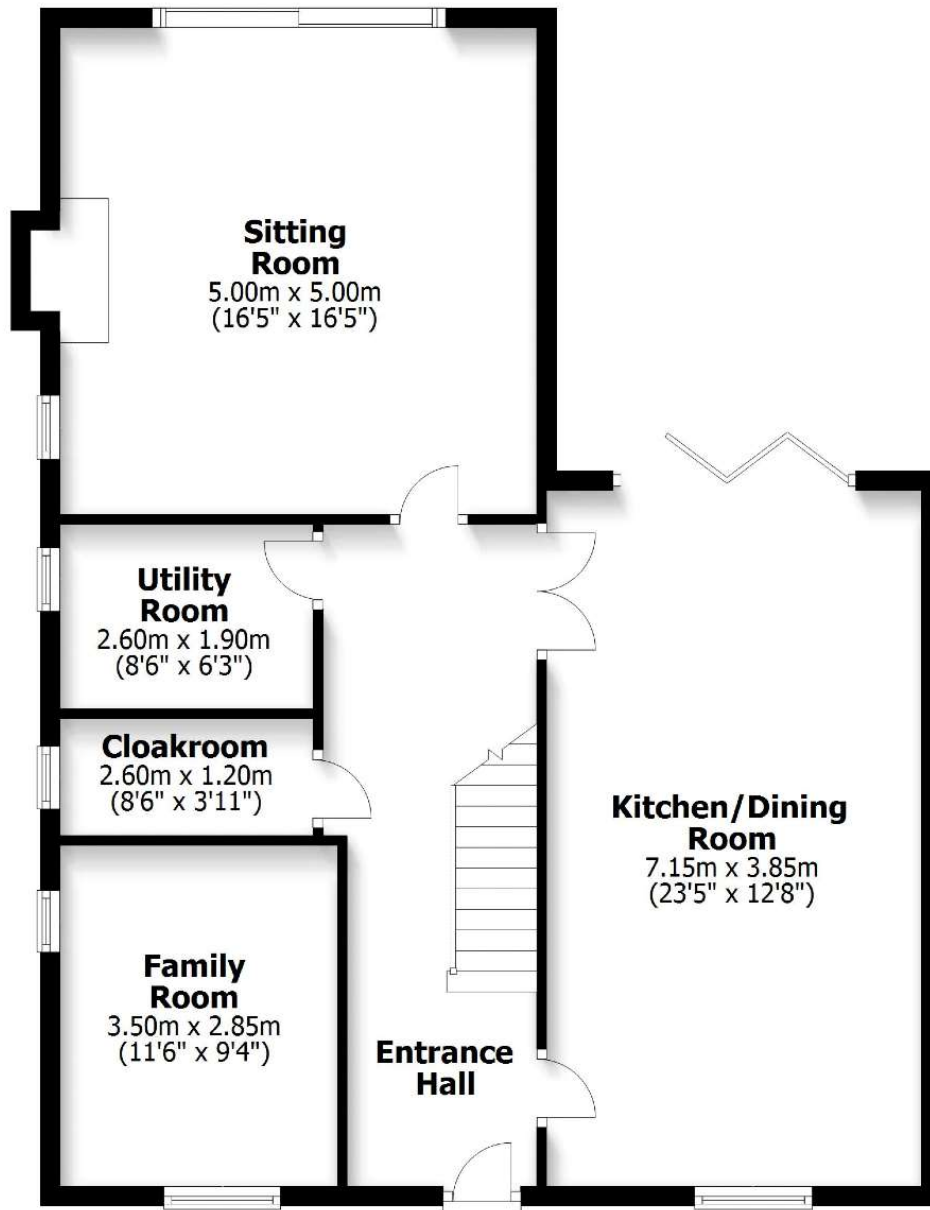


# HOUSE TYPE B





# HOUSE TYPE C

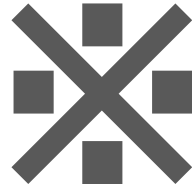












# KYM VIEW CLOSE

**Gatehouse**  
estates

01480 434290

[www.gatehouseestates.co.uk](http://www.gatehouseestates.co.uk)

Please note, the information included within this brochure was correct at the time of going to press and certain details may have been changed. Floor plans, layouts and dimensions are taken from architectural drawings and are for guidance only. Maximum dimensions are usually stated and there may be projections into these. Photography included depicts the show home. This brochure does not constitute any part of a contract, nor does it constitute an offer. Bewick Homes reserves the right to make alterations to the specification of the homes at any time during the course of the construction without prior notice.