



**HENDERSON
CONNELLAN**
ESTATE AGENTS

Westfields Road, Corby, Northamptonshire, NN17 1HQ

Offers Over £200,000

3 1 1



"Lovable Lloyds Location!"

Offered for sale with a modern interior, this three bed semi detached property is being sold with NO CHAIN. The accommodation comprises entrance hall, living/dining room, kitchen, bathroom and three bedrooms. The property comes with a generous sized plot including a deep frontage with a driveway providing parking and a rear garden. The property is conveniently located for the local amenities including shops and schools while the town centre is also close by.

Description:

Located within the well serviced Lloyds area, this semi detached house is being offered for sale with a modern interior and a generous sized plot with parking.

The accommodation comprises entrance hall with stairs rising to the first floor landing.

The living/dining room is dual aspect with a timber laminate floor.

The kitchen is fitted with a range of wall and base level units with work surfaces incorporating and sink with drainer and ceramic tiled wall surrounds. There is a built in electric oven, hob and extractor hood in addition to plumbing and space for a washing machine. A door opens onto the side elevation and driveway.

The bathroom is situated on the ground floor and includes a side panel bath with a hand held shower attachment, WC and a wash hand basin set within a modern vanity unit with ceramic tiled wall surrounds.

From the first floor landing there is a storage cupboard and three bedrooms.

Gas fired central heating system and uPVC double glazed windows.

Outside:

The plot is a generous sized offering a retained frontage which is laid to lawn, there is a driveway which provides parking for two cars. The rear garden is also mainly laid to lawn and is enclosed by fencing and hedging.

Room Measurements:

Living Room/Diner - 5.46m x 2.01m (17'11" x 6'7")

Kitchen - 3.84m x 2.77m (12'7" x 9'1")

Bathroom - 1.65m x 1.6m (5'5" x 5'3")

Bedroom One - 3.33m x 3.15m (10'11" x 10'4")

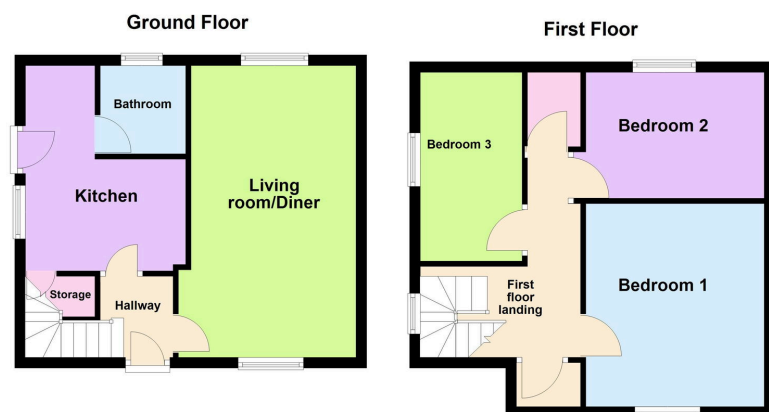
Bedroom Two - 3.33m x 2.36m (10'11" x 7'9")

Bedroom Three - 3.53m x 1.91m (11'7" x 6'3")





- Semi Detached House
- Popular Lloyds Area
- Modern Kitchen and Bathroom
- NO CHAIN
- Driveway and Parking
- Three Bedrooms
- Lounge/Diner
- Front and Rear Gardens



Disclaimer: These particulars do not form part of any offer or contract and should not be relied upon as statements or representations of fact. Any areas, measurements of distances are approximate. The text, photographs and plans are for guidance only and are not necessarily comprehensive.

10 Spencer Court, Corby,
Northamptonshire, NN17 1NU

