

***London Road***

***£1,900 PCM***

*This stunning two bedroom two bathroom penthouse apartment really merits early viewing. Benefits include roof terrace with panoramic views, concierge, communal gym, allocated underground parking, integral appliances including dishwasher and more! Viewing advised. Available early March 2024*

# London Road

Solent Court Penthouse

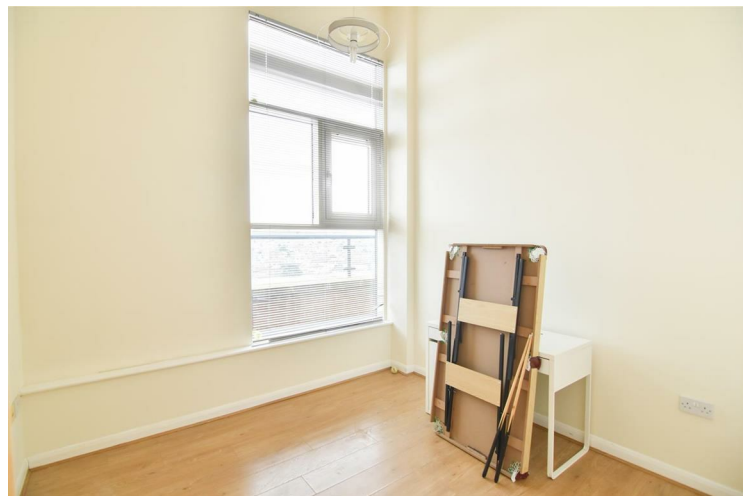
EN-SUITE

**LOUNGE**



**BEDROOM 2**

**KITCHEN**



**BATHROOM**

**BEDROOM 1**



# *London Road*

**BALCONY**



**BALCONY 2**



**VIEW**



## Energy Efficiency Rating

	Current	Potential
<i>Very energy efficient - lower running costs</i>		
(92 plus) <b>A</b>		
(81-91) <b>B</b>		
(69-80) <b>C</b>	72	79
(55-68) <b>D</b>		
(39-54) <b>E</b>		
(21-38) <b>F</b>		
(1-20) <b>G</b>		
<i>Not energy efficient - higher running costs</i>		
<b>England &amp; Wales</b>	EU Directive 2002/91/EC	