



London Road

£1,400

A rare opportunity to rent this smart one bedroom unfurnished apartment with integral dishwasher, washing machine and fridge freezer with west facing views set in a prestigious & popular development. Benefits include COMMUNAL GYM, CONCIERGE, UNDERGROUND PARKING, communal gardens, upper communal roof terrace and more. Situated a 12 minute walk from the Zone 3 Norbury British Rail station and minutes from local shops. With Nuffield Fitness literally around the corner, this is a great lifestyle choice for any discerning tenant Available August 2024, UNFURNISHED

London Road

Entrance hall

Reception 14'9 x 10'6 (4.50m x 3.20m)

Kitchen area (open plan to reception) 11'6 x 6'3 (3.51m x 1.91m)

Bedroom 11'2 x 10'2 (3.40m x 3.10m)

En-suite bathroom 6'7 x 5'7 (2.01m x 1.70m)

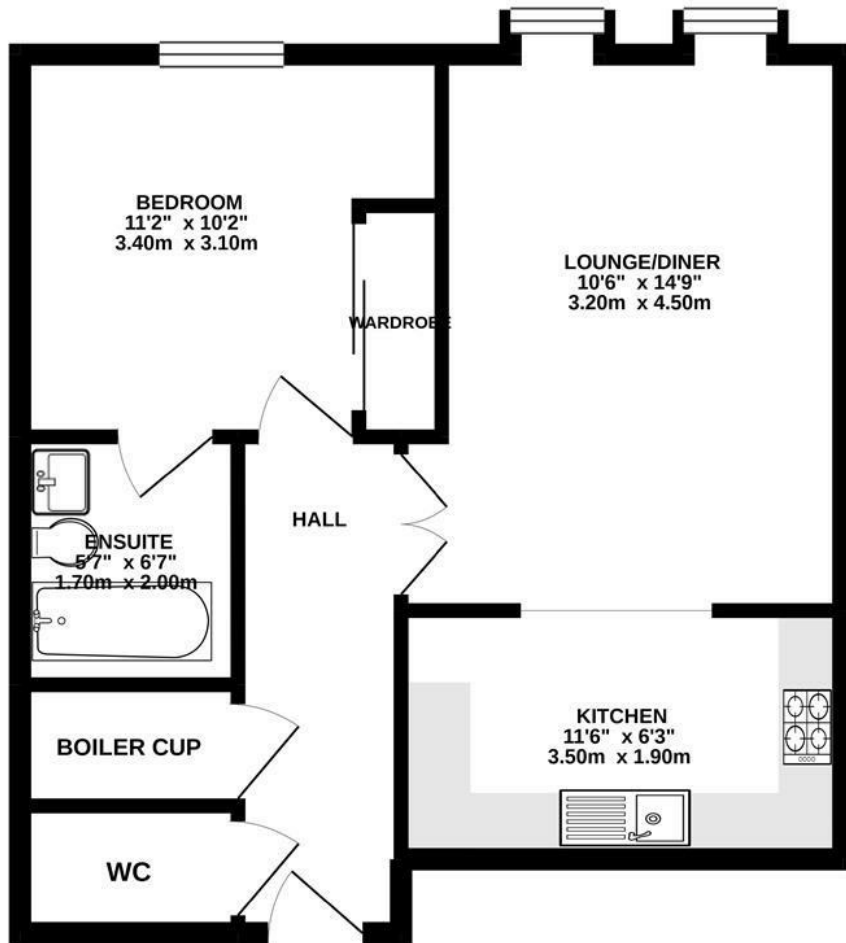
Cloakroom

Communal gym

Concierge

Communal gardens





TOTAL FLOOR AREA: 489 sq. ft. (45.4 sq.m.) approx.

Whilst every attempt has been made to ensure the accuracy of the floorplan contained here, measurements of doors, windows, rooms and any other items are approximate and no responsibility is taken for any error, omission or mis-statement. This plan is for illustrative purposes only and should be used as such by any prospective purchaser. The services, systems and appliances shown have not been tested and no guarantee as to their operability or efficiency can be given.
Made with Metropix ©2020

Energy Efficiency Rating		
	Current	Potential
<i>Very energy efficient - lower running costs</i>		
(92 plus) A		
(81-91) B		85
(69-80) C	73	
(55-68) D		
(39-54) E		
(21-38) F		
(1-20) G		
<i>Not energy efficient - higher running costs</i>		
England & Wales	EU Directive 2002/91/EC	

