



T Samuel Estate Agents

Tel: 01443 476419 Website: www.tsamuel.co.uk Email: info@tsamuel.co.uk

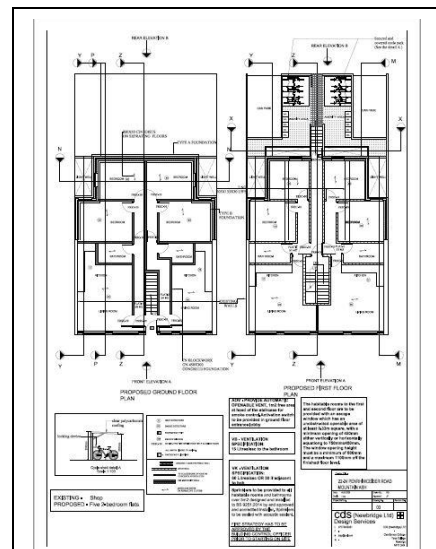
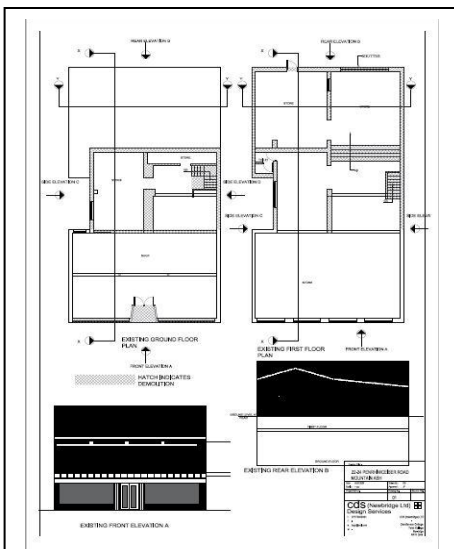


Penrhiwceiber Road
Mountain Ash, CF45 3SP

FOR SALE

- FULL PLANNING
- 5, 2 BEDROOM FLATS
- OFF ROAD PARKING TO REAR

£85,000



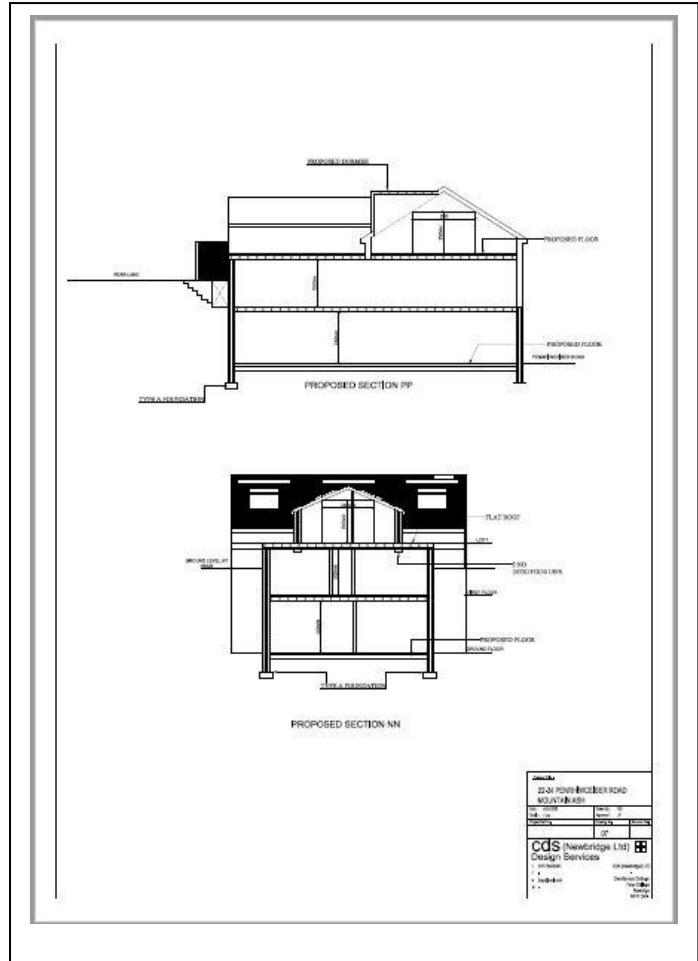
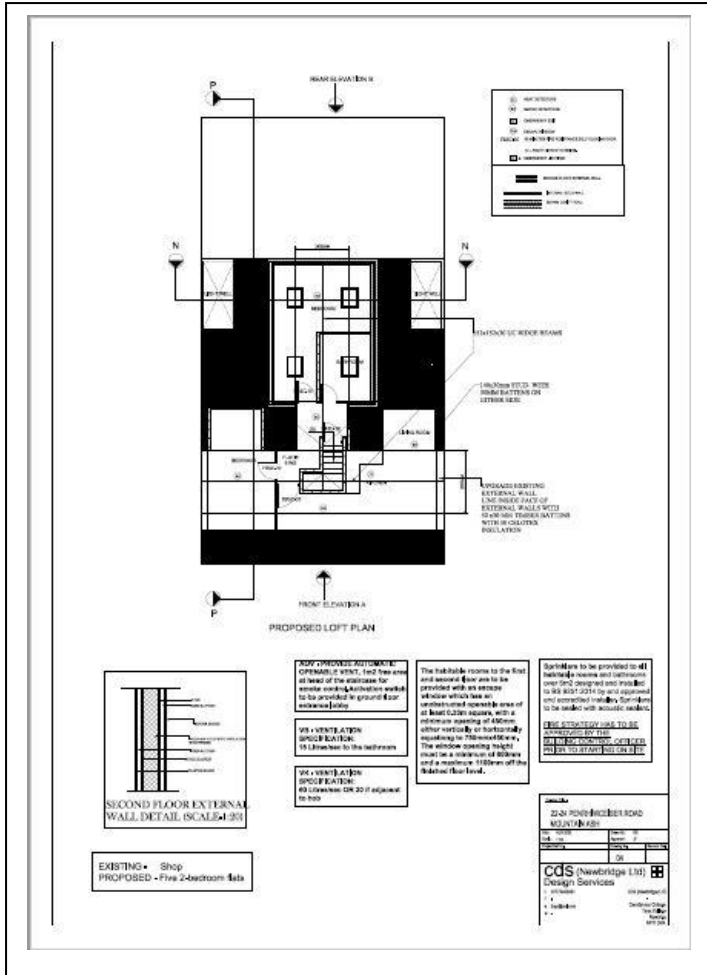
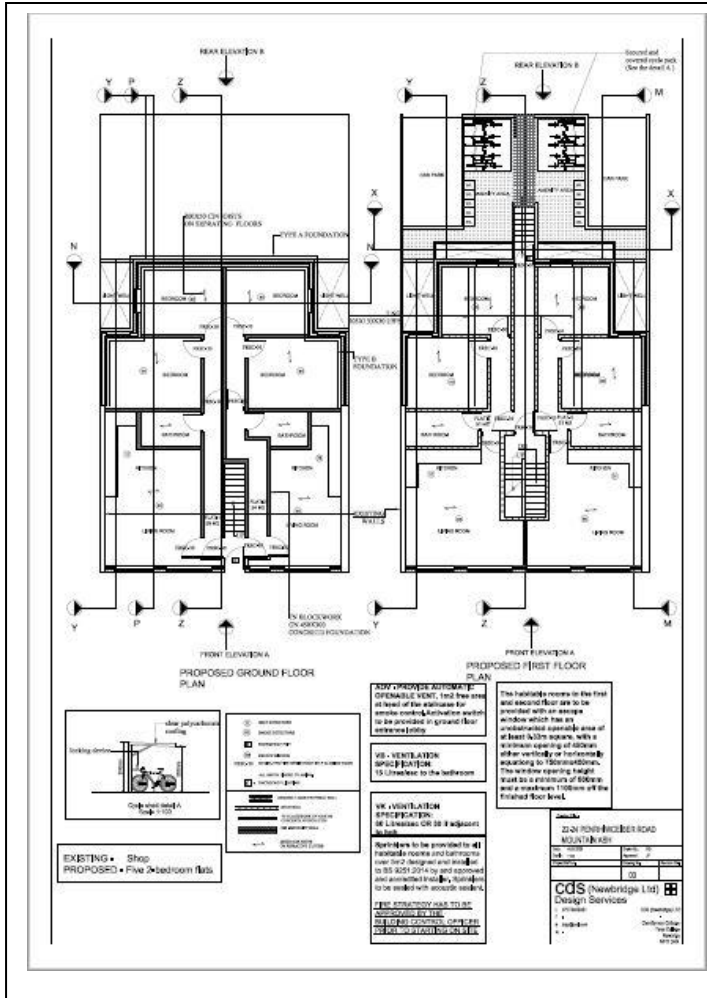
Property Description

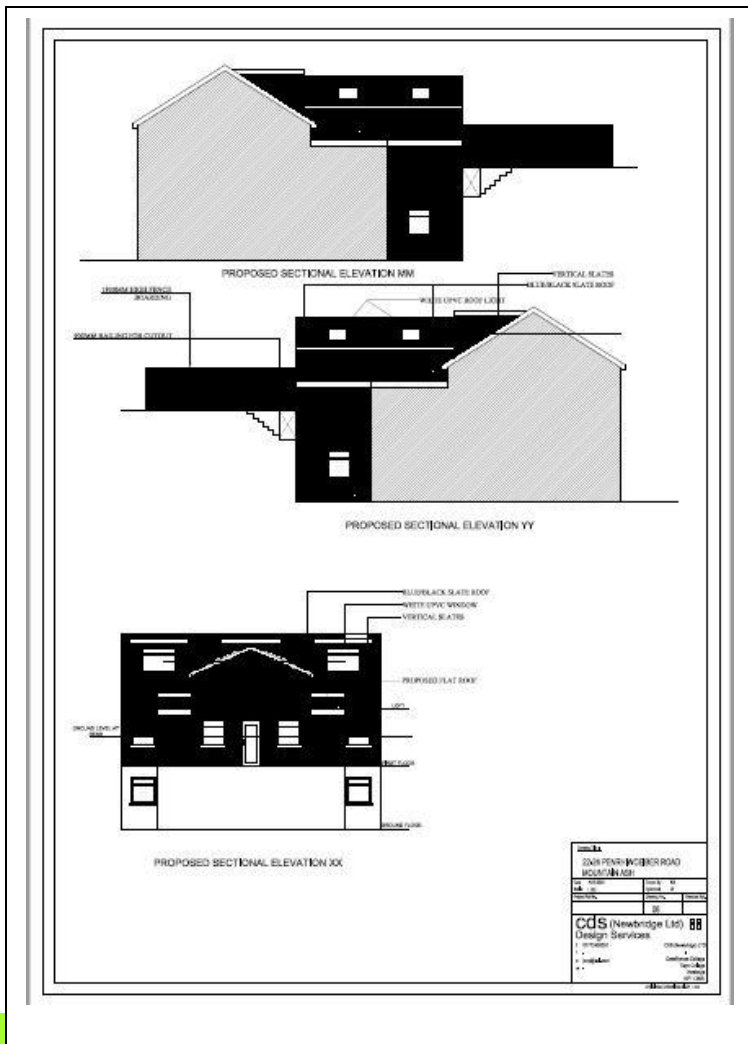
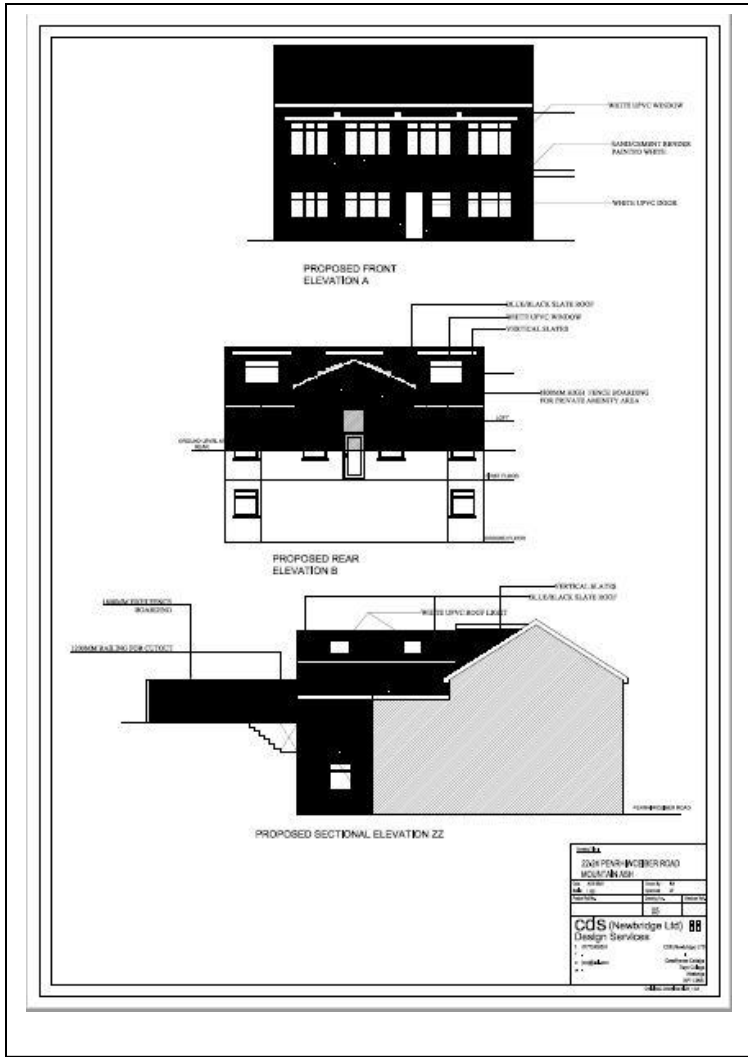
FULL DESCRIPTION

We are pleased to bring to the market this proposed development. Situated on the main road of Penrhiwceiber on the outskirts of Mountain Ash. With full planning to convert to 5 2-bedroom flats, with off-road parking to the rear. This is an excellent investment opportunity!

LOCATION...

Penrhiwceiber is a small Welsh village and community (and electoral ward) in the county borough of Rhondda Cynon Taff that lies south of the town Aberpennar and north of the village of Tyntetown and is one of many villages that lies within the Cynon Valley. Prior to 1870 the area was heavy woodland, but the opening of the Penrhiwceiber Colliery in 1878 saw its rapid expansion into a thriving village. The village boasts a range of amenities including local shops, schools, take away outlets, embroidery shops. Also located close to the hospital in Mountain Ash and A470 (giving easy access to Cardiff)





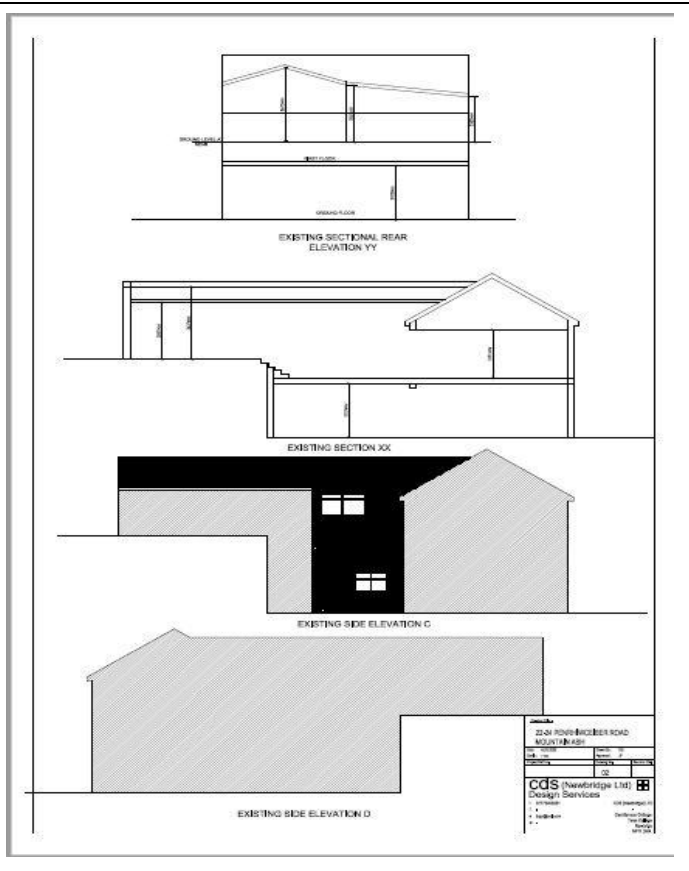
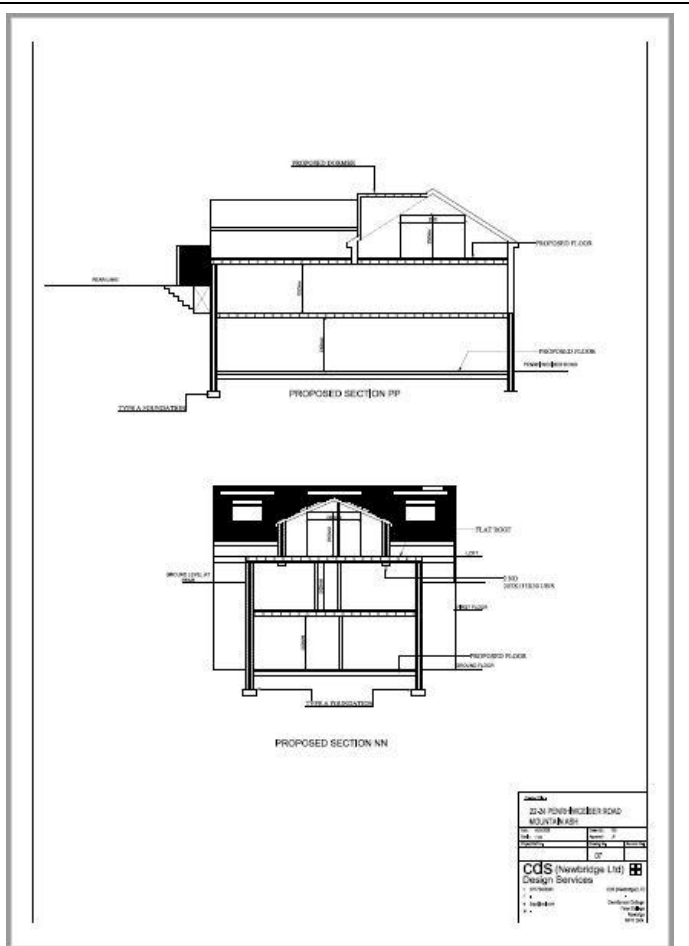
Misdescriptions Act 1991

The Agent has not tested any apparatus, equipment fixtures and fittings or services and so cannot verify that they are in working order or fit for the purpose. A buyer is advised to obtain verification from their Solicitor or Surveyor. References to the tenure of a property are based on information supplied by the seller. The Agent has not had sight of the documents. A Buyer is advised to obtain verification from their Solicitor. Items shown in photographs are not included unless specifically mentioned within the sales particulars. They may however be available by separate negotiation. Buyers must check the availability of any property and make an appointment to view before embarking on any journey to see a property.

Data Protection Act 1998

Please note that all personal information provided by customers wishing to receive information and/or services from the estate agent, for the purpose of providing services associated with the business of an estate agent and for the additional purposes set out in the privacy policy but specifically excluding mailings or promotions by a third party. If you do not wish your personal information to be used for any of these purposes, please notify

your estate agent.



22 Oxford Street
Mountain Ash
Rhondda Cynon Taff
CF45 3PL

www.tsamuel.co.uk
info@tsamuel.co.uk
01443 476419

Agents Note: Whilst every care has been taken to prepare these sales particulars, they are for guidance purposes only. All measurements are approximate and for general guidance purposes only and whilst every care has been taken to ensure their accuracy, they should not be relied upon and potential buyers are advised to recheck the measurements