



## 1 The Pines , Yarm, TS15 9EW

AVAILABLE OCTOBER - NO SMOKERS, PETS CONSIDERED

A substantial Georgian style five bedroom detached house is now available in the highly sought-after area of The Pines, Yarm. This stunning home has been recently renovated to an exceptional standard, making it a rare find on the rental market.

The entrance hallway opens up to a spacious lounge featuring a large bay window and a versatile recess area, ideal for a study or a cosy reading nook. Double doors lead to the dining room, which connects to the utility room, and an impressive open plan kitchen/breakfast room. This kitchen is a real highlight, boasting a range of contemporary units and integrated appliances, including a double oven, gas hob, dishwasher, and fridge/freezer. Natural light floods the space through four Velux windows and a large picture window, creating a perfect spot for family gatherings with a view of the garden. A convenient downstairs W/C completes the ground floor.

£1,850

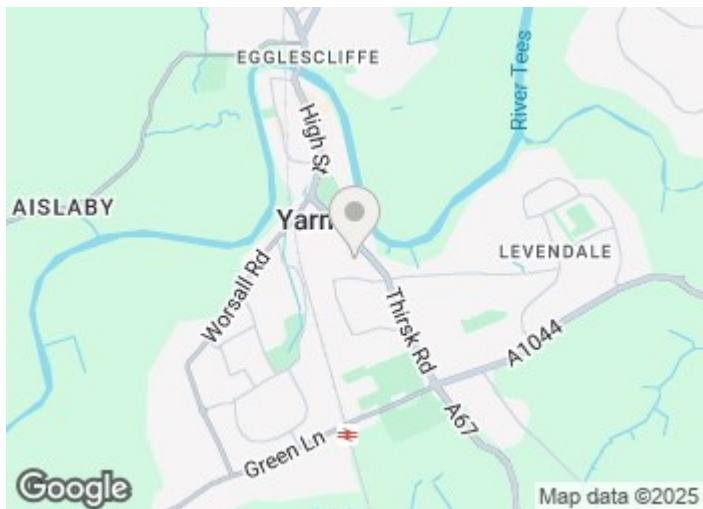
# 1 The Pines

, Yarm, TS15 9EW



- 5 BEDROOM DETACHED HOUSE
- PRIVATE SOUTH-WEST FACING REAR GARDEN
- OFF-ROAD PARKING FOR AT LEAST 4 CARS
- HIGHLY SOUGHT AFTER LOCATION
- NEW CARPETS & RECENTLY DECORATED
- GREAT TRANSPORT LINKS
- BEAUTIFUL OPEN PLAN KITCHEN/BREAKFAST ROOM
- DOUBLE GARAGE WITH ELECTRIC DOOR

HALL	MASTER BEDROOM	BEDROOM FIVE
LOUNGE	16'1" x 16'5" (4.90m x 5.00m)	7'4" x 8'8" (2.24m x 2.64m)
12'7" x 19'5" (3.84m x 5.92m)	EN-SUITE	BATHROOM
DINING ROOM	6'6" x 5'10" (1.98m x 1.78m)	7'1" x 7'6" (2.16m x 2.29m)
10'8" x 16'0" (3.25m x 4.88m)	DRESSING ROOM	
KITCHEN/BREAKFAST ROOM	5'11" x 10'3" (1.80m x 3.12m)	
25'9" x 10'3" (7.85m x 3.12m)	BEDROOM TWO	
UTILITY ROOM	11'5" x 13'5" (3.48m x 4.09m)	
8'9" x 12'11" (2.67m x 3.94m)	EN-SUITE	
SIDE PORCH	8'4" x 5'5" (2.54m x 1.65m)	
5'11" x 13'2" (1.80m x 4.01m)	BEDROOM THREE	
W/C	10'11" x 10'8" (3.33m x 3.25m)	
LANDING	BEDROOM FOUR	
	8'1" x 10'1" (2.46m x 3.07m)	



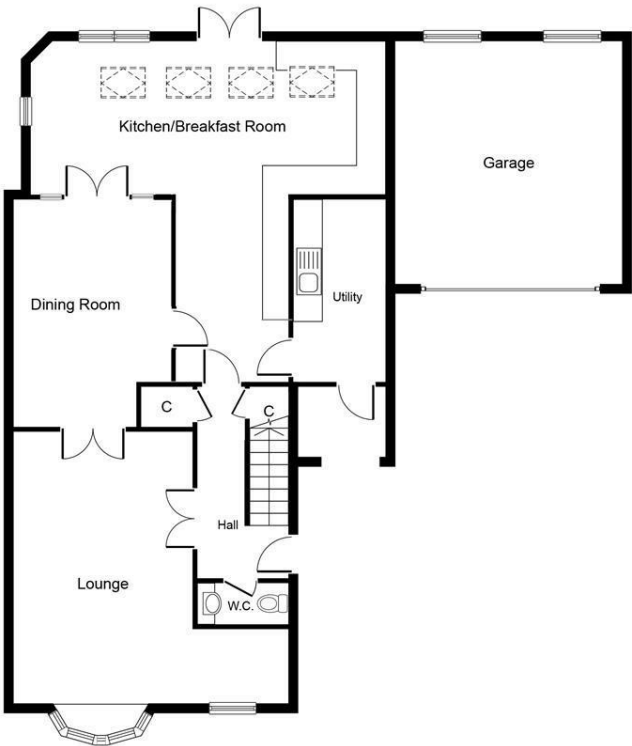
Directions



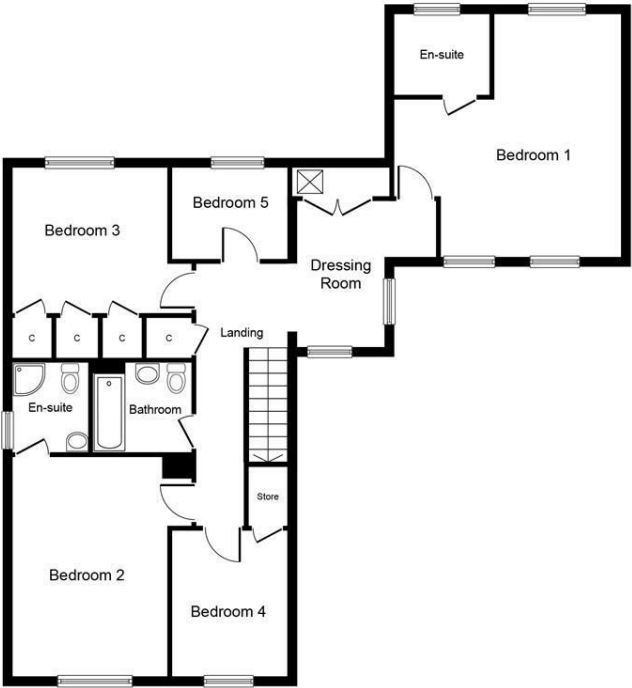




Floor Plan



Ground Floor



First Floor

Whilst every attempt has been made to ensure the accuracy of the floor plan contained here, measurements of doors, windows, rooms and any other items are approximate and no responsibility is taken for any error, omission, or mis-statement. The measurements should not be relied upon for valuation, transaction and/or funding purposes. This plan is for illustrative purposes only and should be used as such by any prospective purchaser or tenant. The services, systems and appliances shown have not been tested and no guarantee as to their operability or efficiency can be given.  
Copyright V360 Ltd 2024 | [www.houseviz.com](http://www.houseviz.com)

These particulars, whilst believed to be accurate are set out as a general outline only for guidance and do not constitute any part of an offer or contract. Intending purchasers should not rely on them as statements of representation of fact, but must satisfy themselves by inspection or otherwise as to their accuracy. No person in this firm's employment has the authority to make or give any representation or warranty in respect of the property.

