



9 West Street , Yarm, TS15 9BU

AVAILABLE AROUND 9 SEPTEMBER 2024 - SORRY NO PETS OR SMOKERS

A wonderful FULLY FURNISHED late Victorian five bedroomed detached house on a substantial site of near 0.4 of an acre. Just a short stroll from Yarm High Street, this is undoubtedly a special property of quality and character, offering large family accommodation.

Ground floor accommodation includes spacious entrance hall, bright lounge with doors out to the rear garden, a second reception room, a large open plan kitchen/dining room, utility and cloaks/WC. At upper level there is a master bedroom with dressing room and en-suite, three further double bedrooms with period fireplaces, a fifth single bedroom/study, family bathroom plus a second separate WC. Standards are high throughout and overall accommodation extends to a floor area of around 2,800 sq ft.

£2,500 Per Month

9 West Street

, Yarm, TS15 9BU



4



3



2



E

- DETACHED VICTORIAN HOUSE
- LARGE OPEN PLAN FAMILY ACCOMMODATION
- LARGE WEST FACING REAR GARDEN
- 5 BEDROOMS
- GARDENER AND WINDOW CLEANER INCLUDED
- POPULAR YARM LOCATION
- IMMACULATELY PRESENTED
- 0.4 OF AN ACRE SITE

VESTIBULE

HALL

LOUNGE ONE

12'11" x 16'11" (3.94m x 5.16m)

LOUNGE TWO

22" x 13'10" (6.71m x 4.22m)

KITCHEN/DINING ROOM

33'7" x 15'1" (10.24m x 4.60m)

UTILITY

13'8" x 8'1" (4.17m x 2.46m)

REAR LOBBY

WC

LANDING

WC

BEDROOM ONE

13'11" x 13" (4.24m x 3.96m)

DRESSING ROOM

7'11" x 8'9" (2.41m x 2.67m)

ENSUITE

3'10" x 6'11" (1.17m x 2.11m)

BEDROOM TWO

12'11" x 13'11" (3.94m x 4.24m)

BEDROOM THREE

12" x 15'2" (3.66m x 4.62m)

BEDROOM FOUR

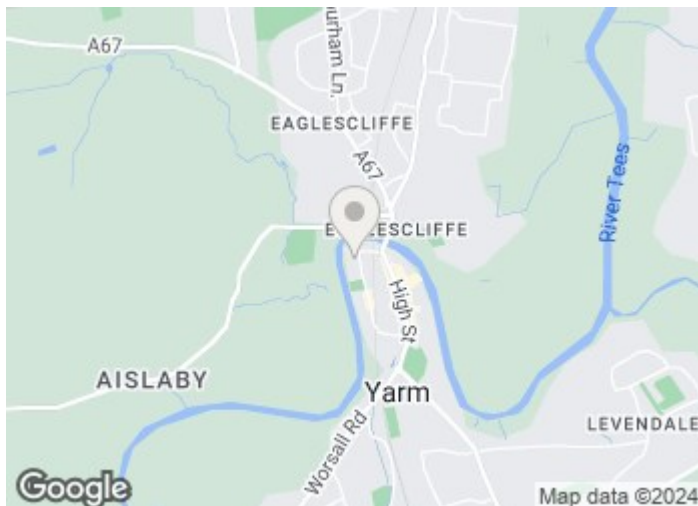
11'2" x 15" (3.40m x 4.57m)

BEDROOM FIVE

12'1" x 6'11" (3.68m x 2.11m)

BATHROOM/WC

9'7" x 5'11" (2.92m x 1.80m)

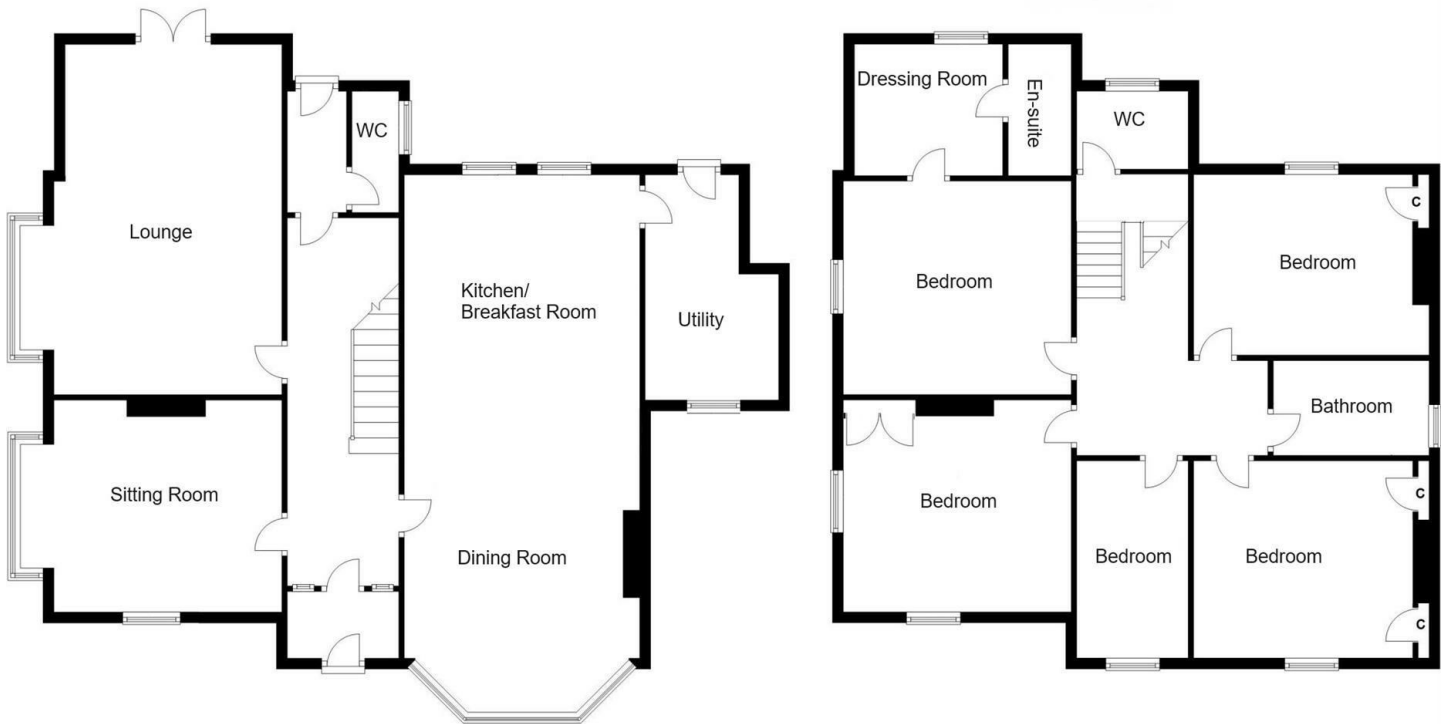


Directions





Floor Plan



These particulars, whilst believed to be accurate are set out as a general outline only for guidance and do not constitute any part of an offer or contract. Intending purchasers should not rely on them as statements of representation of fact, but must satisfy themselves by inspection or otherwise as to their accuracy. No person in this firm's employment has the authority to make or give any representation or warranty in respect of the property.

101 High Street, Yarm, TS15 9BB
Tel: 01642 248248 Email: yarm@gowlandwhite.co.uk <https://www.gowlandwhite.co.uk/>

