



7 Belmont Avenue , Stockton-On-Tees, TS19 0DX

AVAILABLE NOW - SORRY NO SMOKERS, PETS CONSIDERED

This STYLISH 2 BEDROOM SEMI DETACHED property really does have the WOW factor, and is of a standard that is rarely seen on the rental market. The property is situated within easy access of shopping facilities and amenities along with the University of North Tees Hospital being just a short drive away.

Accommodation is presented to a very high standard throughout and benefits entrance porch, open plan lounge, kitchen/diner with French doors leading to the rear garden. The kitchen is fitted with a fantastic range of base and wall units and includes integrated appliances.

Moving to the upper floor there are two bedrooms and a good size family bathroom. Externally there is a block paved front garden offering off road parking. Gated access at the side leads to the enclosed rear garden which is designed for low maintenance and includes a paved patio area.

£800

7 Belmont Avenue

, Stockton-On-Tees, TS19 0DX



- 2 BEDROOM SEMI DETACHED PROPERTY
- APPLIANCES INCLUDED
- MODERN BATHROOM
- STYLISH INTERIOR
- OFF ROAD PARKING
- GAS CENTRAL HEATING
- OPEN PLAN LOUNGE/KITCHEN
- LOW MAINTENANCE GARDEN

ENTRANCE PORCH

LOUNGE

15'1" x 11'1" (4.62 x 3.38)

KITCHEN/DINER

15'3" x 11'1" (4.65 x 3.40)

LANDING

BEDROOM ONE

13'10" x 11'8" (4.22 x 3.58)

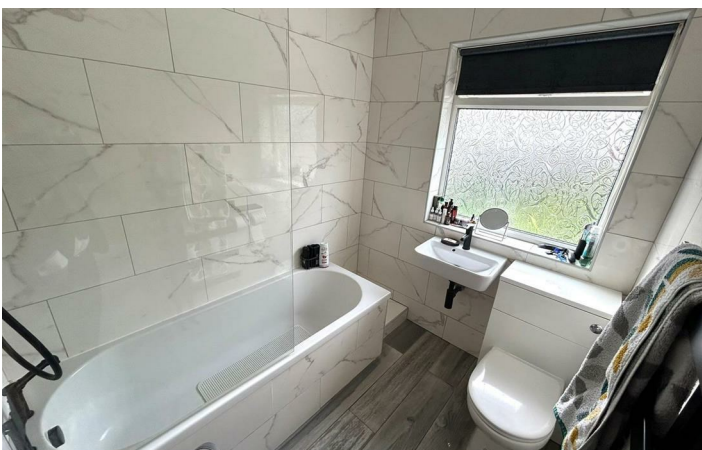
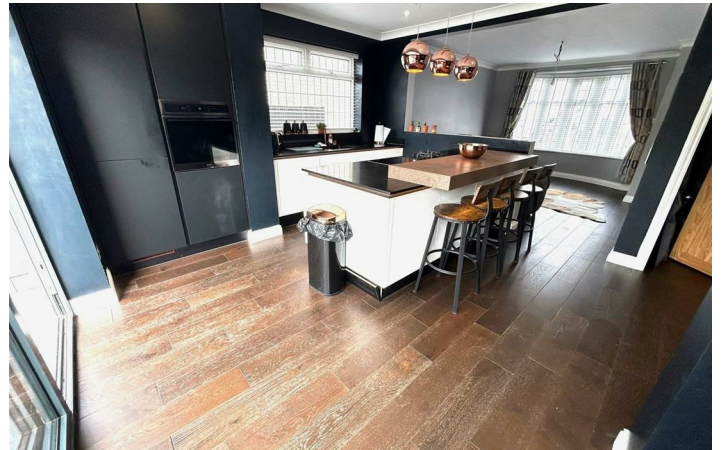
BEDROOM TWO

10'9" x 8'2" (3.30 x 2.51)

BATHROOM



Directions





Floor Plan

These particulars, whilst believed to be accurate are set out as a general outline only for guidance and do not constitute any part of an offer or contract. Intending purchasers should not rely on them as statements of representation of fact, but must satisfy themselves by inspection or otherwise as to their accuracy. No person in this firm's employment has the authority to make or give any representation or warranty in respect of the property.

101 High Street, Yarm, TS15 9BB
Tel: 01642 248248 Email: yarm@gowlandwhite.co.uk <https://www.gowlandwhite.co.uk/>

