



REAR PATIO & GARDEN



REAR ASPECT & GARDEN

**\*FIVE BEDROOMS, TWO BATHROOMS, TWO RECEPTION ROOMS\* \*VERSATILE ACCOMMODATION THROUGHOUT DUE TO GROUND FLOOR BEDROOMS\* \*LEVEL SOUTH FACING REAR GARDEN\***  
**\*GREAT POTENTIAL, OPPORTUNITY FOR UPDATING, SCOPE TO EXTEND TO THE REAR (STPP)\* \*DOUBLE GLAZED & GAS CENTRAL HEATING\* \*GREAT VIEWS & CONVENIENT LOCATION FOR TOWN & COUNTRYSIDE!\***  
**A LARGE DETACHED FIVE BEDROOM FAMILY HOME** with stunning views over Manor Park and the surrounding countryside. The house has flexible accommodation with three bedrooms on the Ground Floor with a Bathroom and two bedrooms on the First Floor with a Bathroom. There is a L-shaped Garage with vehicle access to the rear approached via a large driveway with ample parking and turn-around space. The plot covers approximately half an acre with a **SOUTH FACING** Rear Garden which includes an extensive level lawn and rear patio.  
**A UNIQUE FAMILY HOME. NO ONWARD HOUSE CHAIN!**

**Burntwood Lane, Caterham, Surrey CR3 6TB**  
**Asking Price £825,000 FREEHOLD**



**SITTING ROOM**

### DIRECTIONS

From the High Street in Caterham on the Hill proceed straight on into Townend, turn right into Burntwood Lane, at the traffic lights proceed straight over along Burntwood Lane, the property is about a quarter of a mile down the road on the right handside.

### LOCATION

The house is located in a highly desirable residential road within easy reach of local shops in Caterham on the Hill. Whyteleafe South Station is within easy walking distance of the house with services into London. There are also many fine schools for all age groups within the area of Caterham and Whyteleafe. The commuter by car also has the benefit of the M25 motorway which can be accessed at Godstone junction 6.

Caterham Valley has a more comprehensive selection of High Street shops, including a Waitrose and Morrisons Supermarket. Locally there is a Sports Centre within a quarter of a mile at De Stafford School in Burntwood Lane and a Golf Course in Chaldon with stunning views over greenbelt countryside. The area has many fine open spaces including Manor Park (opposite the house), Kenley Common and the North Downs.

**A GREAT LOCATION FOR FAMILY LIVING CLOSE TO THE TOWN AND COUNTRYSIDE.**

### ACCOMMODATION

#### GROUND FLOOR ACCOMMODATION

##### ENTRANCE HALLWAY

L-shaped Entrance Hall with a frosted window to the front and front door. Staircase to the first floor landing. Large built in cloaks / storage cupboard housing the electric fuse box and electric meter. Built in airing cupboard with the hot water tank and slatted shelving, telephone point and radiator.

**SITTING ROOM** 22' 6" x 14' 11" (6.86m x 4.55m) Max Large double glazed window to the rear with views onto the garden and beyond, coved ceiling, solid wooden fireplace, double radiator, door to the Dining Room.

**DINING ROOM** 12' 4" x 9' 5" (3.75m x 2.86m) Double glazed window to the rear, coved ceiling, door to the Kitchen and double radiator.

**KITCHEN** 11' 11" x 9' 5" (3.64m x 2.86m) Double glazed window and door to the side, range of wall and base units with matching worktops and tiled surrounds, single bowl stainless steel sink unit with a double drainer and cupboards under. Space for a cooker with electric point, space and plumbing for a washing machine, built in storage cupboard.

**BEDROOM FIVE / STUDY** 9' 5" x 6' 0" (2.87m x 1.82m) Double window window to the side, coved ceiling and radiator.

**BEDROOM ONE** 12' 9" x 11' 2" (3.89m x 3.41m) Max Double glazed window to the front, coved ceiling, built in double wardrobe, double radiator.

**BEDROOM THREE** 12' 9" x 8' 9" (3.89m x 2.66m) Double glazed window to the front, built in single wardrobe, double radiator.

**BATHROOM** 9' 5" x 6' 0" (2.87m x 1.82m) Double glazed frosted window to the side, white suite comprising of a panelled bath with separate taps, pedestal wash hand basin and a low flush WC. Coved ceiling with half tiled surrounds, radiator.

#### FIRST FLOOR ACCOMMODATION

##### LANDING

Coved ceiling, door to a large area of loft eaves storage.



**DINING ROOM**



**BEDROOM TWO** 9' 3" x 14' 5" (2.83m x 4.40m) Max  
Large double glazed window to the rear aspect with open views to the rear garden and countryside beyond, built in large double wardrobe, double radiator.

**BEDROOM FOUR** 13' 8" x 8' 8" (4.16m x 2.64m)  
Double glazed window to the front, coved ceiling and double radiator.

### **BATHROOM**

Double glazed window to the front, coloured suite comprising of a panelled bath with separate taps, wash hand basin and a low flush WC. Half tiled surrounds and double radiator.

### **OUTSIDE**

#### **FRONT GARDEN & DRIVEWAY**

The front garden has a raised herbaceous flowerbed with a high hedge to the front. There is a part brick walled and hedgerow surround. The driveway extends to the whole width of the property and offers off road parking for many vehicles. There is also a large double width Carport leading up to the Garage and front door.

**LARGE GARAGE** 22' 6" x 14' 11" (6.86m x 4.55m) max  
L-shaped Garage with and up and over door to the front and rear plus a window and door to the rear garden. The garage has power and light and offers ample space for storage and a workshop if required.

#### **REAR GARDEN & ADDITIONAL LAND**

The large level South Facing rear garden has an extensive level lawn area (former tennis court) with a path leading to the rear of the plot. There is also a large crazy paved patio to the rear of the property with side access. There are high hedges to both sides and the rear. The garden offers a high degree of seclusion from all sides. To the rear of the garden there is a detached building, ideal for Garden Storage approximately measuring 3.41m x 2.50 m (11'2" x 8'2").

A gate then provides access to an additional quarter acre plot of land with an old Stable Building (derelict).

**16/9/2024**



**SITTING ROOM**



**KITCHEN**



**KITCHEN**



**LANDING**

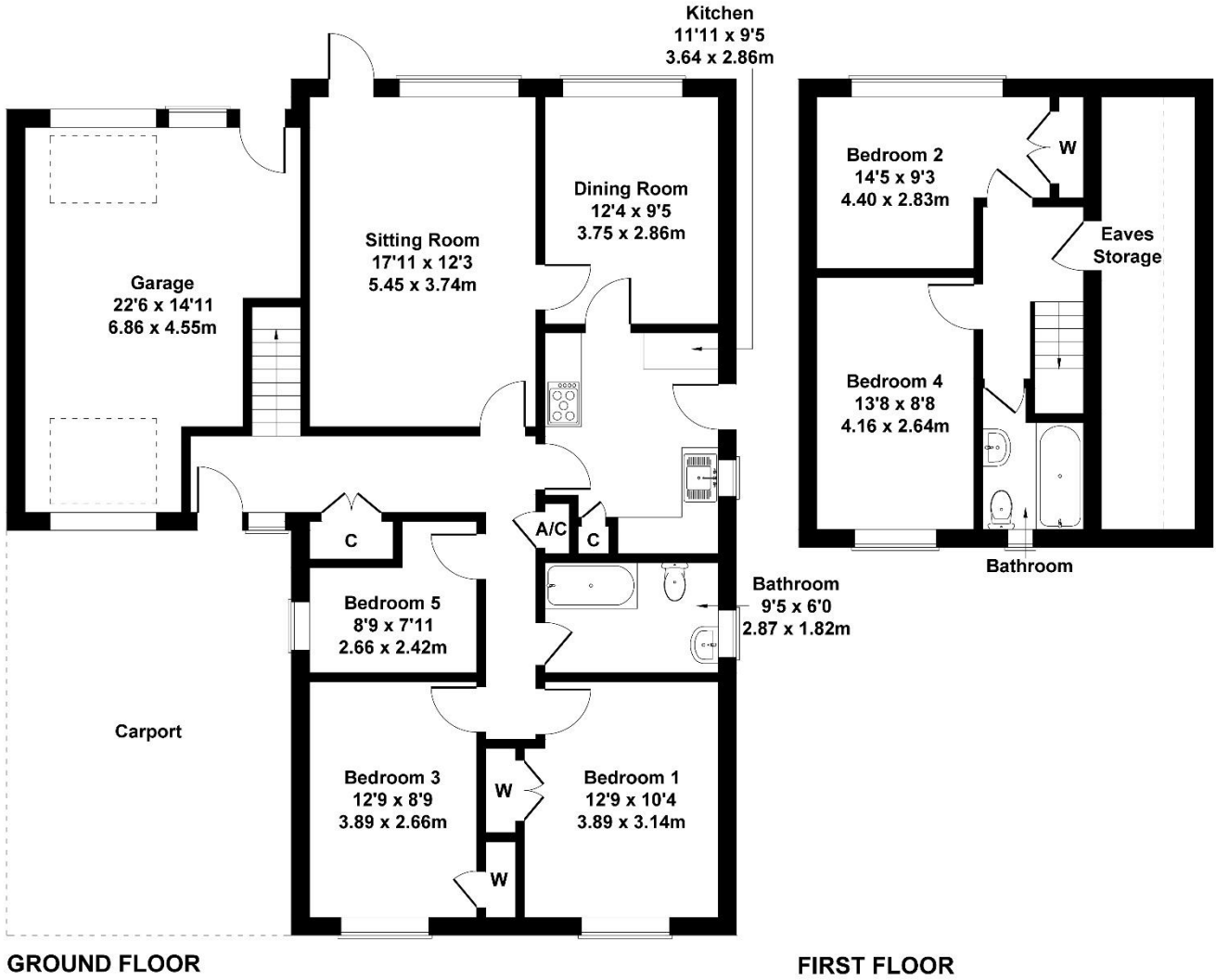


**BEDROOM ONE**

# FLOORPLAN

## Burntwood Lane

Approximate Gross Internal Area  
1647 sq ft - 153 sq m



Not to Scale. Produced by The Plan Portal 2023  
For Illustrative Purposes Only.



**BEDROOM TWO**



**BEDROOM FOUR**





**BEDROOM FIVE/STUDY**

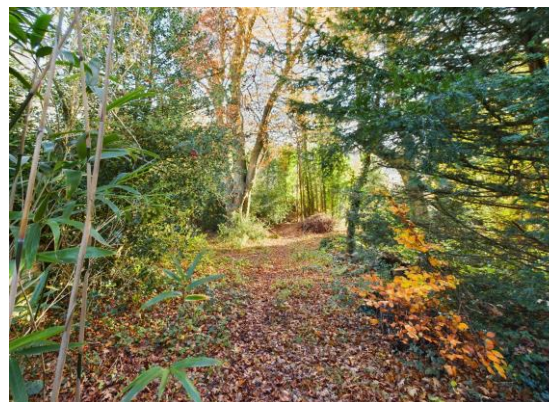
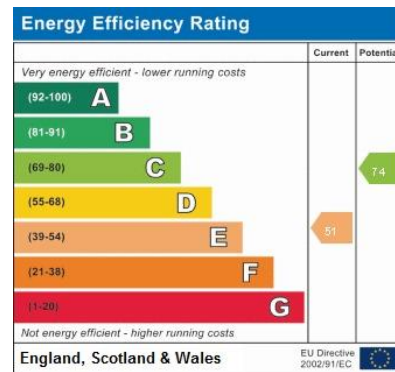


**VIEWES TO MANOR PARK**



**GROUND FLOOR BATHROOM**

**ENERGY PERFORMANCE CERTIFICATE (EPC)**



**DATA PROTECTION ACT 1998**

Please note that all personal information provided by customers wishing to receive information and/or services from us will be processed by P A Jones Property Solutions, for the purpose of providing services associated with the business of an estate agent and for the additional purposes set out in the privacy policy but specifically excluding mailings or promotions by a third party. If you do not wish your personal information to be used for any of these purposes, please notify your estate agent.

**MONEY LAUNDERING REGULATIONS 2003** : Intending purchasers will be asked to produce identification and proof of financial status when an offer is received. We would ask for your co-operation in order that there will be no delay in agreeing the sale.

**THE CONSUMER PROTECTION FROM UNFAIR TRADING REGULATIONS 2008**: It is a legal requirement that the property is presented accurately and in a way not to mis-lead a potential buyer in relation to the property particulars. The Agent has not tested any apparatus, equipment, fixtures and fittings or services and so cannot verify that they are in working order or fit for the purpose. A Buyer is advised to obtain verification from their Solicitor or Surveyor. References to the Tenure of a Property are based on information supplied by the Seller. The Agent has not had sight of the title documents. A Buyer is advised to obtain verification from their Solicitor. You are advised to check the availability of this property before travelling any distance to view. We have taken every precaution to ensure that these details are accurate and not misleading. If there is any point which is of particular importance to you, please contact us and we will provide any information you require. This is advisable, particularly if you intend to travel some distance to view the property. The mention of any appliances and services within these details does not imply that they are in full and efficient working order.

**PA. Jones Property Solutions, Residential Sales & Lettings**  
**77-79 High Street, Caterham, Surrey CR3 5UF**  
**Sales: 01883 348035 Lettings: 01883 343355 Email: [info@pajonespropsolutions.co.uk](mailto:info@pajonespropsolutions.co.uk)**  
**[www.pajonespropsolutions.co.uk](http://www.pajonespropsolutions.co.uk)**