



LIVING ROOM



KITCHEN/BREAKFAST ROOM

LARGE TWO DOUBLE BEDROOM PENTHOUSE APARTMENT

27' 0" x 12' 0" (8.22m x 3.65m) plus bay windows, DOUBLE ASPECT LIVING ROOM

FULLY FITTED KITCHEN/BREAKFAST ROOM 15' 6" x 12' 11" (4.73m x 3.94m) Max

UNDERFLOOR GAS FIRED CENTRAL HEATING, BUILT IN WARDROBES TO BOTH BEDROOMS* *MASTER BEDROOM WITH LARGE ENSUITE BATHROOM* *GREAT LOCATION FOR THE TOWN & COUNTRYSIDE

A TWO DOUBLE BEDROOM PENTHOUSE APARTMENT located in a secluded position within a quarter of a mile of Caterham Valley Town Centre and Railway Station. The Apartment floor area is **1249 Square Feet (116 Square metres)** and has a double aspect ***27' 0" x 12' 0" (8.22m x 3.65m)** Main Living Room and a large double aspect Kitchen/Breakfast Room. Both Bedrooms have large built-in wardrobes with the Master Bedroom benefitting from an En-suite Shower Room, there is also a large Family Bathroom.

A GREAT SIZE APARTMENT IN A CONVENIENT LOCATION!

Churchview Close, Caterham Valley, Surrey CR3 6EZ

'Offers in Excess of' £400,000 Leasehold with a Share of Freehold



LIVING ROOM

LIVING ROOM 27' 0" x 12' 0" (8.22m x 3.65m) plus bay windows

Double aspect room with double glazed windows to two sides, coved ceiling with inset spotlighting, TV point, heating thermostat.

KITCHEN/BREAKFAST ROOM 15' 6" x 12' 11" (4.73m x 3.94m) Max

Double glazed windows to the rear and side, range of wall and base units with matching granite worktops and tiled surrounds incorporating a one and a half sink unit with mixer taps and cupboards under. Coved ceiling with inset spotlighting, tiled flooring throughout. Built in four ring gas hob with an extractor fan above and an electric Double Oven and Grill, built in Dishwasher, Washer/Dryer and Fridge/Freezer. Wall mounted VIESMANN gas fired central heating boiler set within a wall unit, heating thermostat.

MASTER BEDROOM 17' 2" x 16' 8" (5.23m x 5.07m) L' Shaped and into bay window

Double glazed window to the rear, wall of mirror fronted sliding door wardrobes with hanging and shelf space, coved ceiling with inset spotlighting, heating thermostat, door to:

EN-SUITE BATHROOM 11' 9" x 9' 9" (3.57m x 2.96m) into bay

Double glazed bay window to the side, white suite comprising of a double size enclosed shower unit with a mixer shower attachment and sliding door access, large, panelled bath with a mixer tap shower attachment. vanity wash hand basin set within the bay and a low flush WC. Quality tiled surrounds and tiled flooring throughout. Extractor fan, light with shaver point and heated trowel rail.

BEDROOM TWO 13' 3" into bay x 10' 0" (4.04m into bay x 3.06m) To wardrobes

Double glazed window to the side, coved ceiling, built in mirror fronted wardrobes to one wall, heating thermostat.



LOUNGE AREA

DIRECTIONS

From Caterham Valley main roundabout, turn right into the Godstone Road, take the second left into Crescent Road and then first right into Churchview Close, take the first right turn into the parking area, the Apartment Block is straight ahead.

LOCATION

The property is in an ideal location being within a quarter of a mile of Caterham Town Centre and two miles of Junction 6 of the M25. Greenbelt Countryside with many fine walks including the North Downs is also nearby. The Town Centre has a Railway Station with services into Central London and a choice of Supermarkets and local shops, pubs and restaurants.

A GREAT LOCATION TO COMMUTE INTO LONDON AND FOR ACCESS TO THE TOWN CENTRE & COUNTRYSIDE!

ACCOMMODATION

COMMUNAL HALLWAY

There is a carpeted Communal Hallway with a staircase and Lift Service to all floors. There is a security intercom system to all of the Apartments.

ENTRANCE LOBBY

The Apartment front door is accessed via the Entrance Lobby as well as the Lift. There are also two maintenance cupboards within the Lobby.

ENTRANCE HALLWAY

A L 'shaped Entrance Hallway with coved ceiling and inset spotlights, access to loft storage via a retractable ladder, built in airing cupboard with a hot water tank and shelving plus two solar panel tanks with a control panel. Built in Cloaks Cupboard with an access door to a large eaves storage cupboard/area to one side of the Apartment.

BATHROOM 11' 7" x 9' 10" into bay (3.53m x 2.99m)
into bay

Double glazed frosted window to the side, large, panelled bath with a mixer tap shower attachment and a fitted shower screen, large pedestal wash hand basin and a low flush WC. Wall mounted chrome ladder style heated towel rail, tiled surrounds and tiled flooring throughout, coved ceiling with inset spotlighting.

OUTSIDE

COMMUNAL GARDENS

There is an area of Communal Gardens to one side and the rear of the block which are mainly laid to lawn.

RESIDENTS PARKING & COVERED BIN STORAGE

As you approach the block there are designated bays for off road parking, each flat has one allocated bay. There is also a covered Bin Storage within the parking area.

LEASEHOLD INFORMATION & COUNCIL TAX

LEASE TERM: 125 years from 1/1/2017 with a **SHARE OF FREEHOLD.**

MAINTENANCE: £1800.00 pa

GROUND RENT: NIL

COUNCIL TAX: BAND 'F' £3,386.92 pa (2024/2025)

Tandridge Council

19/4/2024

ENERGY PERFORMANCE CERTIFICATE (EPC)

Energy Efficiency Rating		Current	Potential
Very energy efficient - lower running costs			
(92-100) A			
(81-91) B		83	83
(69-80) C			
(55-68) D			
(39-54) E			
(21-38) F			
(1-20) G			
Not energy efficient - higher running costs			
England, Scotland & Wales		EU Directive 2002/91/EC	



KITCHEN/BREAKFAST ROOM



ENTRANCE HALLWAY



MASTER BEDROOM



MASTER BEDROOM

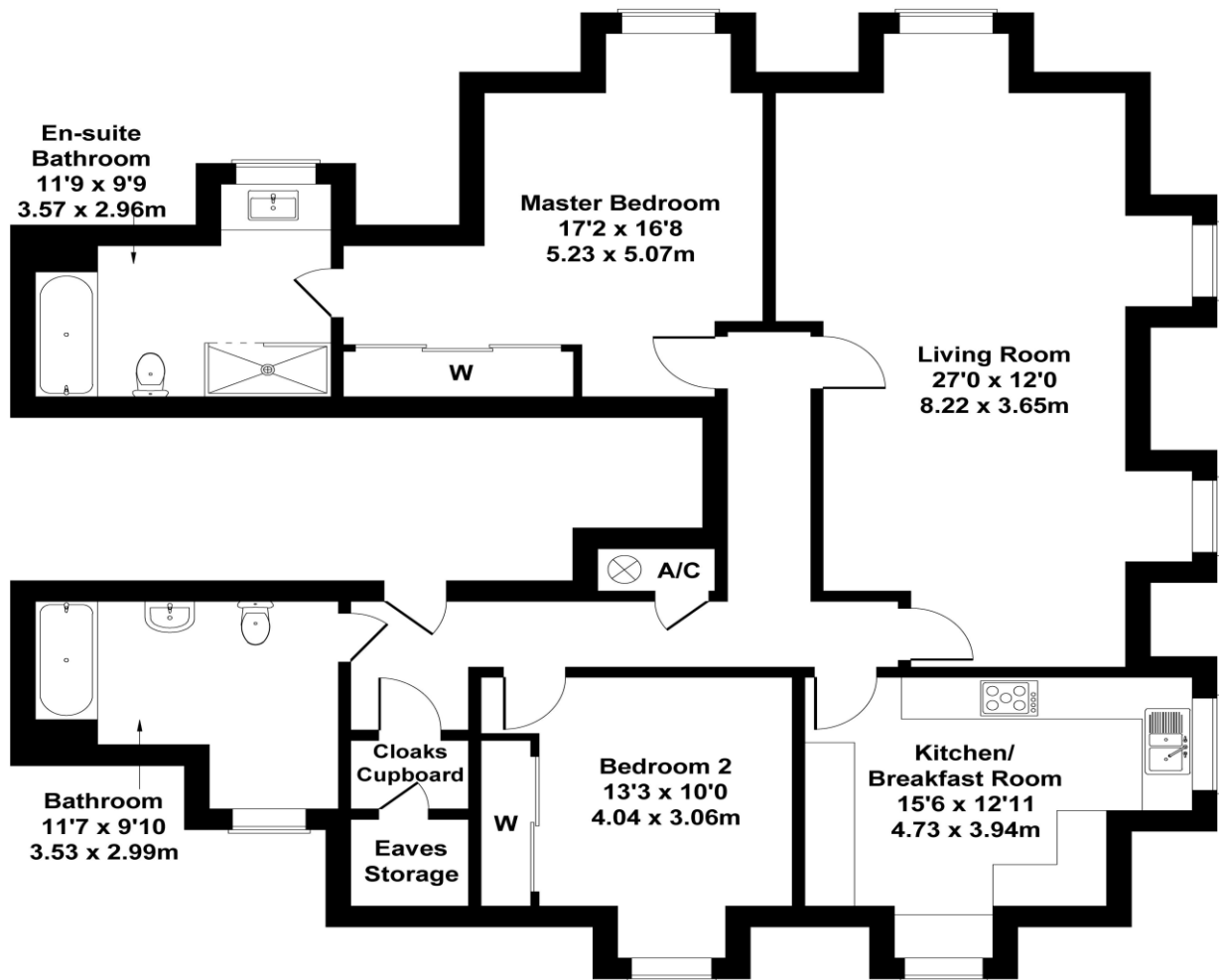


EN-SUITE BATHROOM

FLOORPLAN

Churchview Close

Approximate Gross Internal Area
1249 sq ft - 116 sq m
(Excluding Eaves Storage)



Not to Scale. Produced by The Plan Portal 2023
For Illustrative Purposes Only.





RESIDENTS PARKING AREA



COMMUNAL HALLWAY

DATA PROTECTION ACT 1998

Please note that all personal information provided by customers wishing to receive information and/or services from us will be processed by P A Jones Property Solutions, for the purpose of providing services associated with the business of an estate agent and for the additional purposes set out in the privacy policy but specifically excluding mailings or promotions by a third party. If you do not wish your personal information to be used for any of these purposes, please notify your estate agent.

MONEY LAUNDERING REGULATIONS 2003 : Intending purchasers will be asked to produce identification and proof of financial status when an offer is received. We would ask for your co-operation in order that there will be no delay in agreeing the sale.

THE CONSUMER PROTECTION FROM UNFAIR TRADING REGULATIONS 2008: It is a legal requirement that the property is presented accurately and in a way not to mis-lead a potential buyer in relation to the property particulars. The Agent has not tested any apparatus, equipment, fixtures and fittings or services and so cannot verify that they are in working order or fit for the purpose. A Buyer is advised to obtain verification from their Solicitor or Surveyor. References to the Tenure of a Property are based on information supplied by the Seller. The Agent has not had sight of the title documents. A Buyer is advised to obtain verification from their Solicitor. You are advised to check the availability of this property before travelling any distance to view. We have taken every precaution to ensure that these details are accurate and not misleading. If there is any point which is of particular importance to you, please contact us and we will provide any information you require. This is advisable, particularly if you intend to travel some distance to view the property. The mention of any appliances and services within these details does not imply that they are in full and efficient working order.

PA. Jones Property Solutions, Residential Sales & Lettings
77-79 High Street, Caterham, Surrey CR3 5UF
Sales: 01883 348035 Lettings: 01883 343355 Email: info@pajonespropsolutions.co.uk
www.pajonespropsolutions.co.uk