



Oakdale Drive,
Beeston, Nottingham
NG9 5LF

**£340,000 Freehold
Offers In The Region Of**



A newly refurbished three bedroom detached property with the advantage of no upward chain.

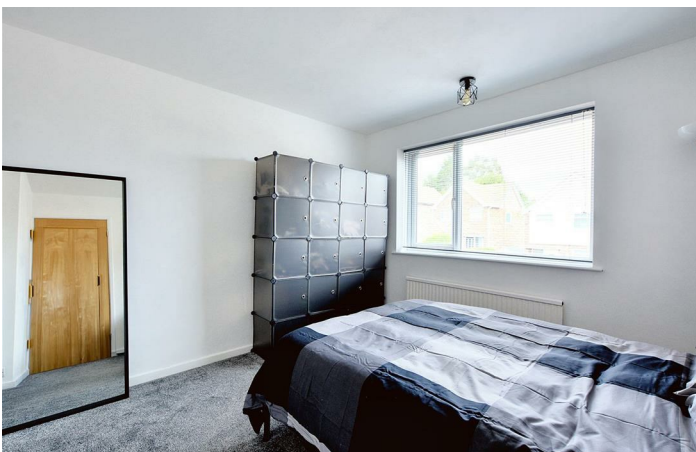
Situated in Chilwell, you are within close proximity to both Beeston Town Centre and Chilwell Retail parking, therefore giving you a wide variety of local amenities on your doorstep, this includes shops, restaurants, public houses, health care facilities, Attenborough Nature Reserve and transport links.

This spacious property would be an ideal purchase for a large variety of buyers including young families or anyone looking to relocate to this popular residential area.

In brief the internal accommodation comprises: entrance hall, Living dining room and Kitchen. Then rising to the first floor are three bedrooms and family bathroom.

Outside to the front of the property there is a block paved driveway with ample off street parking and gated side access to the rear garden. Here is a low maintenance pebbled garden with seating area.

Having been refurbished by the current homeowner, and with the advantage of gas central heating and recently fitted UPVC double glazed windows and doors throughout, this property is well worthy of an early internal viewing.



Entrance Hall

Composite door through to the entrance hall with laminate flooring, radiator and access to under stairs storage cupboard.

Living Dining Room

16'11" x 11'5" (5.16m x 3.48m)

A carpeted reception room, with radiator, gas fire and UPVC double glazed window to the front aspect.

Kitchen

12'6" x 10'6" (3.82m x 3.21m)

A range of wall and base units with work surfacing over and splashbacks, sink with drainer and mixer tap, inset electric hob and oven with extractor fan above. Space and fittings for freestanding appliances to include fridge freezer and washing machine. Access to the cupboard housing the boiler and UPVC double glazed door to the side passage.

First Floor Landing

A carpeted landing, with access to the airing cupboard and loft hatch.

Bedroom One

12'6" x 10'8" (3.82m x 3.26)

A carpeted bedroom, with radiator and UPVC double glazed window to the front aspect.

Bedroom Two

11'4" x 9'11" (3.47m x 3.04m)

A carpeted room, with radiator and UPVC double glazed window to the rear aspect.

Bedroom Three

8'3" x 6'7" (2.54m x 2.03m)

A carpeted room, with radiator and UPVC double glazed window to the rear aspect.

Bathroom

Wet room style bathroom, incorporating a three-piece suite comprising low flush WC, pedestal wash hand basin, wall mounted electric power shower, fully tiled walls, under floor heating, heated towel rail and UPVC double glazed window to the front aspect.

Outside

To the front is a block paved driveway with ample off-street parking for multiple cars and gated side access to the rear. Here is a low maintenance garden with a mixture of paved and pebbled areas for seating and fenced boundaries.

Material Information:

Freehold

Property Construction: Brick

Water Supply: Mains

Sewerage: Mains

Heating: Mains Gas

Solar Panels: No

Building Safety: No Obvious Risk

Restrictions: None

Rights and Easements: None

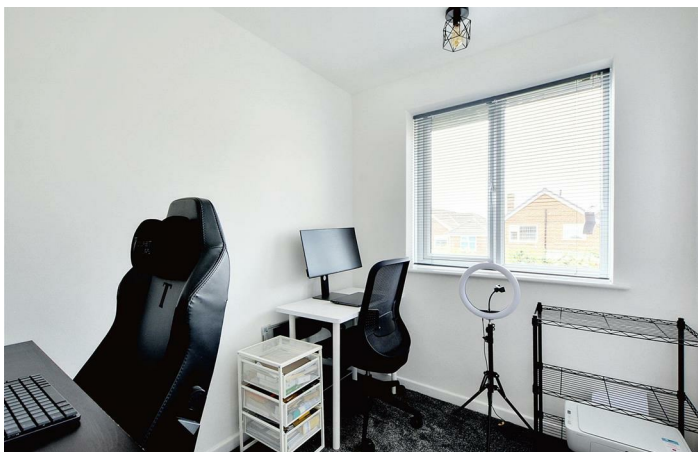
Planning Permissions/Building Regulations: None

Accessibility/Adaptions: None

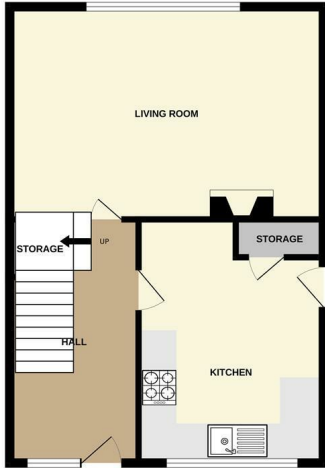
Has the Property Flooded?: No

Disclaimer:

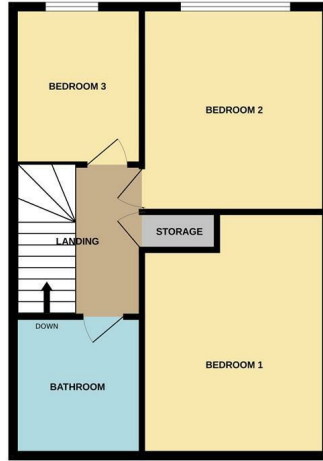
These details and Key facts are for guidance only and complete accuracy cannot be guaranteed. If there is any point, which is of particular importance, verification should be obtained. All measurements are approximate. No guarantee can be given with regard to planning permissions or fitness for purpose. No apparatus, equipment, fixture or fitting has been tested. Full material information is available in hard copy upon request.



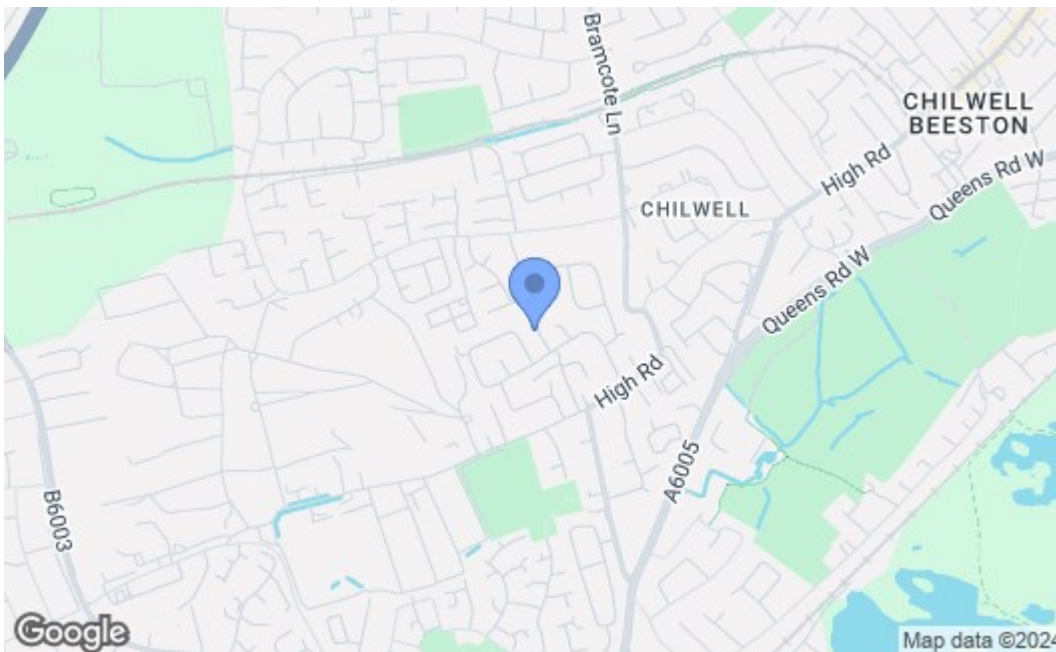
GROUND FLOOR



1ST FLOOR



Whilst every attempt has been made to ensure the accuracy of the floorplan contained here, measurements of doors, windows, rooms and any other items are approximate and no responsibility is taken for any error, omission or mis-statement. This plan is for illustrative purposes only and should be used as such by any prospective purchaser. The services, systems and appliances shown have not been tested and no guarantee as to their operability or efficiency can be given.
Made with Merapic 02024



Energy Efficiency Rating		Current	Potential
Very energy efficient - lower running costs			
(92 plus) A			83
(81-91) B			
(69-80) C			
(55-68) D		67	
(39-54) E			
(21-38) F			
(1-20) G			
Not energy efficient - higher running costs			
England & Wales		EU Directive 2002/91/EC	
Environmental Impact (CO ₂) Rating		Current	Potential
Very environmentally friendly - lower CO ₂ emissions			
(92 plus) A			
(81-91) B			
(69-80) C			
(55-68) D			
(39-54) E			
(21-38) F			
(1-20) G			
Not environmentally friendly - higher CO ₂ emissions			
England & Wales		EU Directive 2002/91/EC	

These details are for guidance only and complete accuracy cannot be guaranteed. If there is any point, which is of particular importance, verification should be obtained. All measurements are approximate. No guarantee can be given with regard to planning permissions or fitness for purpose. No apparatus, equipment, fixture or fitting has been tested.