



**The Severals, Newmarket, Suffolk CB8 7YN**

**Asking Price £299,950**



## **The Severals, Newmarket, Suffolk CB8 7YN**

Forming part of the conversion of this imposing and historically significant late Victorian property, this upper floor apartment enjoys superb views and a well-proportioned accommodation.

Secure gated entry, landscaped communal garden and onsite leisure facilities included.

This impressive apartment offers spacious accommodation throughout comprising two generous double bedrooms, one with Ensuite, family bathroom, a high quality fully fitted kitchen and a spacious reception room with large windows providing a generous amount of natural light.

External benefits include allocated off-road parking, further visitor bays, communal gardens and access to the swimming pool, gym and sauna.

### **Accommodation Details**

With communal entrance leading through to:

#### **Communal Entrance Hall**

Communal entrance hall with staircase rising to the second floor.

#### **Entrance Hall**

Front door leading in, video phone entry, wood effect flooring, Velux roof light, radiator, doors and access through to:

#### **Living Room 25'6" x 17'6" (7.79m x 5.35m)**

Triple aspect room with exposed timber beams, LED ceiling lights, storage cupboard, radiators, wood effect flooring.

#### **Kitchen/Dining Room 20'11" x 15'0" (6.38m x 4.58m)**

With vaulted ceiling and exposed timber beams the

kitchen is fitted with a matching range of eye level and base storage units with granite working top surfaces over, one and a half bowl sink with drainer and mixer tap over, built in oven, grill, microwave and separate four ring ceramic hob with stainless steel extractor hood above, integrated dishwasher, central island with integrated fridge and freezer, LED ceiling lights, radiator, dual aspect windows to front and side aspects, sliding door to utility.

#### **Utility**

With space and plumbing for washing machine, space for tumble dryer, pressurised hot water cylinder and gas fired boiler.

#### **Bedroom 1 18'2" x 13'1" (5.55m x 4.00m)**

Built in double door wardrobe, radiator, two windows to the rear aspect.

#### **Bedroom 2 13'1" x 9'11" (4.00m x 3.04)**

Built in double door wardrobe, radiator, window to the rear aspect, sliding doors to:

#### **Ensuite 13'1" x 4'2" (4.00m x 1.29m)**

Suite comprising concealed unit WC, hand wash basin and shower cubicle, shaver point, radiator, extractor fan.

#### **Bathroom 9'5" x 7'4" (2.88m x 2.24m)**

Suite comprising concealed unit WC, hand wash basin, panelled bath with shower attachment over, fully tiled shower cubicle, part tiled walls, chrome heated towel rail, extractor fan, obscured window to the front aspect.

#### **Outside**

Leading in to the property are automatic electric gates, a block paved driveway, parking for residents and visitors, single garage with remote controlled

electric door, connected to power and light and communal gardens that are laid mainly to lawn with shrub borders, gravel pathways, timber fencing and high level wall boundaries.

### **Leisure Facilities**

The property includes private use of onsite leisure facilities to include; gym, swimming pool, sauna and jacuzzi.

### **Agents Notes**

Service/Maintenance charge: £5919.34 per annum

Ground Rent: £200 per annum

Tenure: Share of freehold

Location - What 3 Words - [///inert.seating.quilting](#)

### **PROPERTY INFORMATION**

Maintenance fee - See Agents Notes

EPC - C

Tenure - Leasehold

Council Tax Band - F (West Suffolk)

Property Type - Top Floor Apartment

Property Construction – Standard

Number & Types of Room – Please refer to the floorplan

Square Meters - 125 SQM

Parking – Allocated Parking

Electric Supply - Mains

Water Supply – Mains

Sewerage - Mains

Heating sources - Electric Heating

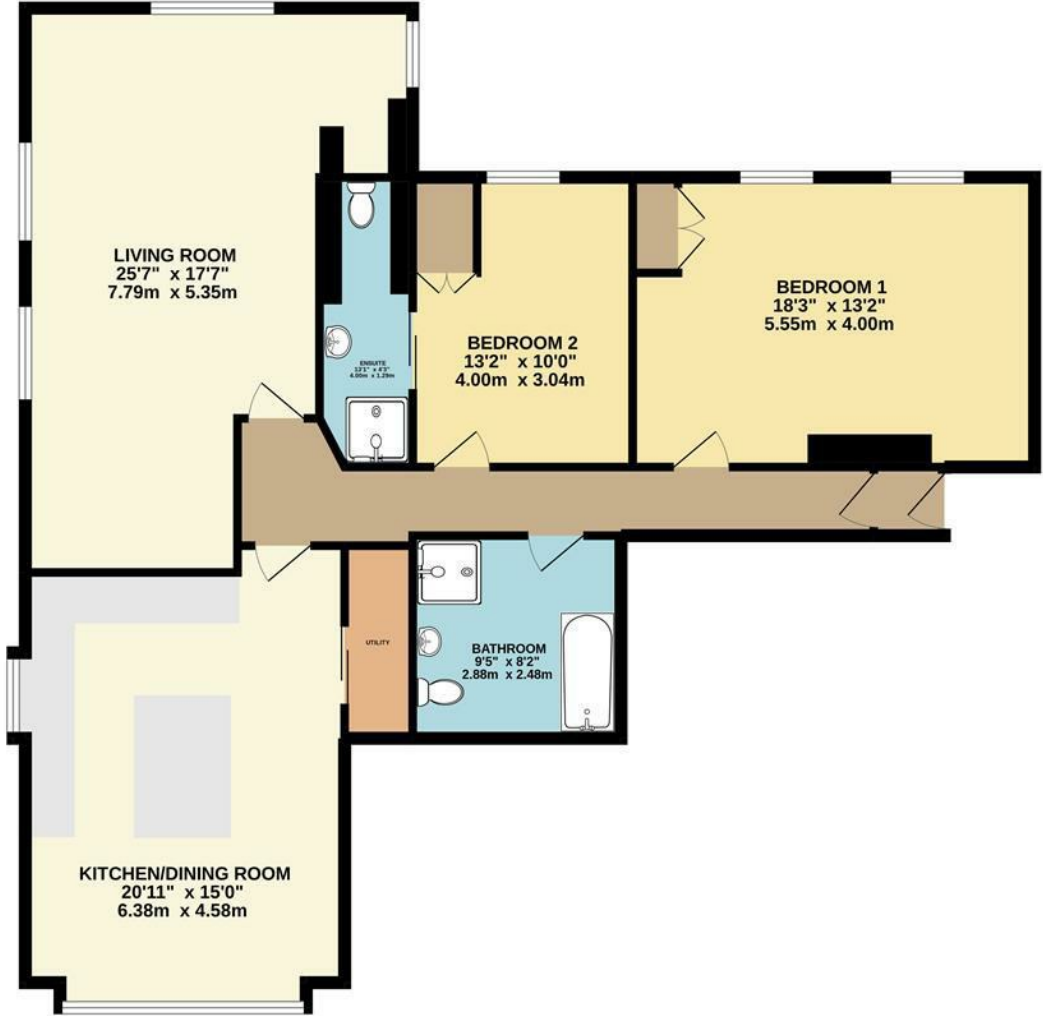
Broadband Connected - tbc

Broadband Type – Superfast available, 1000Mbps download, 100Mbps upload

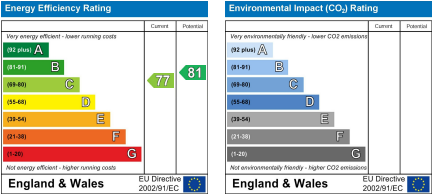
Mobile Signal/Coverage – Ofcom advise likely on all networks

Rights of Way, Easements, Covenants – None that the vendor is aware of

GROUND FLOOR  
1266 sq.ft. (117.6 sq.m.) approx.



TOTAL FLOOR AREA : 1266 sq.ft. (117.6 sq.m.) approx.  
Whilst every attempt has been made to ensure the accuracy of the floorplan contained here, measurements of doors, windows, rooms and any other items are approximate and no responsibility is taken for any error, omission or mis-statement. This plan is for illustrative purposes only and should be used as such by any prospective purchaser. The services, systems and appliances shown have not been tested and no guarantee as to their operability or efficiency can be given.  
Made with Metropix ©2022



This document and any marketing relating to the property has been prepared in good faith to give a fair overall view of the property and must not be relied upon as statements or representations of fact. It is suggested that undertake enquiries by inspections, survey or other investigation to ascertain the viability of any purchase. Any areas, measurements or distances referred to are given as a guide only and are not precise and no liability can be accepted for errors arising them therefrom. Photographs are not necessarily comprehensive nor current; no assumption should be made that any contents shown are included in the sale. Morris Armitage have not tested any services or equipment and nothing in these particulars should be deemed to be a statement that they are in good working order nor that the property is in good structural condition.







