



# HODSONS

ASKING PRICE

**£200,000**

**Fernleigh Court**

Wakefield, WF2 8SJ



## PROPERTY SUMMARY

A modern three-bedroom semi-detached home tucked away in a quiet cul-de-sac, offering a bright lounge, fitted kitchen, contemporary bathroom, off-road parking, and an enclosed rear garden with generous timber decking. Available with no onward chain, this is an ideal purchase for first-time buyers, families, or investors

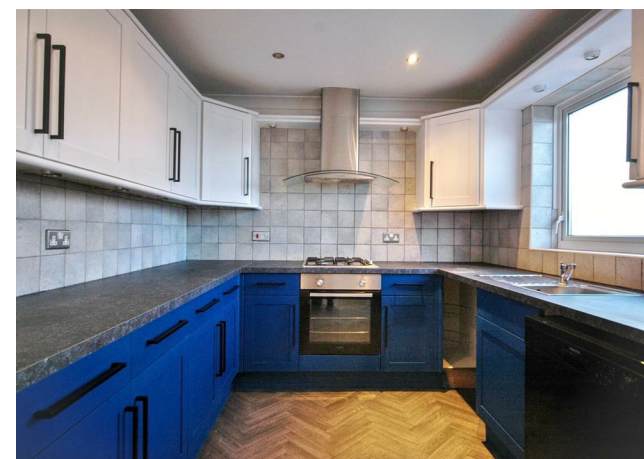
3



1



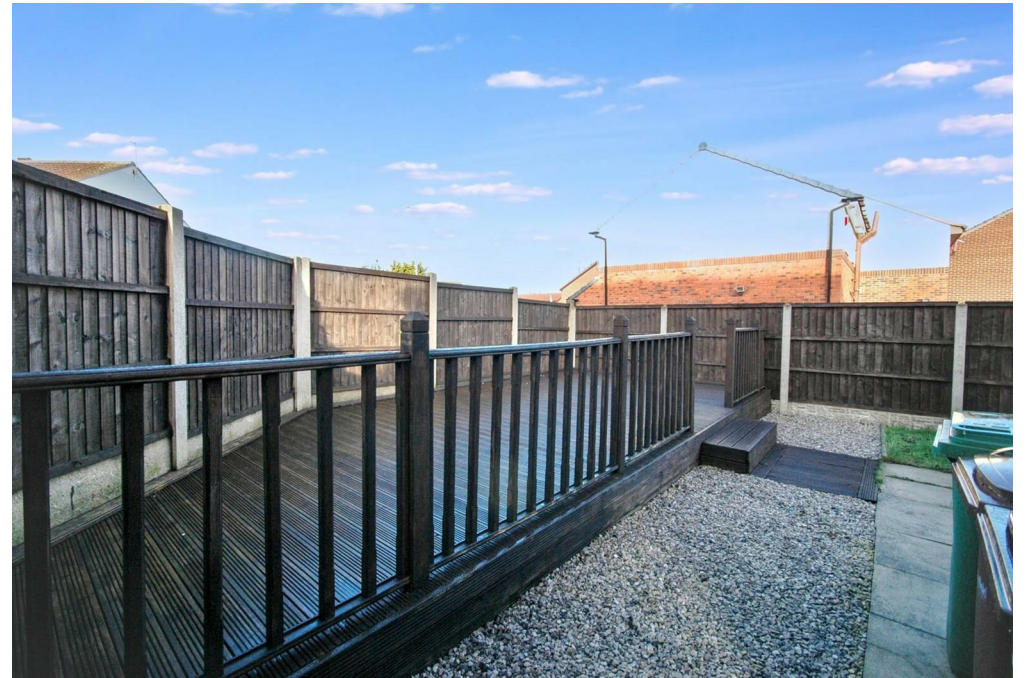
1





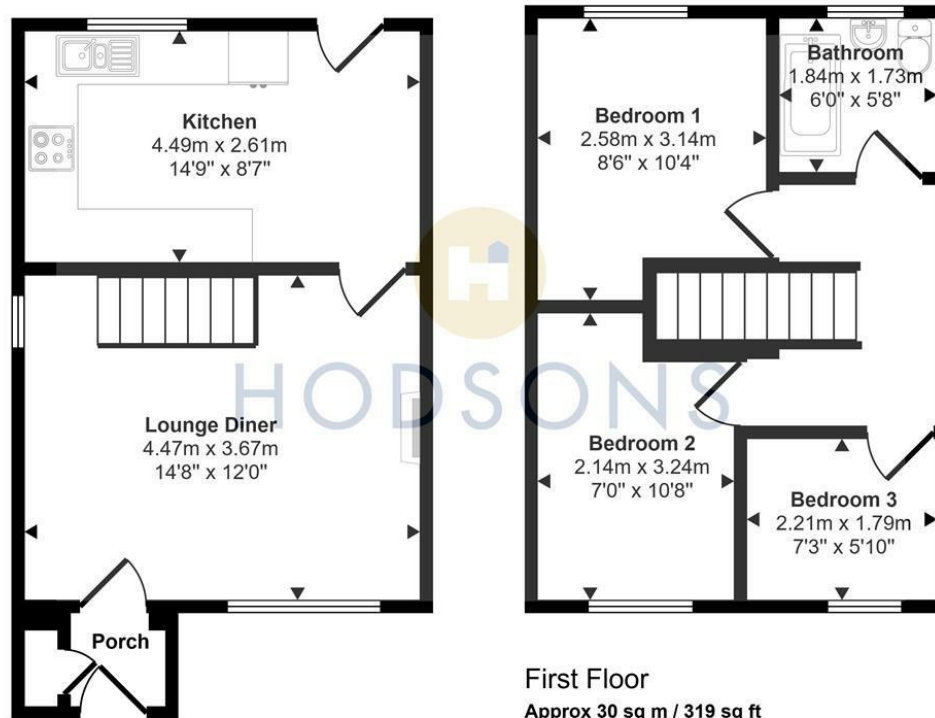








Approx Gross Internal Area  
60 sq m / 649 sq ft



**Ground Floor**  
Approx 31 sq m / 331 sq ft

This floorplan is only for illustrative purposes and is not to scale. Measurements of rooms, doors, windows, and any items are approximate and no responsibility is taken for any error, omission or mis-statement. Icons of items such as bathroom suites are representations only and may not look like the real items. Made with Made Snappy 360.

**LOCAL AUTHORITY**  
Wakefield

**TENURE**  
Freehold

**COUNCIL TAX BAND**  
B

**VIEWINGS**  
By prior appointment only

Energy Efficiency Rating		
	Current	Potential
Very energy efficient - lower running costs		
(92 plus) <b>A</b>		
(81-91) <b>B</b>		
(69-80) <b>C</b>		
(55-68) <b>D</b>		
(39-54) <b>E</b>		
(21-38) <b>F</b>		
(1-20) <b>G</b>		
Not energy efficient - higher running costs		
<b>England &amp; Wales</b>		EU Directive 2002/91/EC

Agents Note: Whilst every care has been taken to prepare these particulars, they are for guidance purposes only. All measurements are approximate and are for general guidance purposes only and whilst every care has been taken to ensure their accuracy, they should not be relied upon and potential buyers/tenants are advised to recheck the measurements



**OFFICE ADDRESS**  
37-39 George Street  
Wakefield  
West Yorkshire  
WF1 1LX

**OFFICE DETAILS**  
01924 200544  
wakefield@hodsonsproperty.co.uk  
www.hodsonsproperty.co.uk